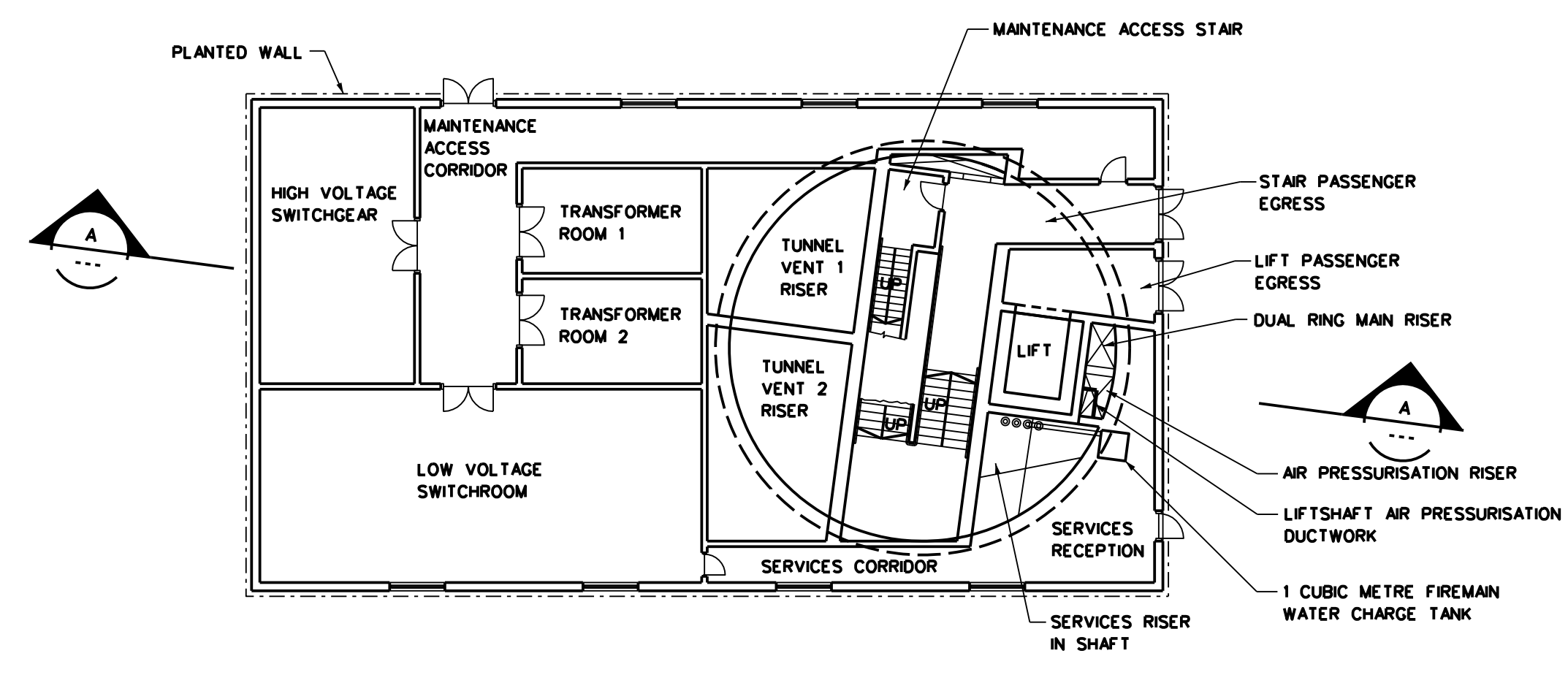
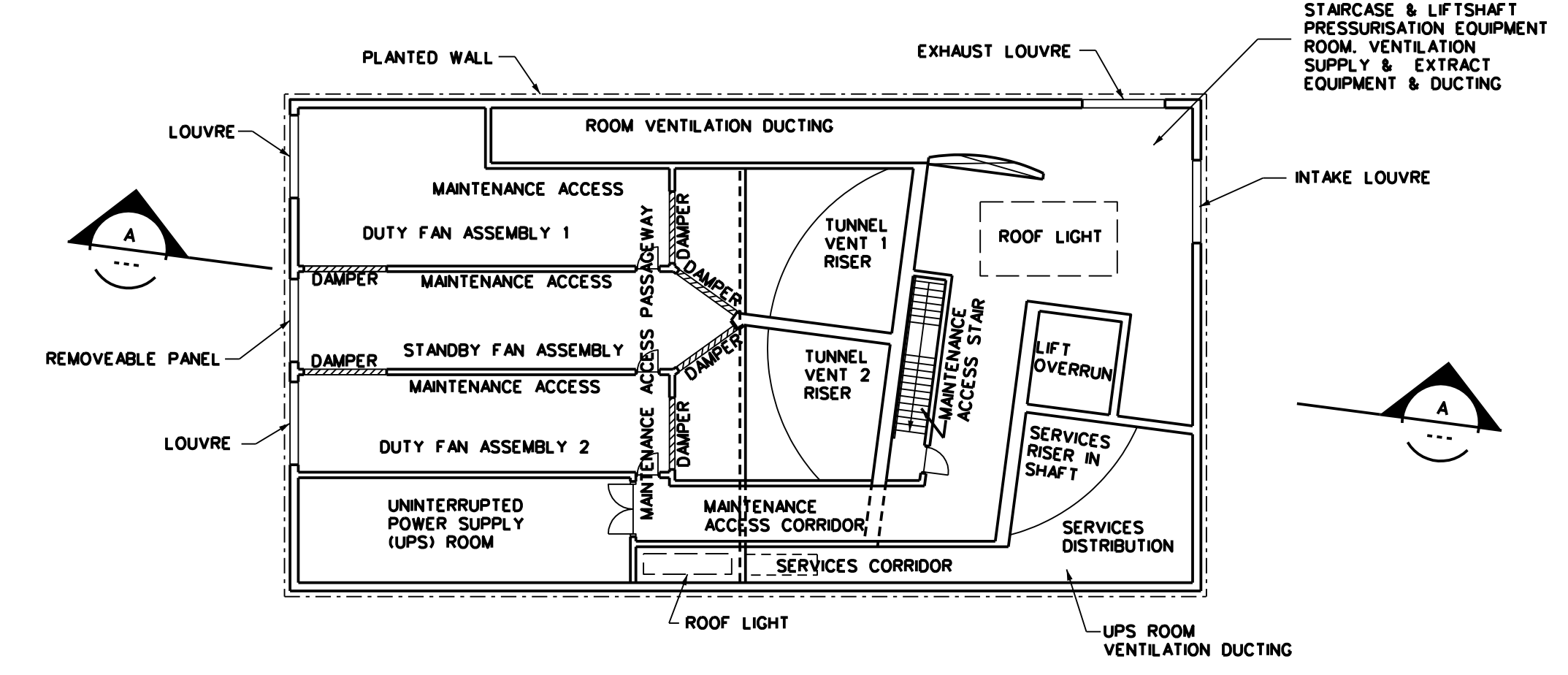


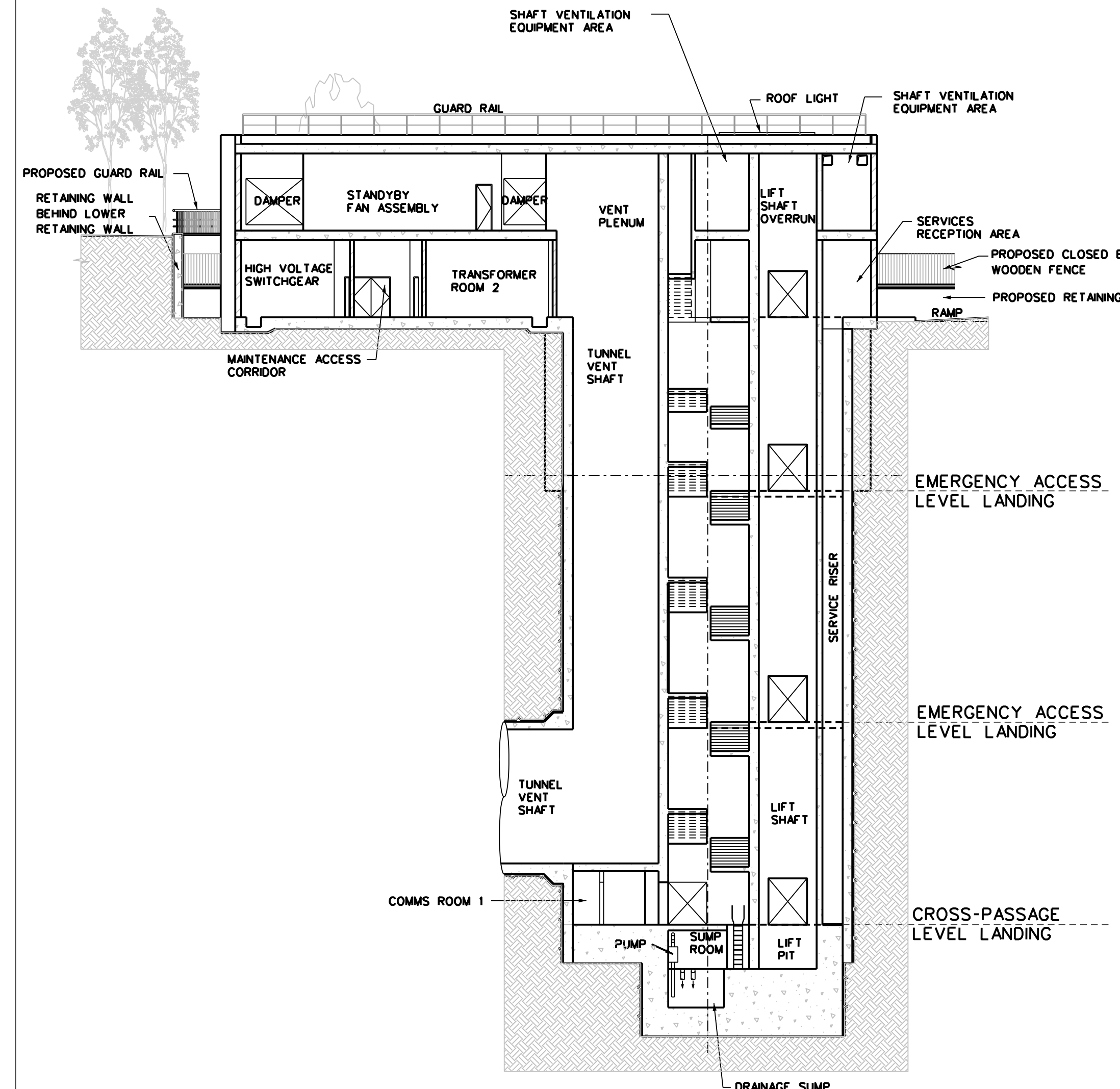
PLAN OF VENT TUNNEL AND ADITS
SCALE 1:200



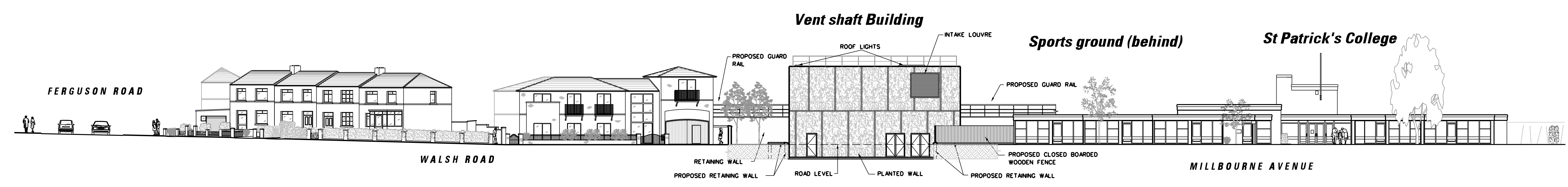
HEADHOUSE GROUND FLOOR LEVEL PLAN
SCALE 1:200



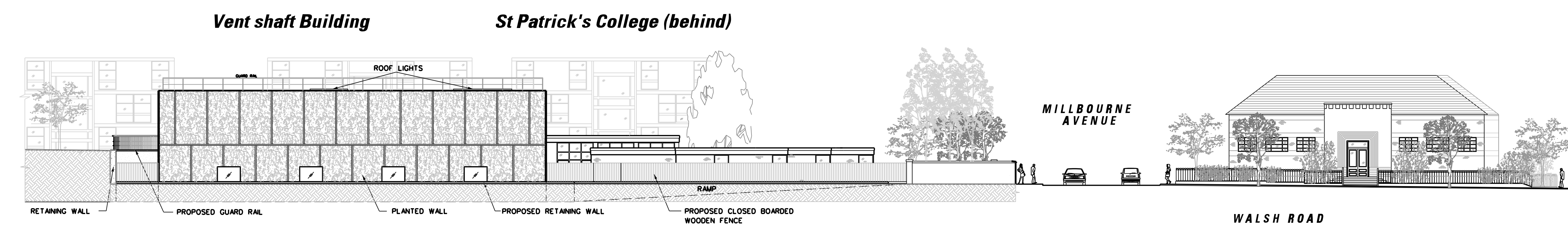
HEADHOUSE FIRST FLOOR LEVEL PLAN
SCALE 1:200



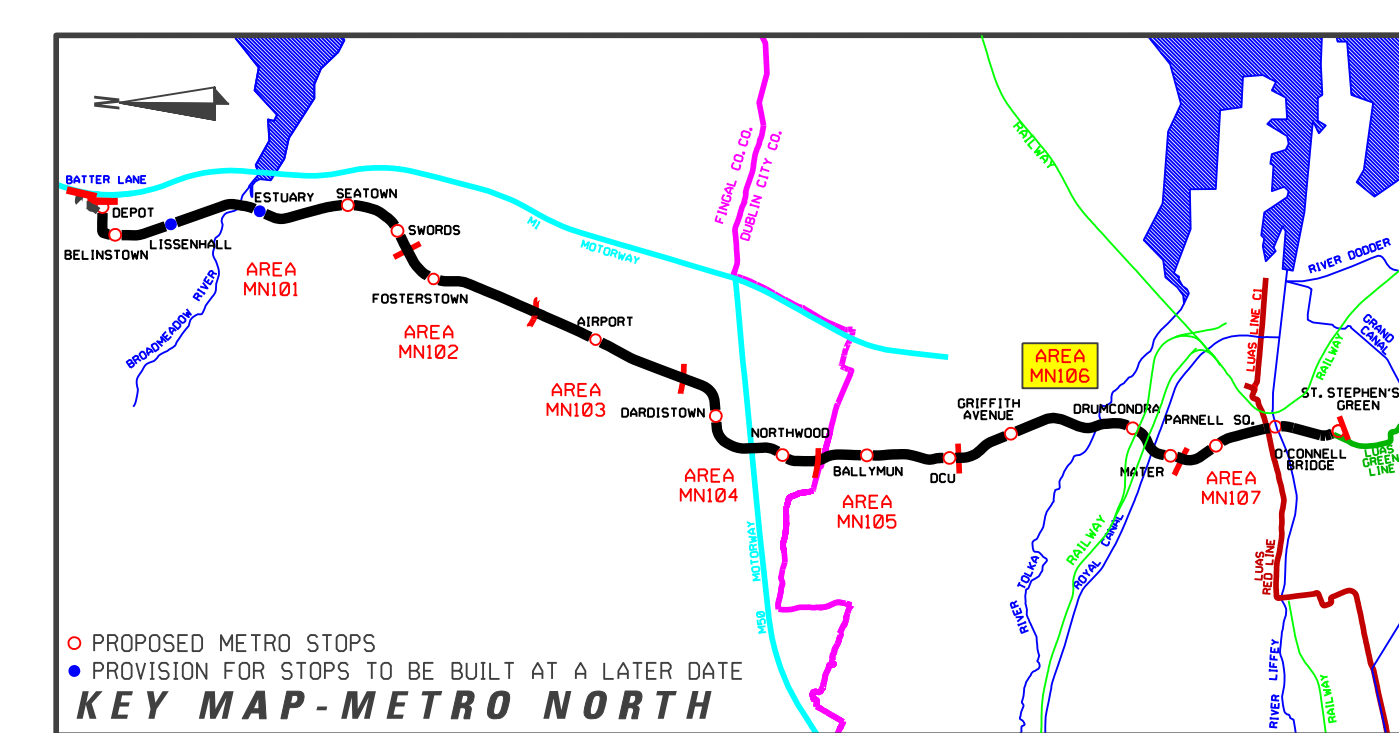
SECTION A-A
SCALE 1:200



SOUTH ELEVATION
SCALE 1:200



WEST ELEVATION
SCALE 1:200



PROVISION FOR STOPS TO BE BUILT AT A LATER DATE
KEY MAP - METRO NORTH

REVISION	DATE	MODIFICATION	STATUS	CHECKED/APPROVED

<p>RPA Railway Procurement Agency</p>	<p>Geography: Dublin City: Dublin Postcode: Dublin 6 Phone: +353 1 548 1400 Fax: +353 1 548 1401 www.rpa.ie</p>	<p>METRO</p>
	<p>TITLE: RAILWAY WORKS LINE MN - STRUCTURES ST. PATRICK'S EMERGENCY EXIT PLANS, SECTION & ELEVATIONS</p>	

PREPARED: RPA OFFICE	CHECKED: GEOFFREY FEATHERSTONE
SCALES: 1:200	APPROVED: ROBY O'DONOR
DATE: AUGUST 2008	

AREA NO: 106	PLAN NO: MN-VT 106 C-D2	SUBJECT: RAIL ORDER
------------------------	-----------------------------------	-------------------------------

REFERENCE RELATED DRAWINGS
FOR 1:500 PLAN DRAWING SEE RAIL ORDER PLAN No. MN-RO 106 C-D(L/MN/000/GA/106004/A)

AND ALSO SEE
ST. PATRICK'S EMERGENCY EXIT - STREET LEVEL PLAN
ST. PATRICK'S EMERGENCY EXIT - ELEVATIONS

MN-VT 106 C-D1(L/MN/000/VB/106001/A)
MN-VT 106 C-D3(L/MN/000/VB/106003/A)

Copyright Railway Procurement Agency
This drawing is confidential and the copyright in it is owned by the RPA. This drawing must not be either loaned, copied or otherwise reproduced or included in a report or used in any program or software without the prior permission of the RPA.
All U.S. data used for plans is generated from U.S. digitized maps and was printed under Ordnance Survey permit no. 05-8817

INTERNAL DOCUMENT NUMBER	STAGE	LINE	CONTRACT	ELEMENT	OPW NO	OPW REV
	L	MN	000	VB	106002	A