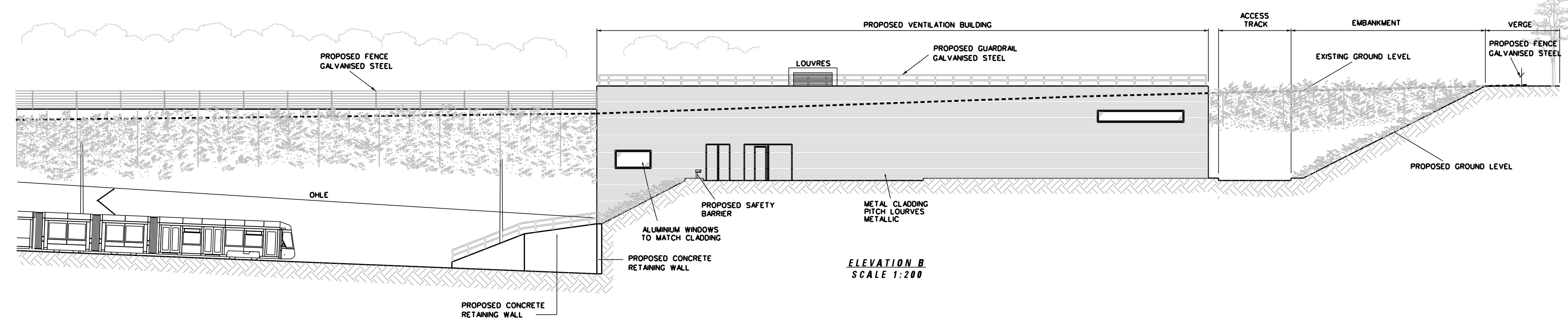
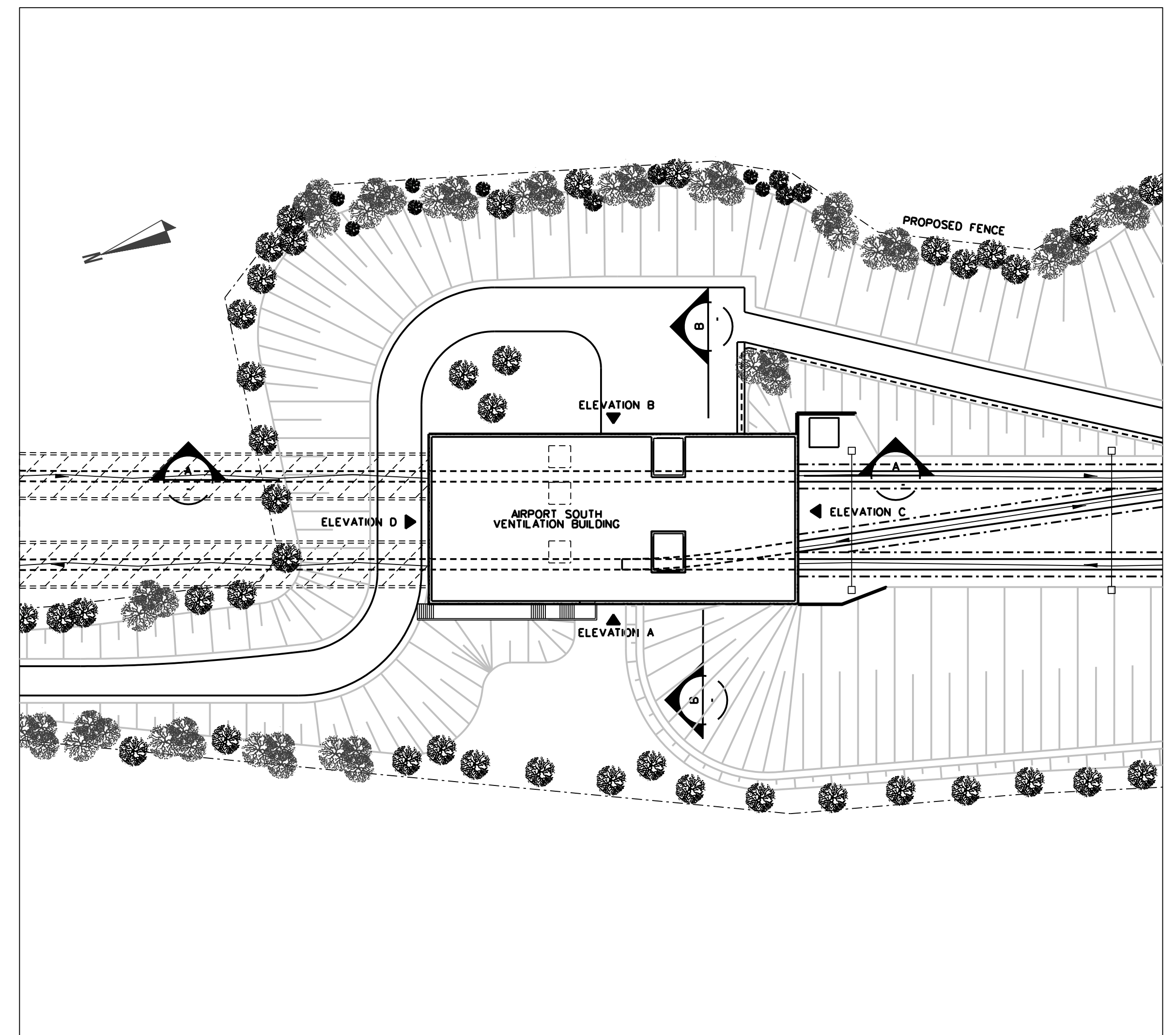


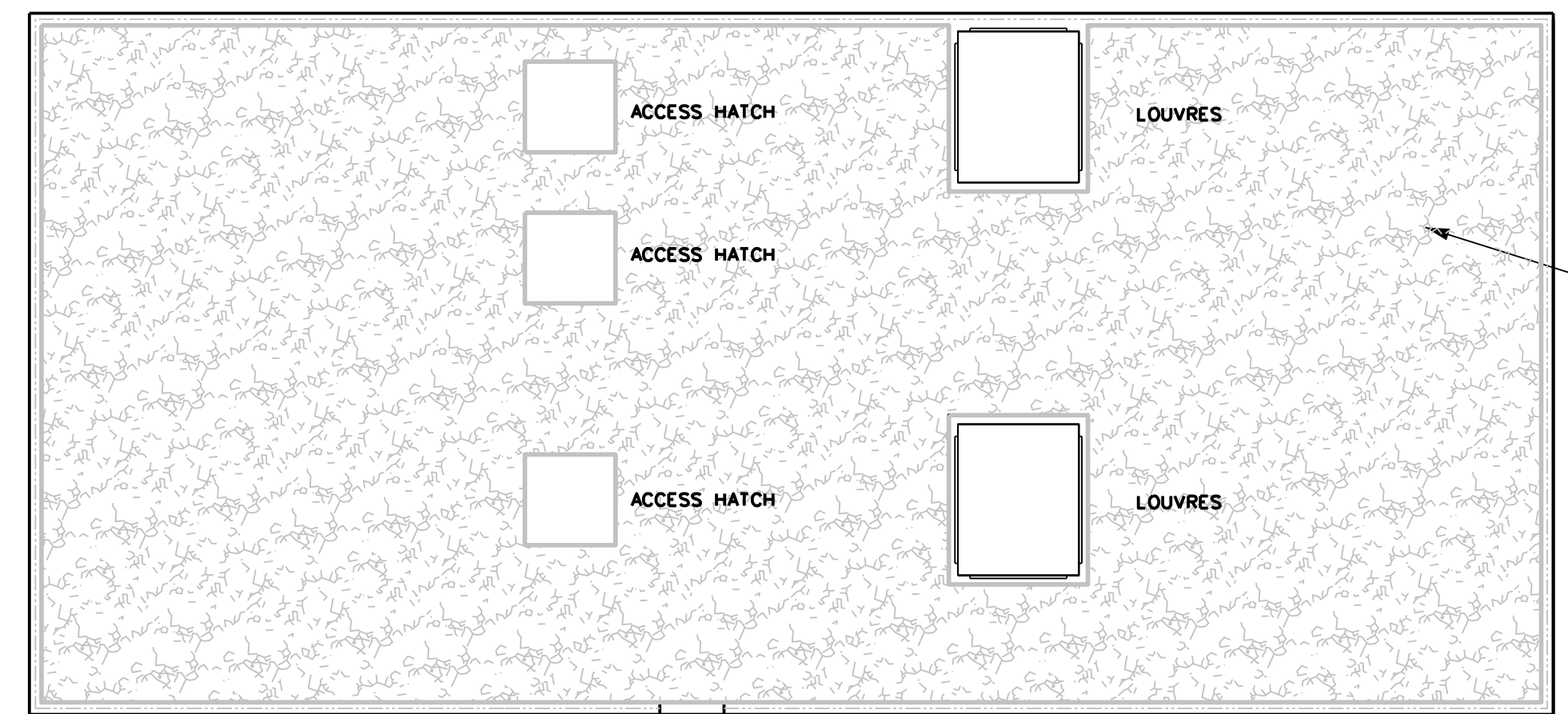
ELEVATION A
SCALE 1:200



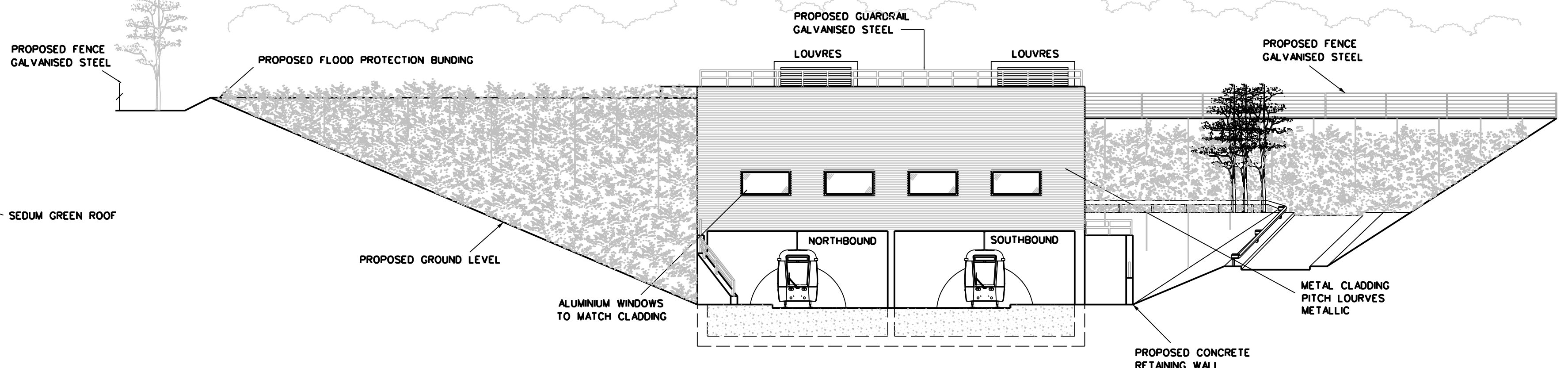
ELEVATION B
SCALE 1:200



KEY PLAN
SCALE 1:500

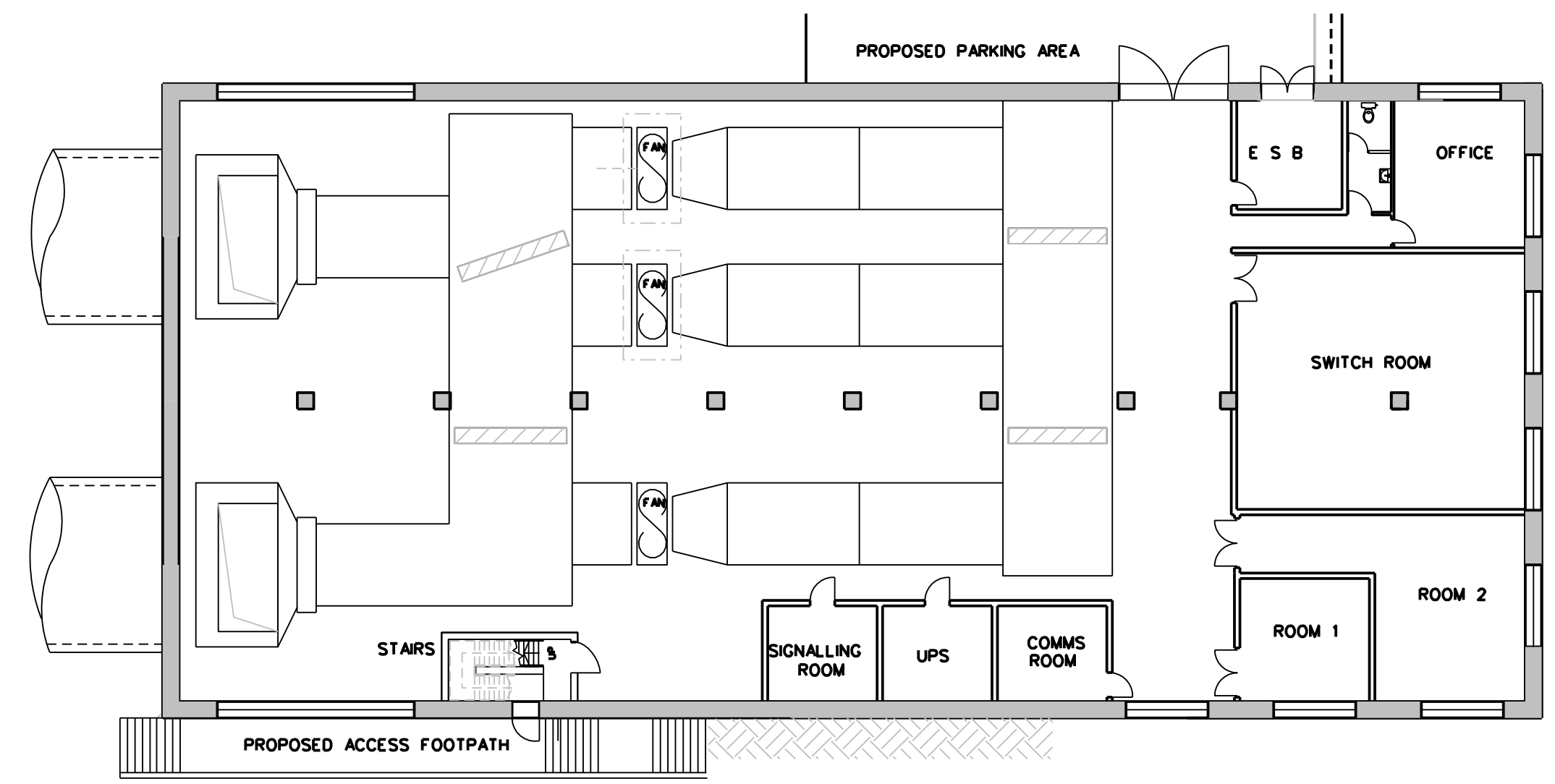


ROOF LEVEL PLAN
SCALE 1:200

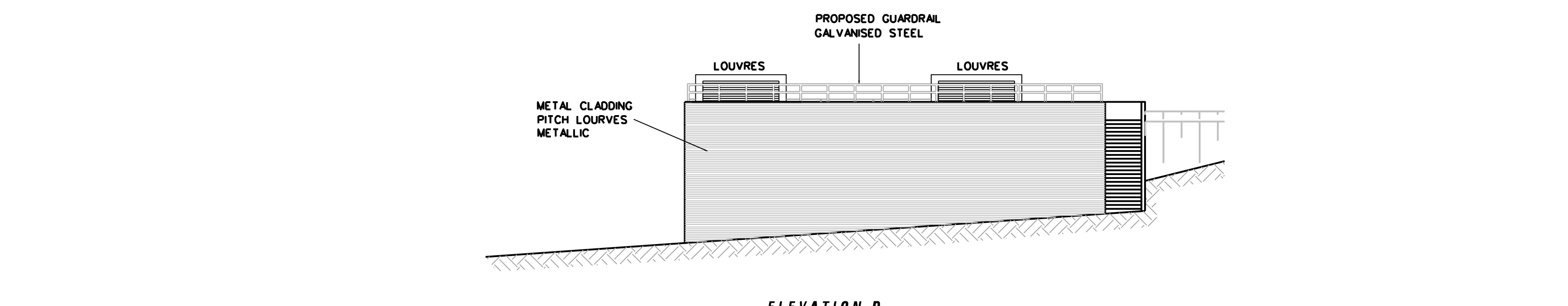


ELEVATION C
SCALE 1:200

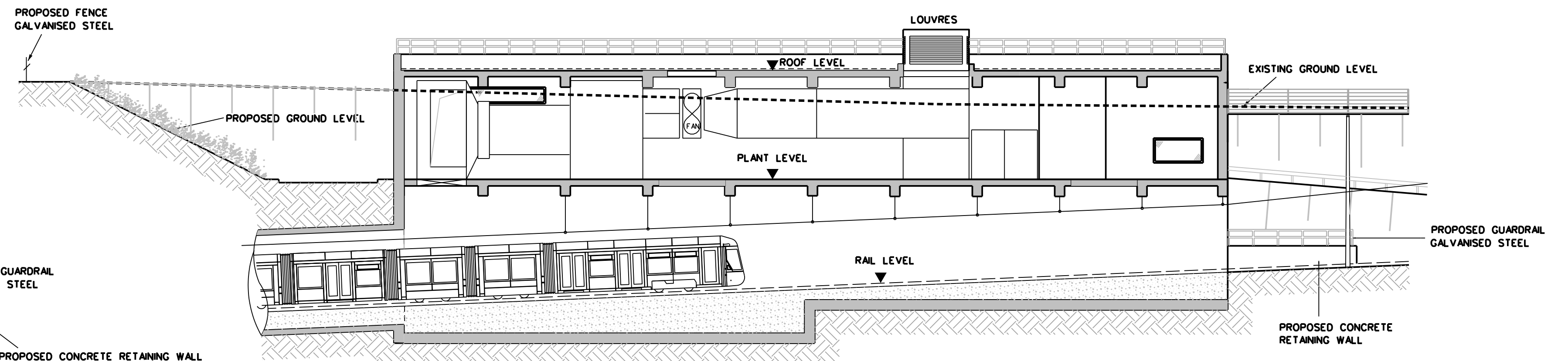
LEGEND			
	GRANITE		EXISTING TREE
	GRANITE SETTS		EXISTING TREE REMOVED
	DETERRENT PAVING		NEW TREE
	EXISTING KERB REMOVED		EDGE PLANTING
	EXISTING BUILDING LINE		Tree Pit
	STRUCTURES TO BE REMOVED		HEDGE
	SWEPT PATH EDGE		LOW LYING GROUND COVER
	POLE SUPPORT		GRASS AREA
	DIRECTION OF TRAFFIC FLOW		PLATFORM - GRANITE SLABS



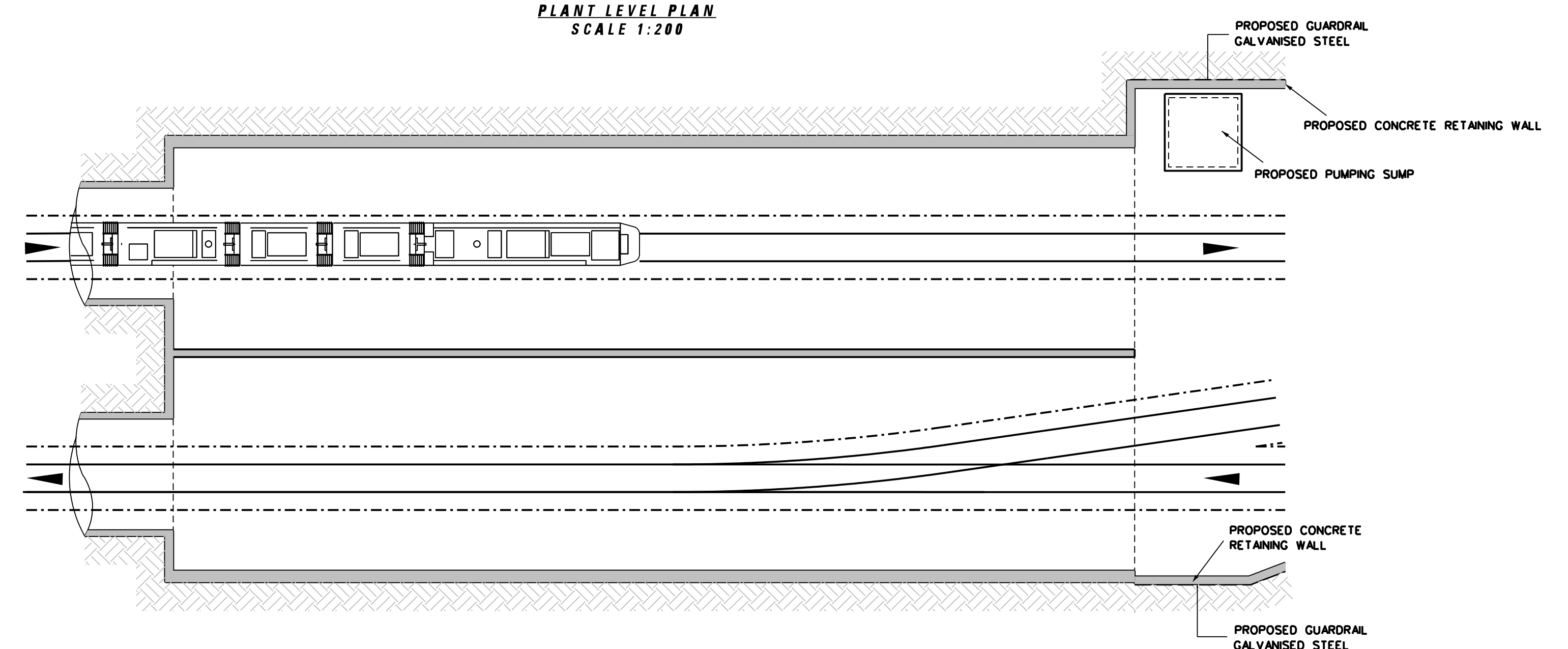
PLANT LEVEL PLAN
SCALE 1:200



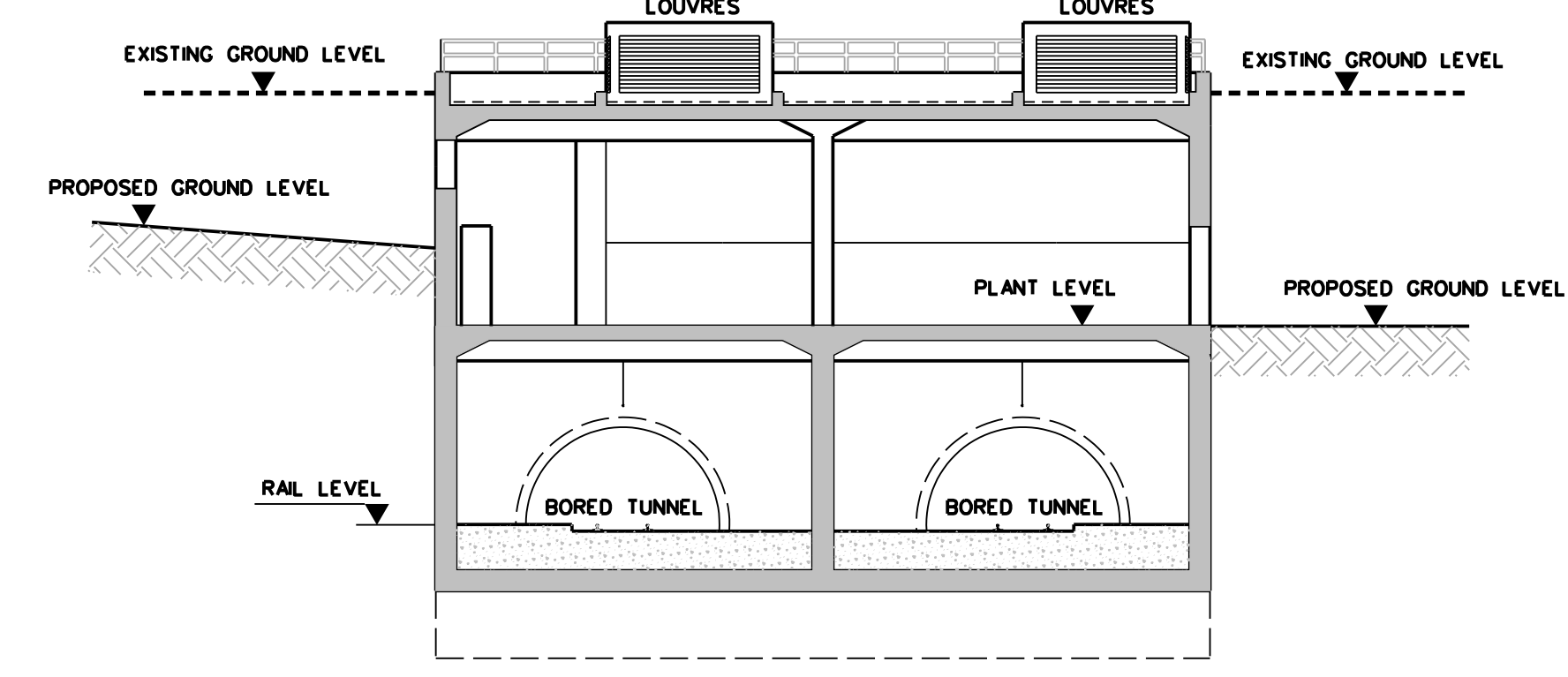
ELEVATION D
SCALE 1:200



SECTION A-A
SCALE 1:200

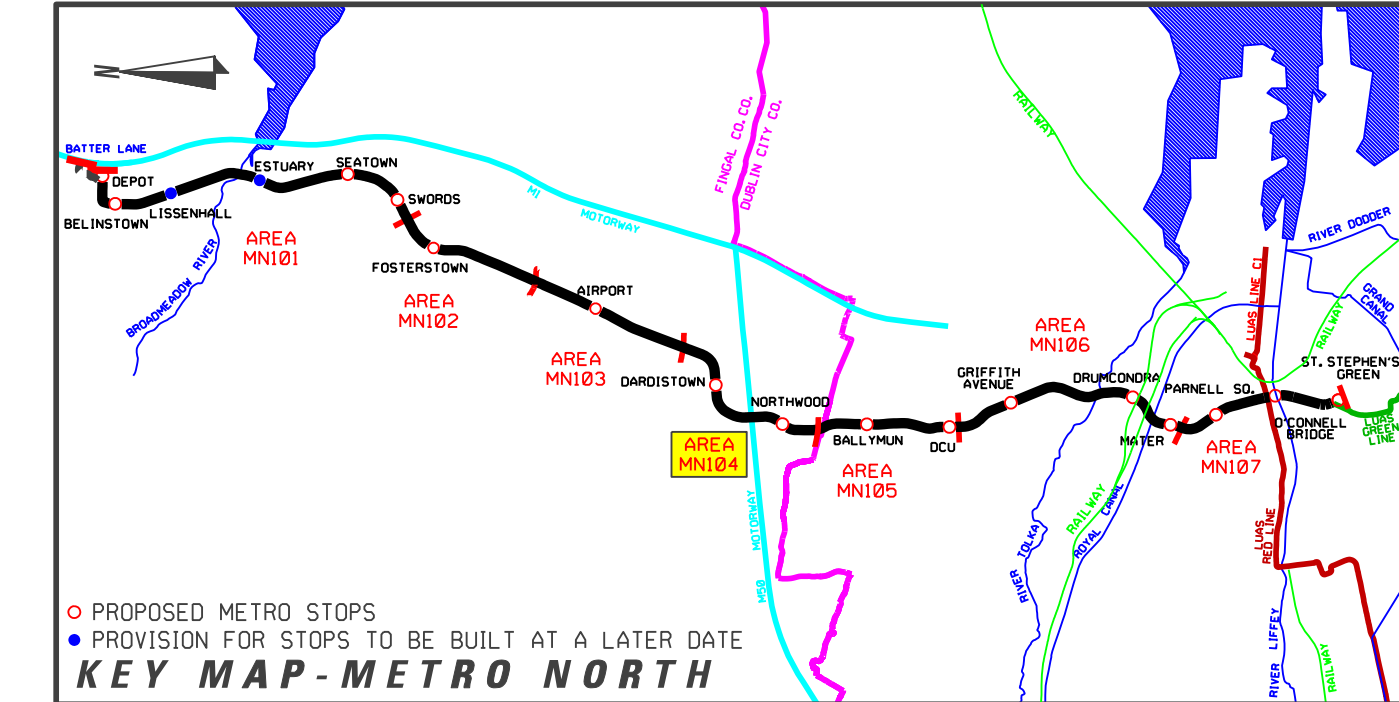


RAIL LEVEL PLAN
SCALE 1:200



SECTION B-B
SCALE 1:200

REFERENCE RELATED DRAWINGS
FOR 1:500 PLAN DRAWING SEE
RAIL ORDER PLAN No.
MN-RO 104 0-A
(L/MN/000/GA/104001/A)



REVISION	DATE	MODIFICATION	STATUS	CHECKED/APPROVED



TITLE:
**RAILWAY WORKS
LINE MN - STRUCTURES
AIRPORT SOUTH VENTILATION BUILDING**

PREPARED: RPA OFFICE	CHECKED: GEOFFREY FEATHERSTONE
SCALE: 1:500, 1:200	APPROVED: ROBY O'CONNOR
DATE: AUGUST 2008	

AREA NO: 104	PLAN NO: MN-VT 104 0-A	SUBJECT: RAIL ORDER
------------------------	----------------------------------	-------------------------------

Copyright Railway Procurement Agency
This drawing is confidential and the copyright is reserved by the RPA. This drawing must not be either loaned,
copied or otherwise reproduced in whole or in part or used for any purpose without the prior permission of the RPA.
All U.S. data used for plans is generated from U.S. digital maps and are printed under Ordnance Survey permit no. 05-8817

INTERNAL DOCUMENT NUMBER	STAGE	LINE	CONTRACT	ELEMENT	DPW NO	DPW REV
	L	MN	000	VB	104001	A