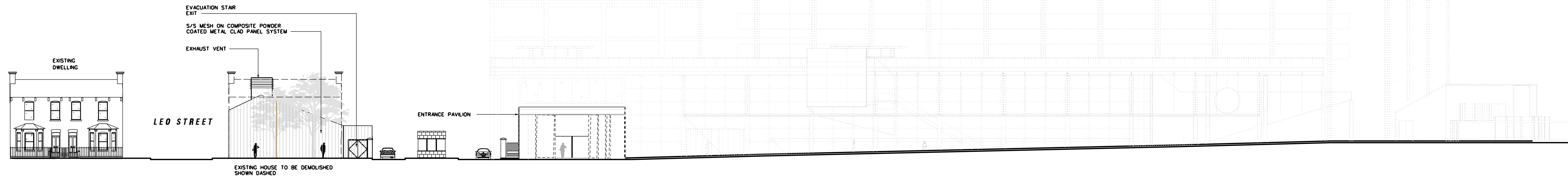
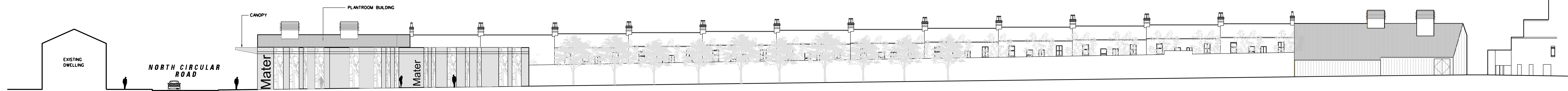


PROPOSED NEW MATER HOSPITAL

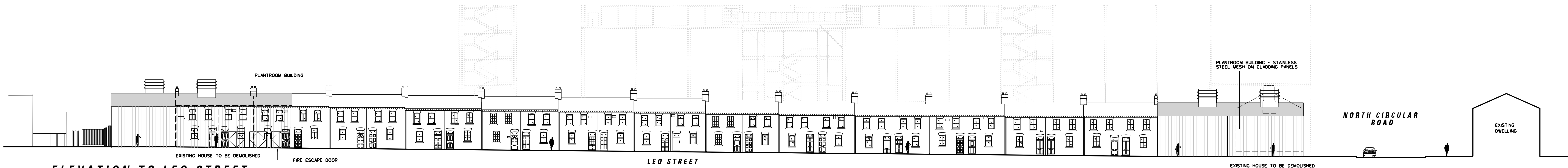


ELEVATION TO NORTH CIRCULAR ROAD
SCALE 1:200



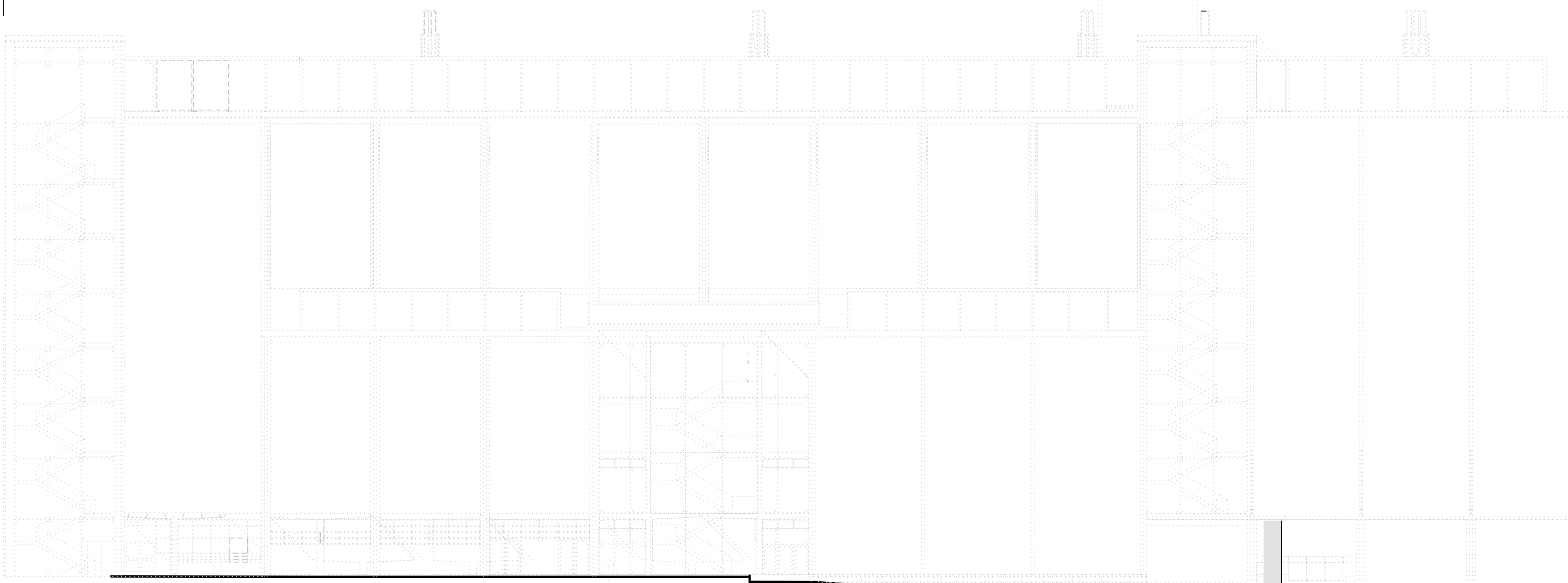
WEST ELEVATION OF ENTRANCE PAVILION
SCALE 1:200

PROPOSED NEW ADULT HOSPITAL
FOR OVERALL BUILDING HEIGHT REFER TO EAST ELEVATION OF ENTRANCE PAVILION BELOW



ELEVATION TO LEO STREET
SCALE 1:200

PROPOSED NEW MATER ADULT HOSPITAL



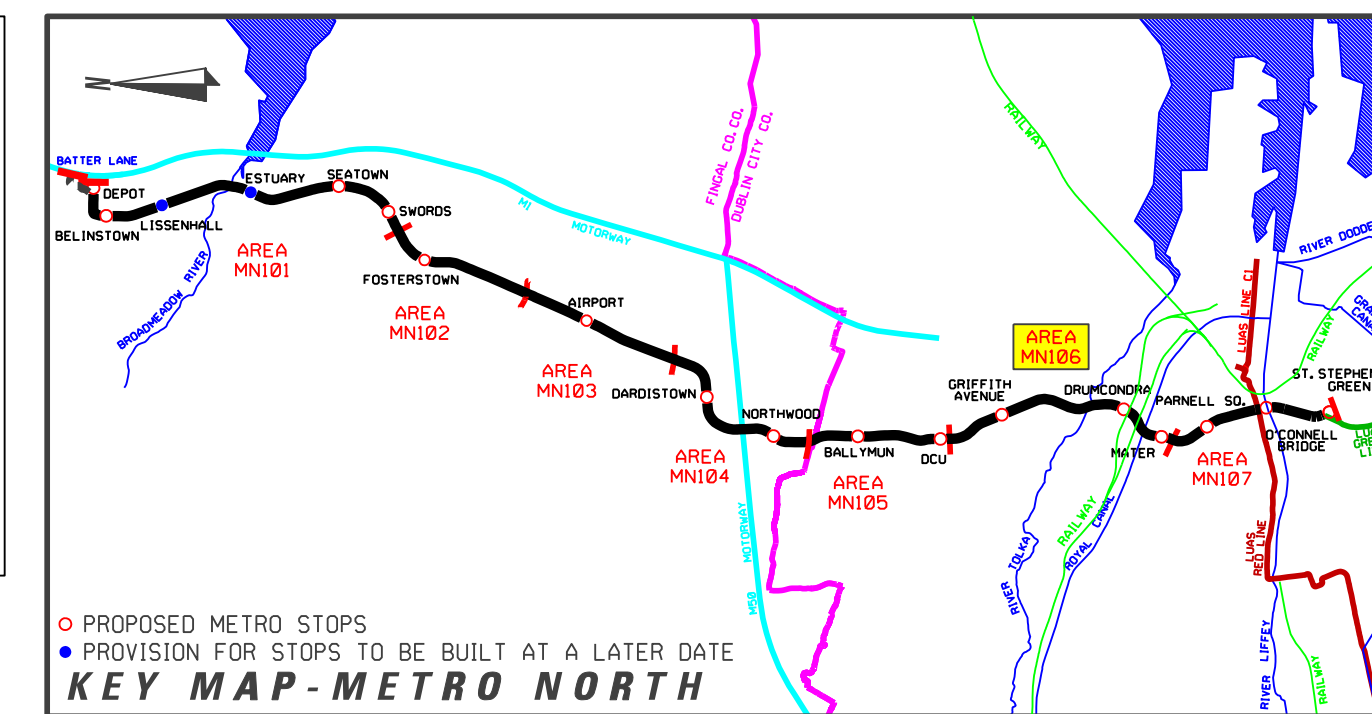
EAST ELEVATION OF ENTRANCE PAVILION
SCALE 1:200

REFERENCE RELATED DRAWINGS

FOR 1:500 PLAN DRAWING SEE RAIL ORDER PLAN No.
MN-RO 106 G-0(L/MN/000/GA/106008/A)

AND ALSO SEE

- MATER STOP - STREET LEVEL PLAN MN-ST 106 G-0(L/MN/000/TO/106017/A)
- MATER STOP - CONCOURSE PLAN MN-ST 106 G-02(L/MN/000/TO/106018/A)
- MATER STOP - MEZZANINE & PLATFORM PLANS MN-ST 106 G-03(L/MN/000/TO/106019/A)
- MATER STOP - SECTIONS MN-ST 106 G-04(L/MN/000/TO/106020/A)



PROPOSED METRO STOPS
PROVISION FOR STOPS TO BE BUILT AT A LATER DATE
KEY MAP - METRO NORTH

REVISION	DATE	MODIFICATION	STATUS	CHECKED/APPROVED



TITLE
RAILWAY WORKS
LINE MN - STRUCTURES
MATER STOP
ELEVATIONS

PREPARED: RPA OFFICE	CHECKED: GEOFFREY FEATHERSTONE
SCALE: 1:200	APPROVED: ROBY O'CONNOR
DATE: AUGUST 2008	

AREA NO. 106	PLAN NO. MN-ST 106 G-05	SUBJECT: RAIL ORDER
------------------------	----------------------------	------------------------

Copyright Railway Procurement Agency
This drawing is confidential and the copyright in it is owned by the RPA. This drawing must not be either issued,
copied or otherwise reproduced in whole or in part or used for any purpose without the prior permission of the RPA.
All U.S. data used for plans is generated from U.S. digitized maps and was printed under Ordnance Survey permit no. 05-8817

INTERNAL DOCUMENT NUMBER	STAGE	LINE	CONTRACT	ELEMENT	DPW NO.	DPW REV.
	L	MN	000	TO	106021	A