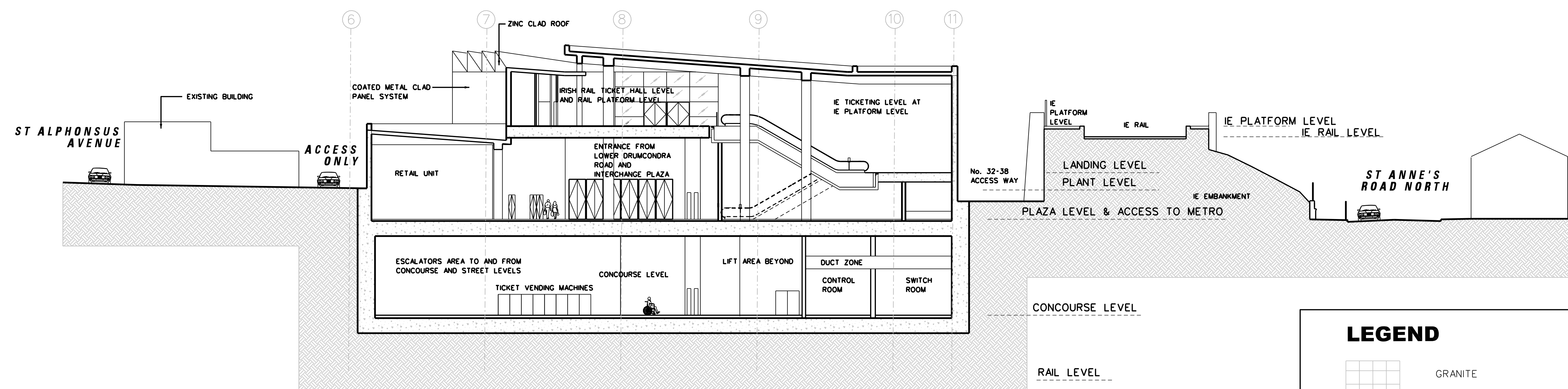


**LONGITUDINAL CROSS SECTION A-A**  
SCALE 1:200



**LONGITUDINAL CROSS SECTION B-B**  
SCALE 1:200

**LEGEND**

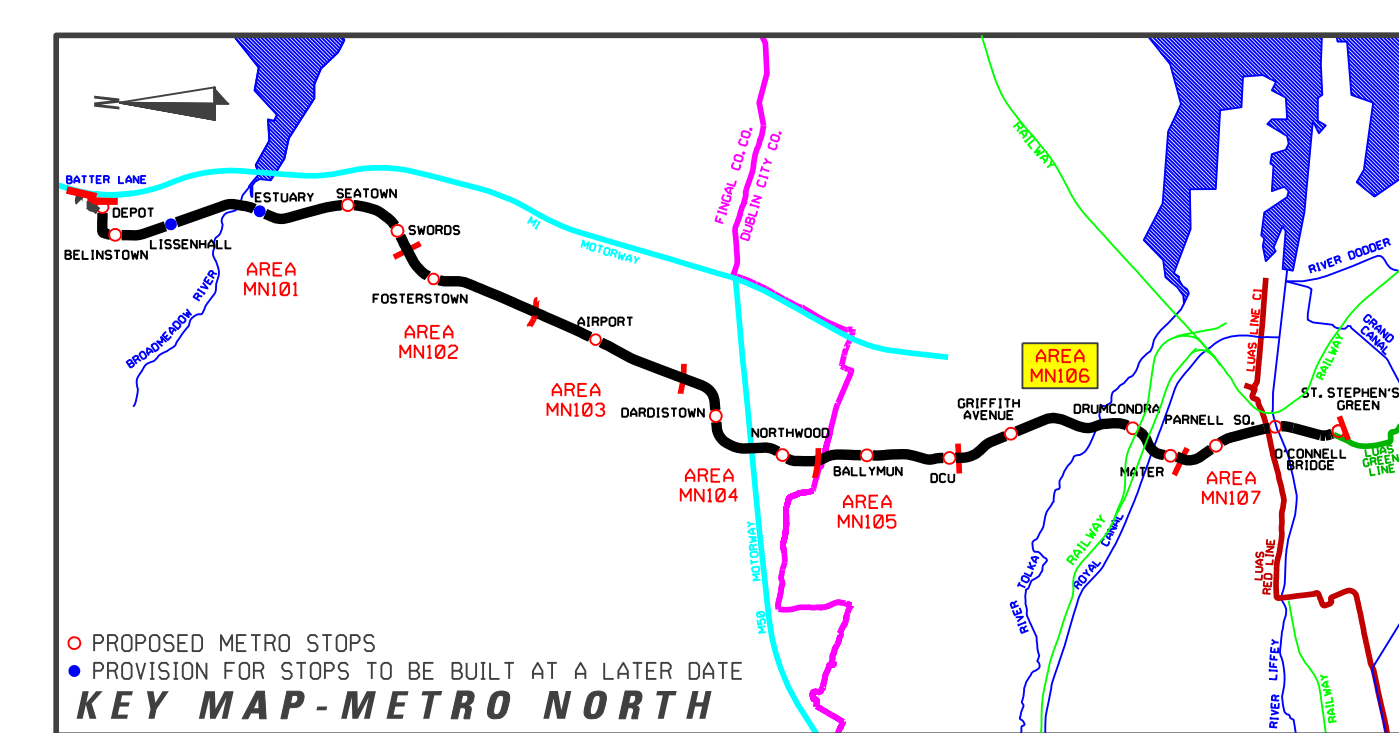
	GRANITE		EXISTING TREE
	GRANITE SETTS		EXISTING TREE REMOVED
	DETERRENT PAVING		NEW TREE
	EXISTING KERB REMOVED		EDGE PLANTING
	EXISTING BUILDING LINE		Tree Pit
	STRUCTURES TO BE REMOVED		HEDGE
	SWEPT PATH EDGE		LOW LYING GROUND COVER
	POLE SUPPORT		GRASS AREA
	DIRECTION OF TRAFFIC FLOW		PLATFORM - GRANITE SLABS

REFERENCE RELATED DRAWINGS

FOR 1:500 PLAN DRAWING SEE RAIL ORDER PLAN No. MN-RO 106 E-F(L/MN/000/GA/106006/A)

AND ALSO SEE

DRUMCONDRA STOP - SITE LOCATION PLAN	MN-ST 106 E-F1(L/MN/000/TO/106008/A)
DRUMCONDRA STOP - IARNROD EIREANN TICKET HALL PLAN	MN-ST 106 E-F2(L/MN/000/TO/106009/A)
DRUMCONDRA STOP - STREET LEVEL PLAN(ST. JOSEPH'S AVENUE)	MN-ST 106 E-F3(L/MN/000/TO/106010/A)
DRUMCONDRA STOP - STREET LEVEL PLAN(DRUMCONDRA ROAD LOWER)	MN-ST 106 E-F4(L/MN/000/TO/106011/A)
DRUMCONDRA STOP - CONCOURSE PLAN	MN-ST 106 E-F5(L/MN/000/TO/106012/A)
DRUMCONDRA STOP - MEZZANINE AND PLATFORM PLANS	MN-ST 106 E-F6(L/MN/000/TO/106013/A)
DRUMCONDRA STOP - ELEVATIONS	MN-ST 106 E-F7(L/MN/000/TO/106014/A)
DRUMCONDRA STOP - SECTIONS C-C & D-D	MN-ST 106 E-F9(L/MN/000/TO/106016/A)



REVISION	DATE	MODIFICATION	STATUS	CHECKED/APPROVED

Railway Procurement Agency

**TITLE**

**RAILWAY WORKS**  
LINE MN - STRUCTURES  
DRUMCONDRA STOP  
SECTIONS A-A & B-B

PREPARED: RPA OFFICE	CHECKED: GEOFFREY FEATHERSTONE
SCALE: 1:200	APPROVED: RORY O'DONOR
DATE: AUGUST 2008	

AREA NO. <b>106</b>	PLAN NO. <b>MN-ST 106 E-F</b>	SUBJECT: <b>RAIL ORDER</b>
---------------------	-------------------------------	----------------------------

© Copyright Railway Procurement Agency  
This drawing is confidential and the copyright is reserved by the RPA. This drawing must not be either issued, copied or otherwise reproduced in whole or in part or used in any program or system without the prior permission of the RPA.  
All U.S. data used for plans is generated from U.S. digital data and was printed under Ordnance Survey permit no. 05.0817

INTERNAL DOCUMENT NUMBER	STAGE	LINE	CONTRACT	ELEMENT	OPW NO.	OPW REV.
	L	MN	000	TO	106015	A