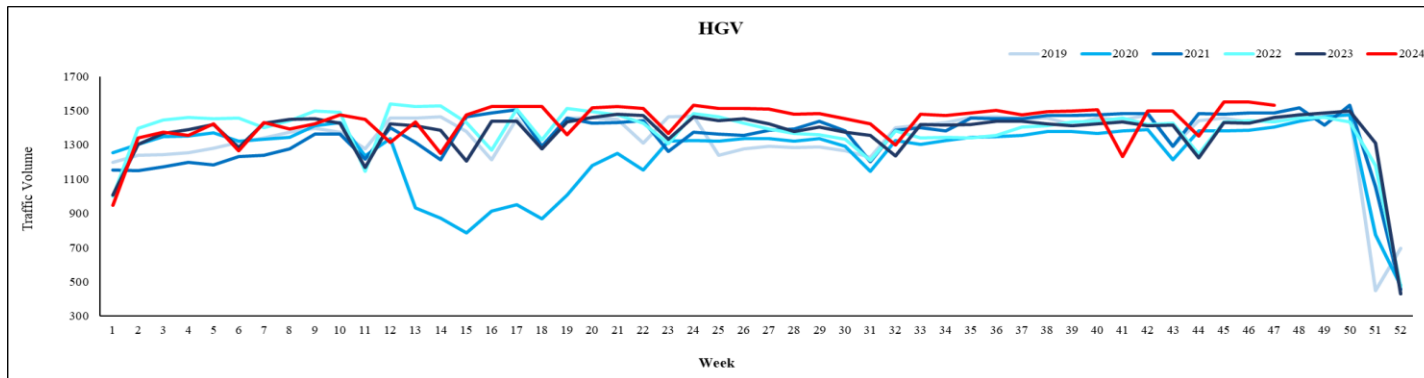
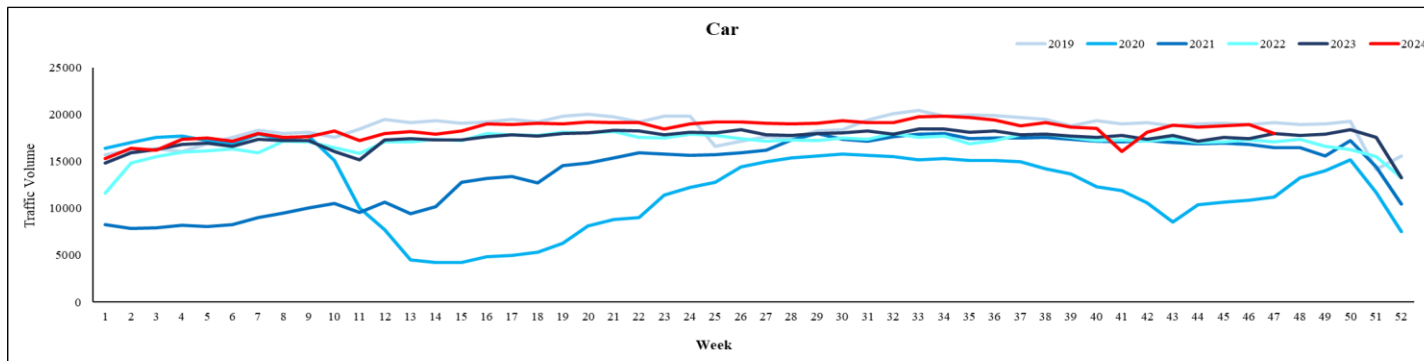
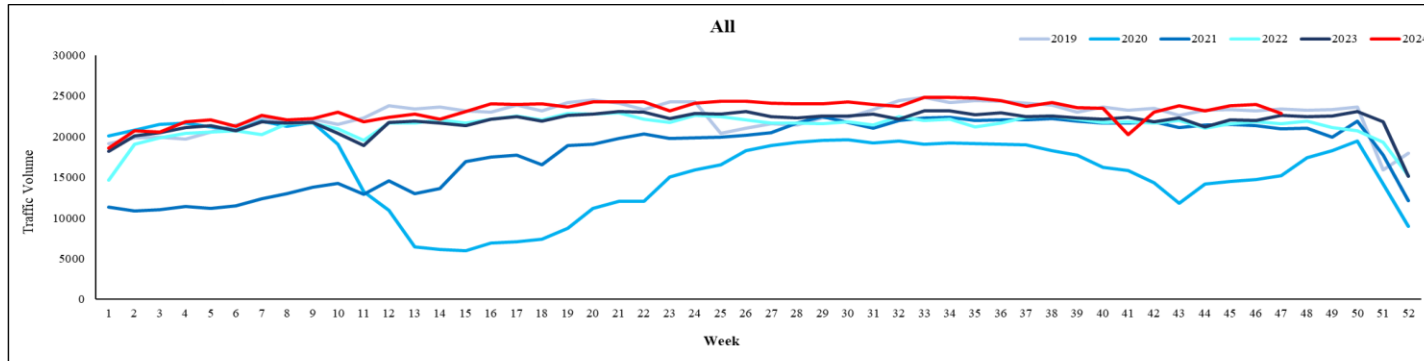


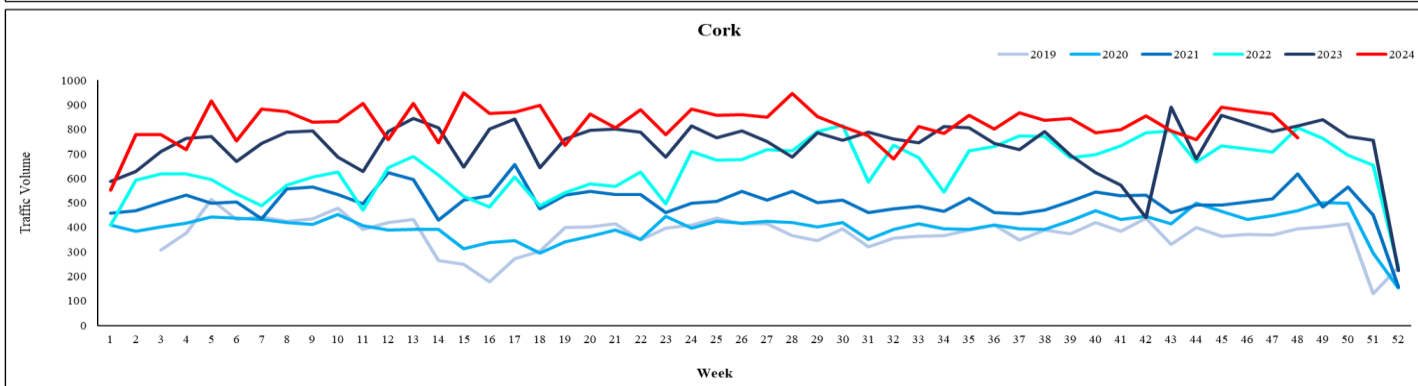
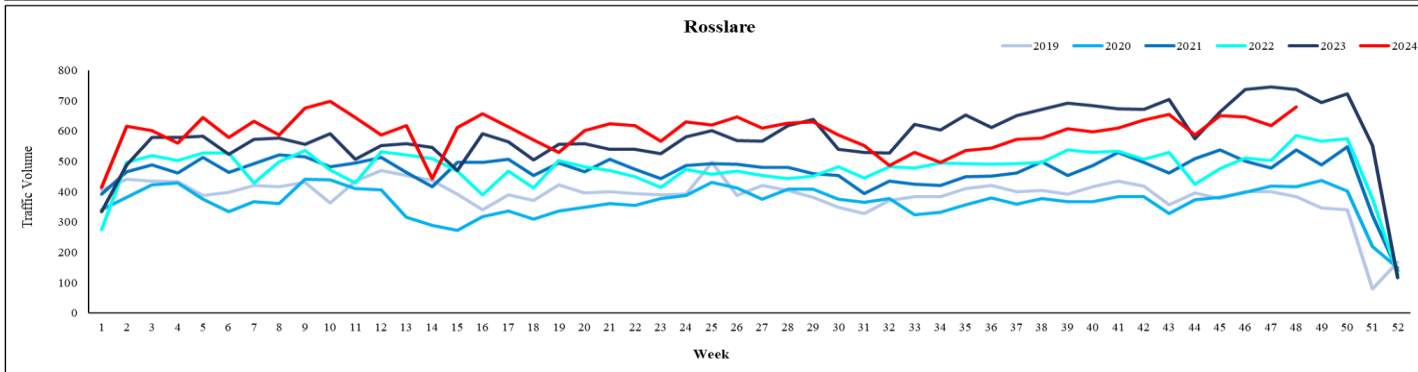
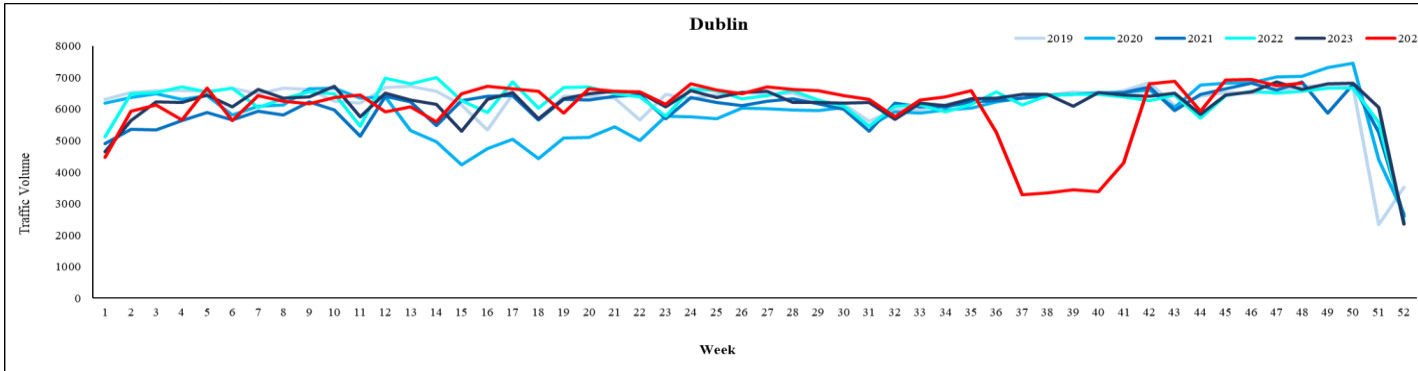
# Traffic Dashboard | Comparison 2019 to 2024



	Last week's average traffic volume					
	2024	% change in 2024 relative to				
		2019	2020	2021	2022	2023
All	22,856	-2%	+51%	+9%	+6%	+1%
Car	17,959	-6%	+60%	+9%	+5%	0%
HGV	1,531	+6%	+9%	+3%	+7%	+5%

- These graphs have been prepared using data from all traffic counters installed on the national road network. The 'Traffic Volume' represents the sum of traffic volumes, from all counters, divided by the number of traffic counting sites.
- These graphs represent the average daily traffic volume per week for All traffic (Cars and HGVs) for 2024, 2023, 2022, 2021, 2020 and 2019.
- Please note that several traffic counters lost traffic count data between June and August 2019. Consequently, the traffic counts for that period are likely to vary than what is shown on the graphs.
- Up to date daily traffic numbers and trends over the year can be found in the link below (updated daily):  
<https://www.tii.ie/roads-tolling/operations-and-maintenance/traffic-count-data/covid-traffic-patterns/>
- Temporary unavailability of the data for 8<sup>th</sup>, 9<sup>th</sup> and 10<sup>th</sup> March 2024. Therefore, the values were estimated.
- Please note, an interruption in the transfer of data between individual sites and the data interface occurred on 8<sup>th</sup> October 2024 and again since 26<sup>th</sup> November. These gaps in the graphs will be filled once the data becomes available.

# HGV Port Dashboard | Comparison 2019 to 2024



	Last week's average daily traffic volume					
	2024	% change in 2024 relative to				
		2019	2020	2021	2022	2023
Dublin	6,825	+2%	-3%	-1%	+4%	+3%
Rosslare	680	+77%	+63%	+27%	+16%	-8%
Cork	767	+95%	+64%	+24%	-5%	-6%

- These graphs have been prepared using data from the traffic counters at the ports in Dublin, Rosslare and Cork. The graphs represent the average daily traffic volume per week for articulated HGV traffic for 2024, 2023, 2022, 2021, 2020 and 2019.
- Please note that, for the Dublin Port Traffic Counter, traffic data has been impacted due to resurfacing works between the period 4<sup>th</sup> September 2024 and 3<sup>rd</sup> November 2024.
- There was +0.6% increase in overall articulated HGV flow at the ports last week compared to the previous week.
- At Dublin Port, the shares between inbound and outbound articulated-HGV traffic were 51% and 49% respectively.
- At Rosslare Port, the shares between inbound and outbound articulated-HGV traffic were 48% and 52% respectively
- At Cork Port, the shares between inbound and outbound articulated-HGV flow was nearly equal.