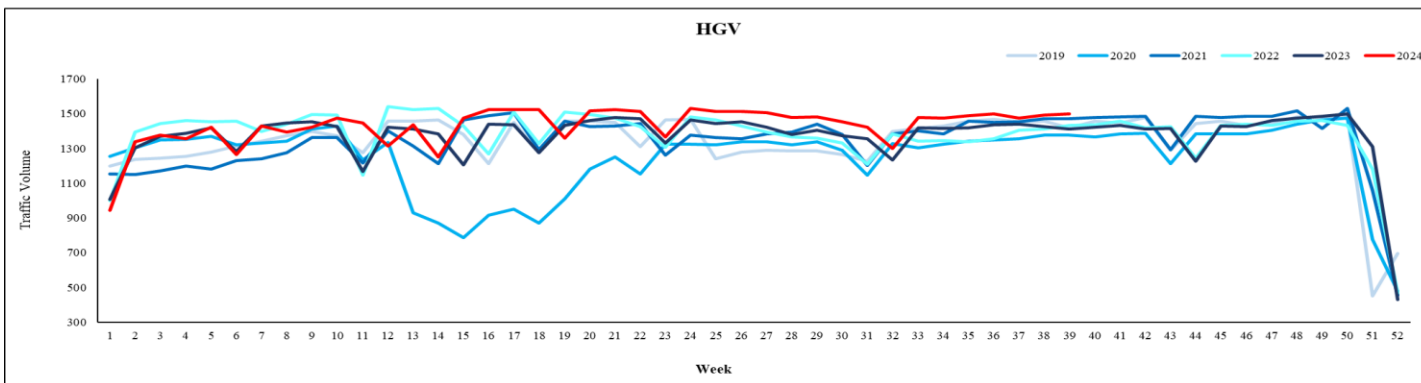
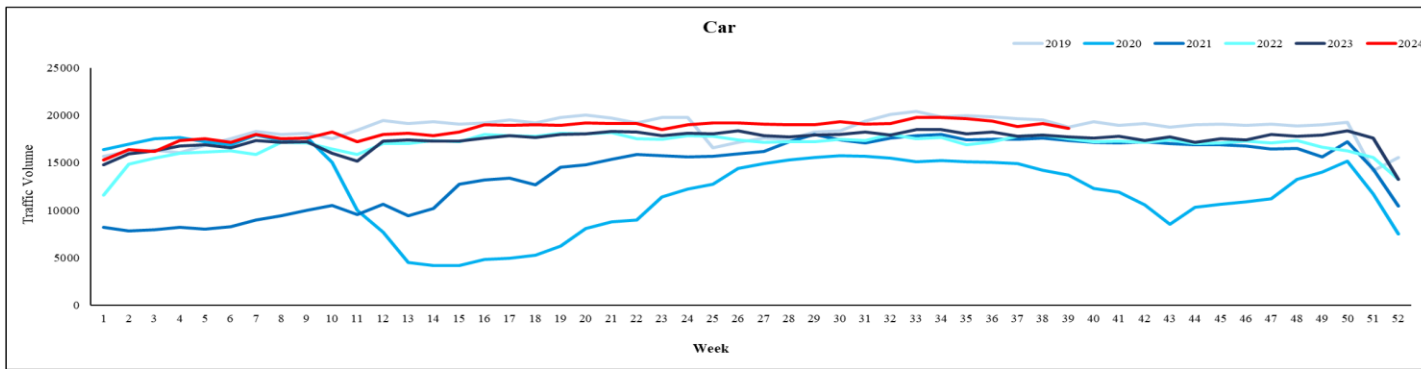
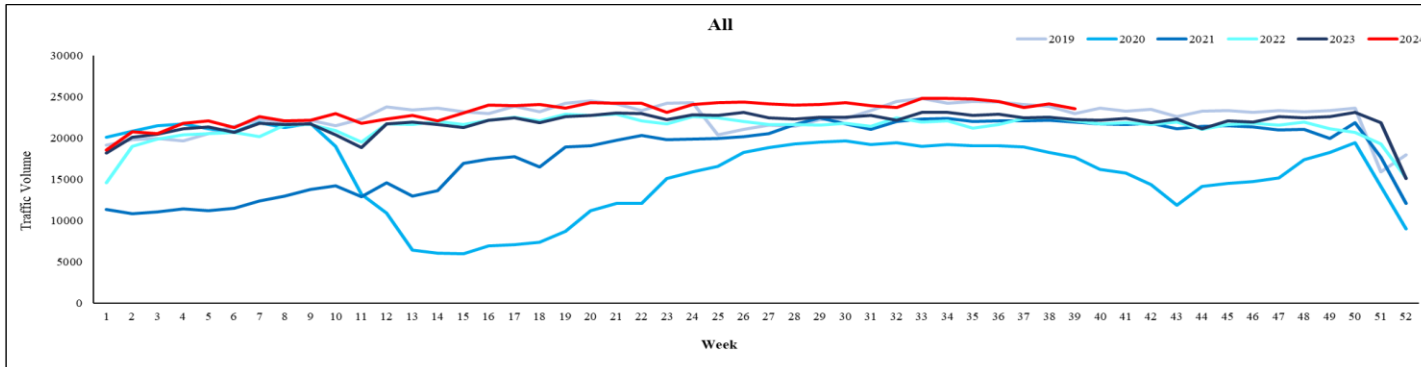


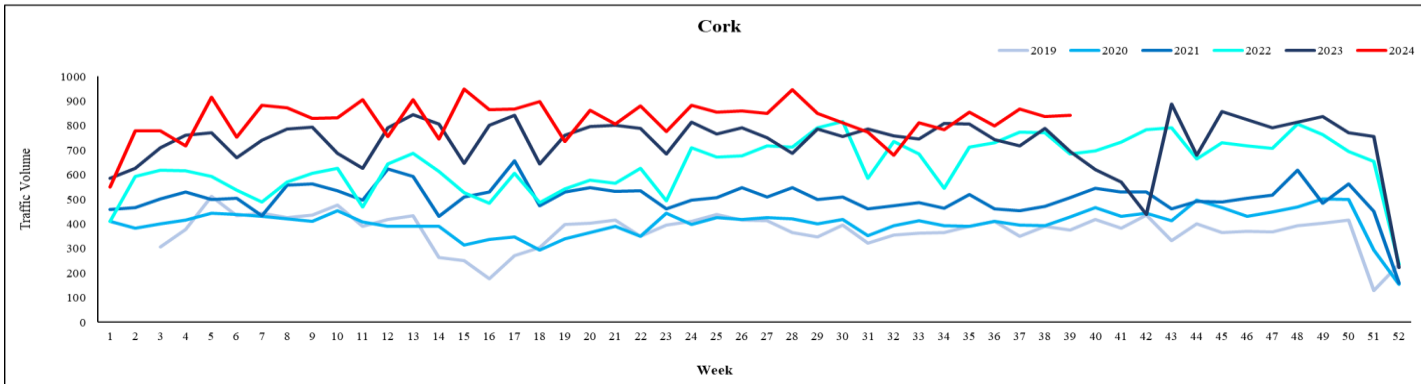
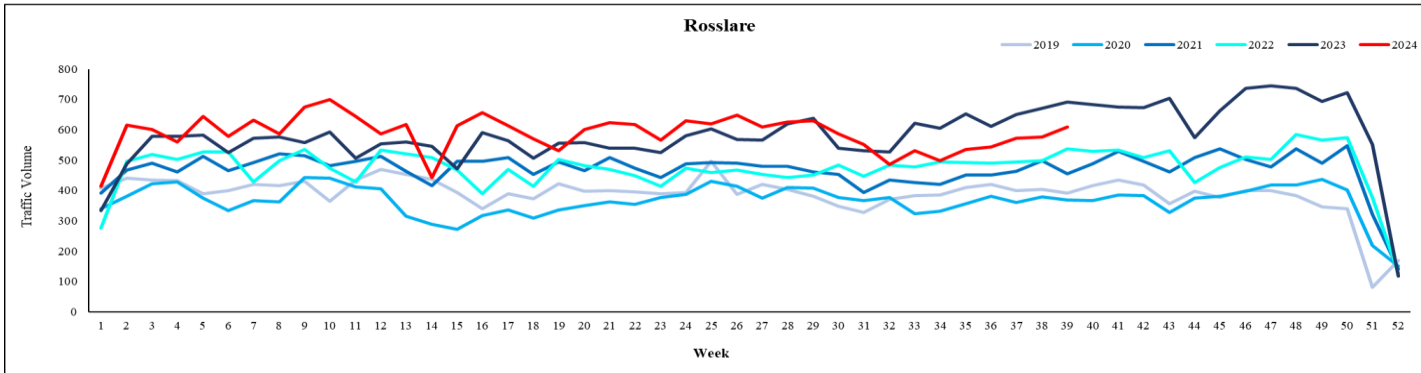
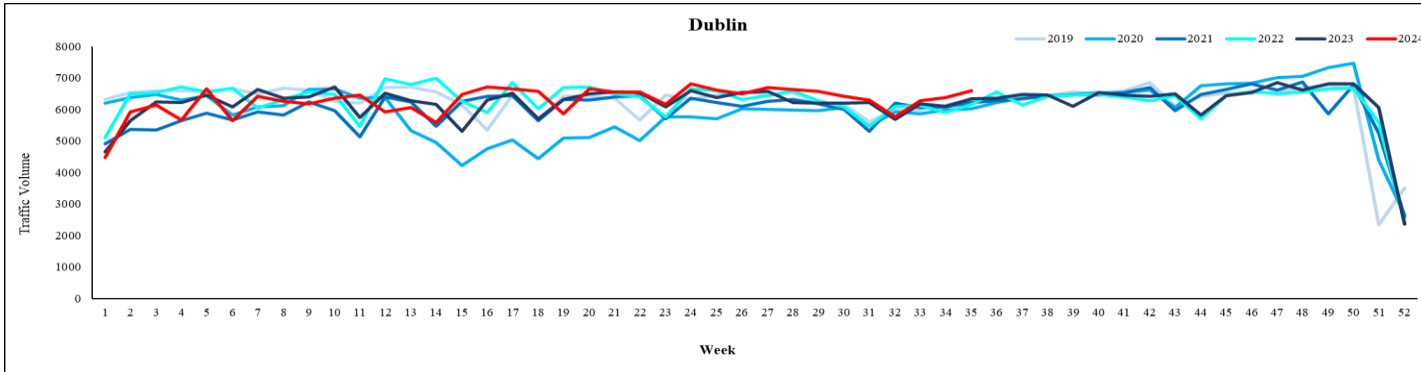
# Traffic Dashboard | Comparison 2019 to 2024



	Last week's average traffic volume					
	2024	% change in 2024 relative to				
		2019	2020	2021	2022	2023
All	23,570	+3%	+33%	+8%	+7%	+6%
Car	18,630	-1%	+36%	+7%	+6%	+5%
HGV	1,498	+5%	+9%	+2%	+4%	+6%

- These graphs have been prepared using data from all traffic counters installed on the national road network. The 'Traffic Volume' represents the sum of traffic volumes, from all counters, divided by the number of traffic counting sites.
- These graphs represent the average daily traffic volume per week for All traffic (Cars and HGVs) for 2024, 2023, 2022, 2021, 2020 and 2019.
- Please note that several traffic counters lost traffic count data between June and August 2019. Consequently, the traffic counts for that period are likely to vary than what is shown on the graphs.
- Up to date daily traffic numbers and trends over the year can be found in the link below (updated daily):  
<https://www.tii.ie/roads-tolling/operations-and-maintenance/traffic-count-data/covid-traffic-patterns/>
- Temporary unavailability of the data for 8<sup>th</sup>, 9<sup>th</sup> and 10<sup>th</sup> March 2024. Therefore, the values were estimated.

# HGV Port Dashboard | Comparison 2019 to 2024



	Last week's average daily traffic volume					
	2024	% change in 2024 relative to				
		2019	2020	2021	2022	2023
Dublin	-	-	-	-	-	-
Rosslare	608	+55%	+65%	+34%	+13%	-12%
Cork	843	+125%	+97%	+66%	+23%	+21%

- These graphs have been prepared using data from the traffic counters at the ports in Dublin, Rosslare and Cork. The graphs represent the average daily traffic volume per week for articulated HGV traffic for 2024, 2023, 2022, 2021, 2020 and 2019.
- Please note that traffic data was not recorded for multiple periods between the 30th September and the 20th October 2023 at Cork port counter.
- Please note that traffic data was not recorded at the Northbound lanes since 4th September 2024 at the Dublin port counter due to road resurfacing works. Therefore, the data was excluded from the analysis.
- There was +2.8% increase in overall articulated HGV flow at the ports last week compared to the previous week
- At Cork Port, the shares between inbound and outbound articulated-HGV flow was nearly equal.
- At Rosslare Port, the shares between inbound and outbound articulated-HGV traffic were 47% and 53% respectively.