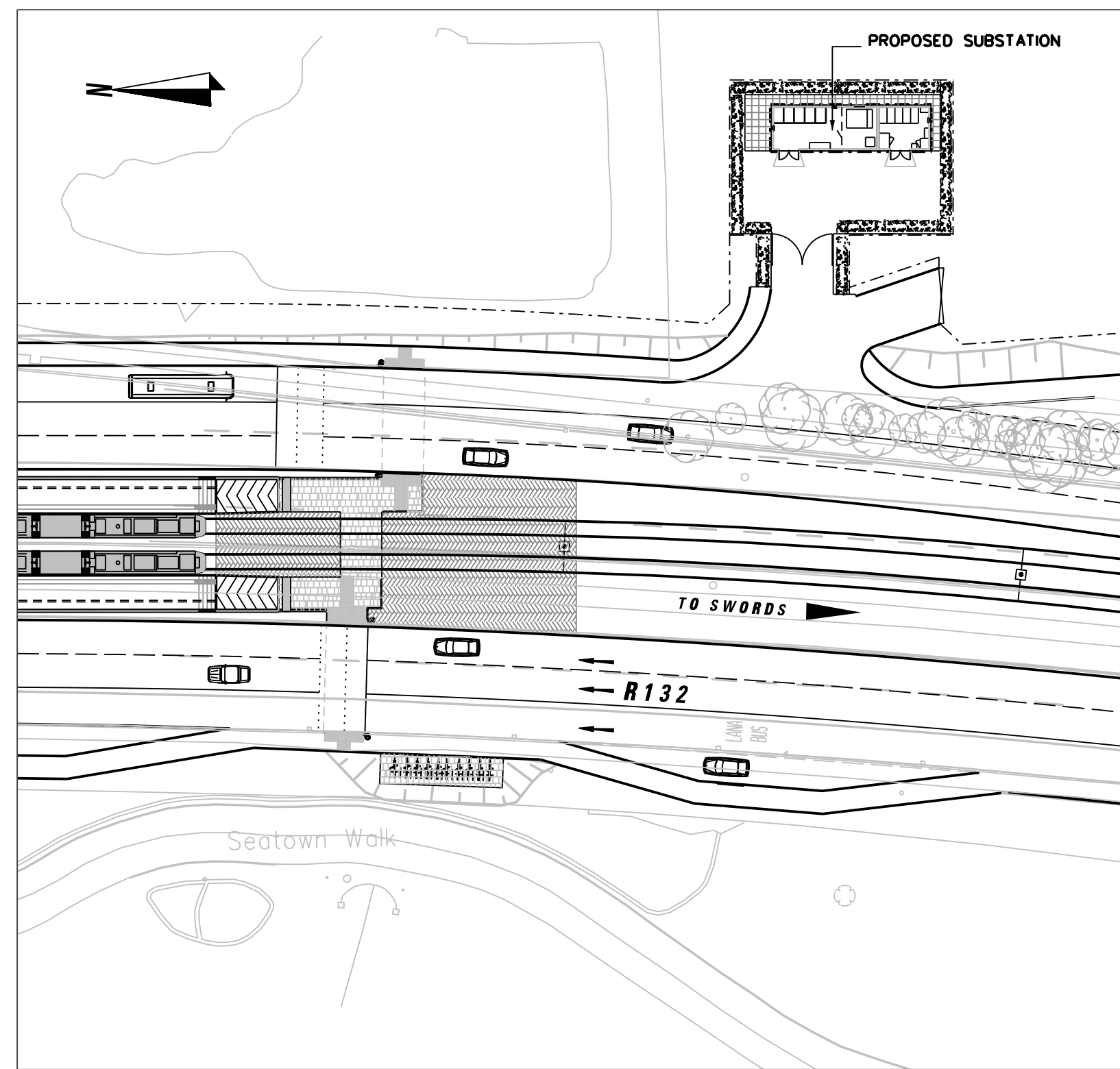
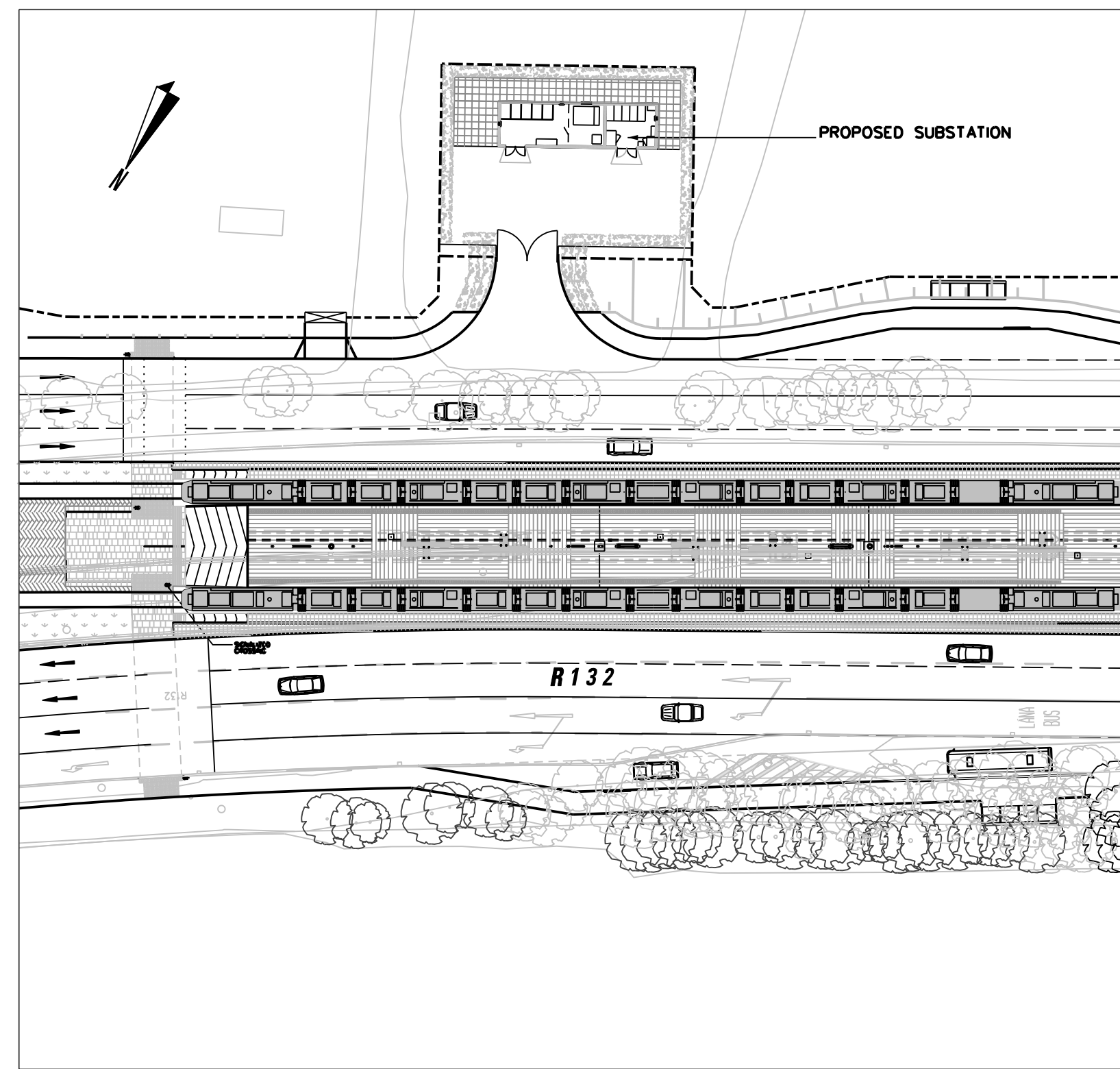


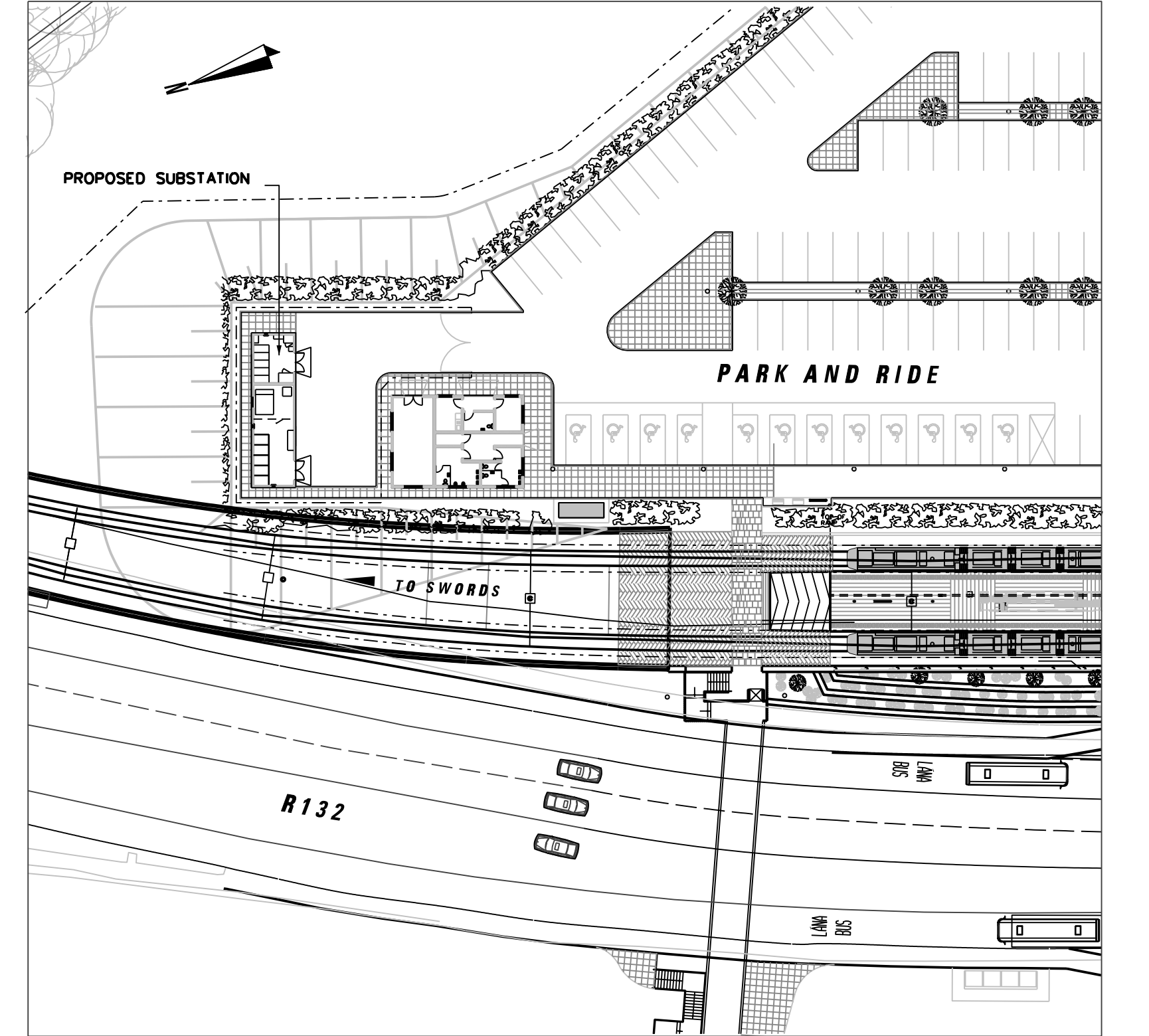
LISSENHALL
SCALE 1:500



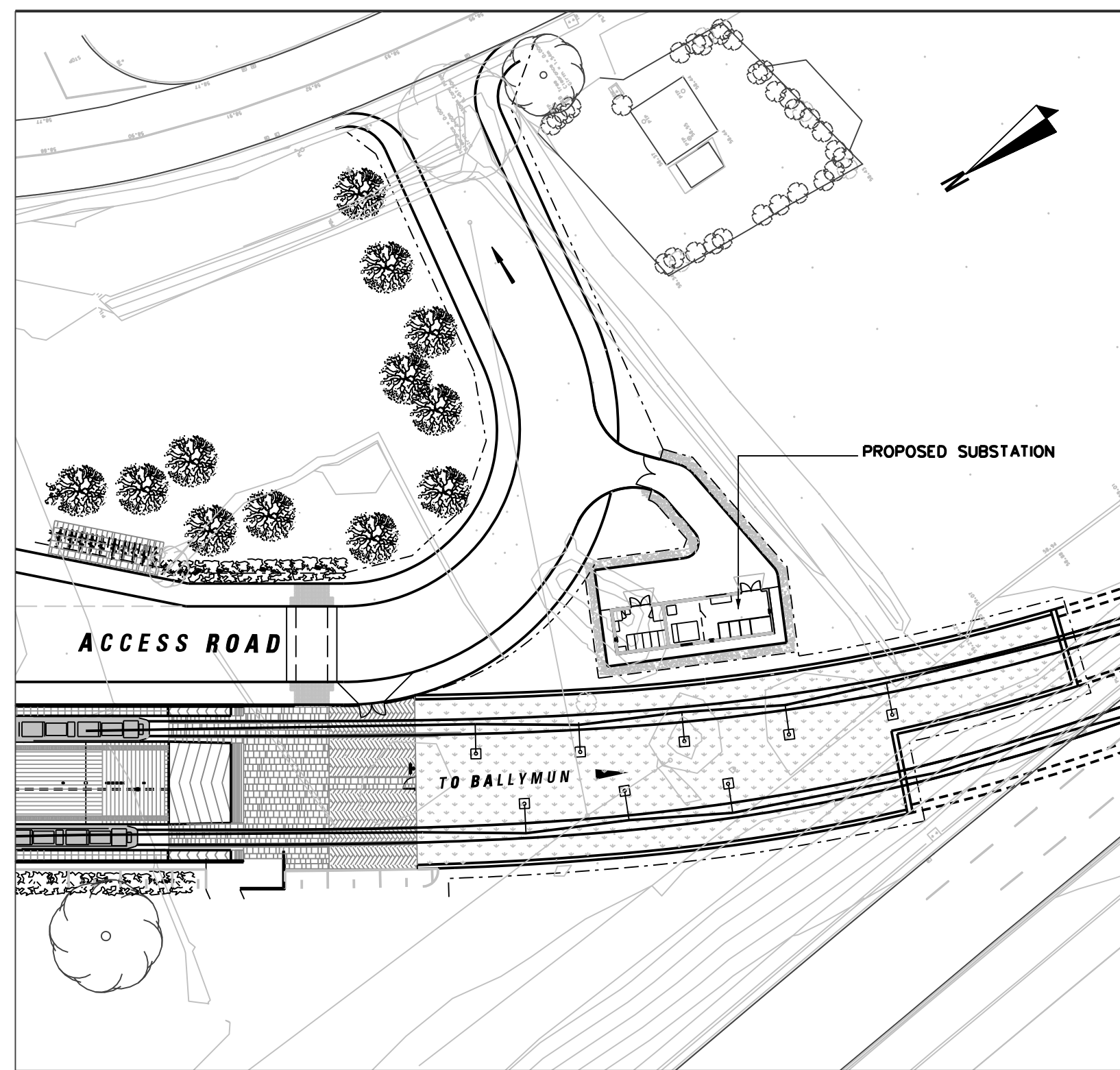
SEATOWN
SCALE 1:500



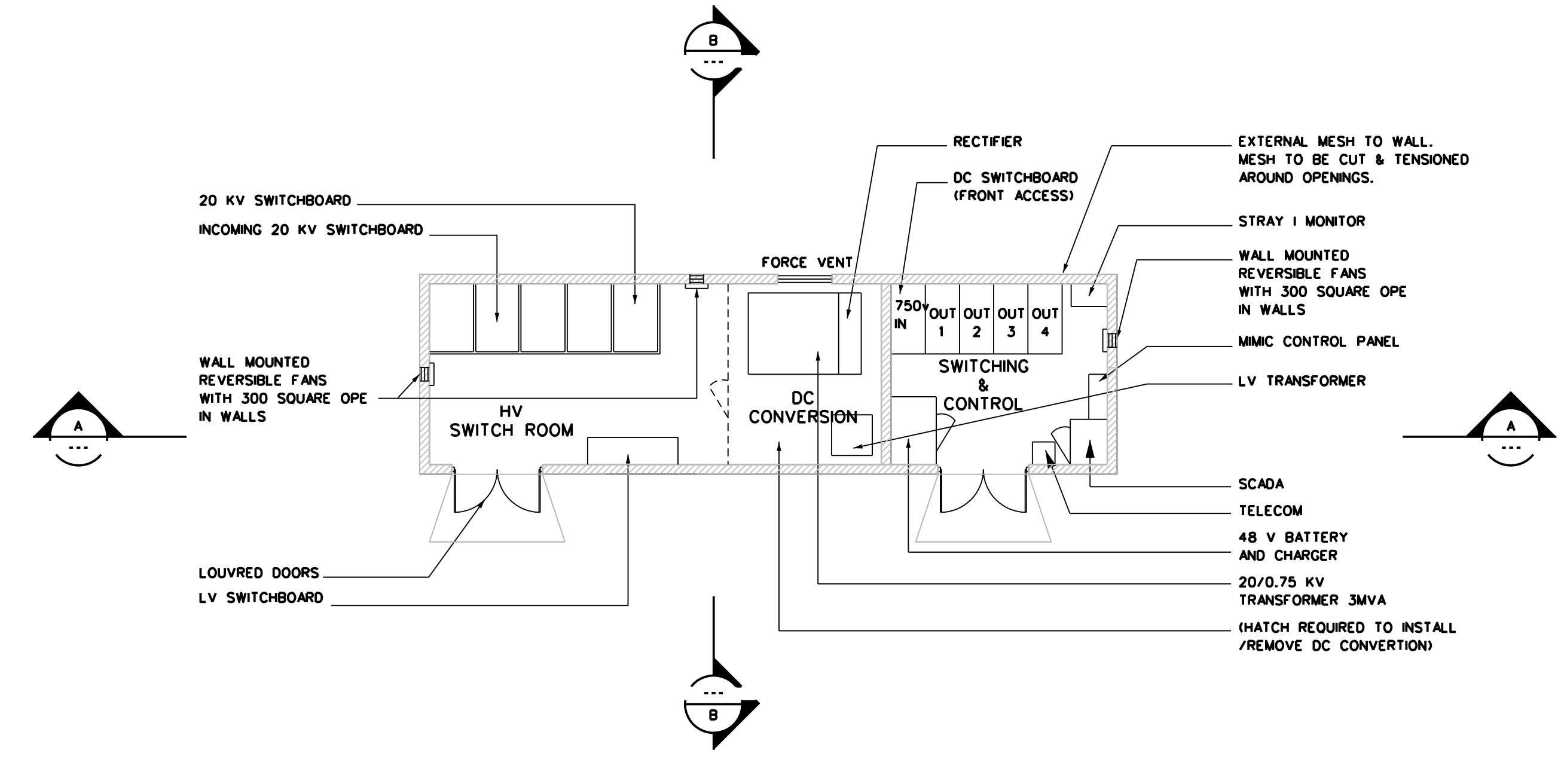
SWORDS
SCALE 1:500



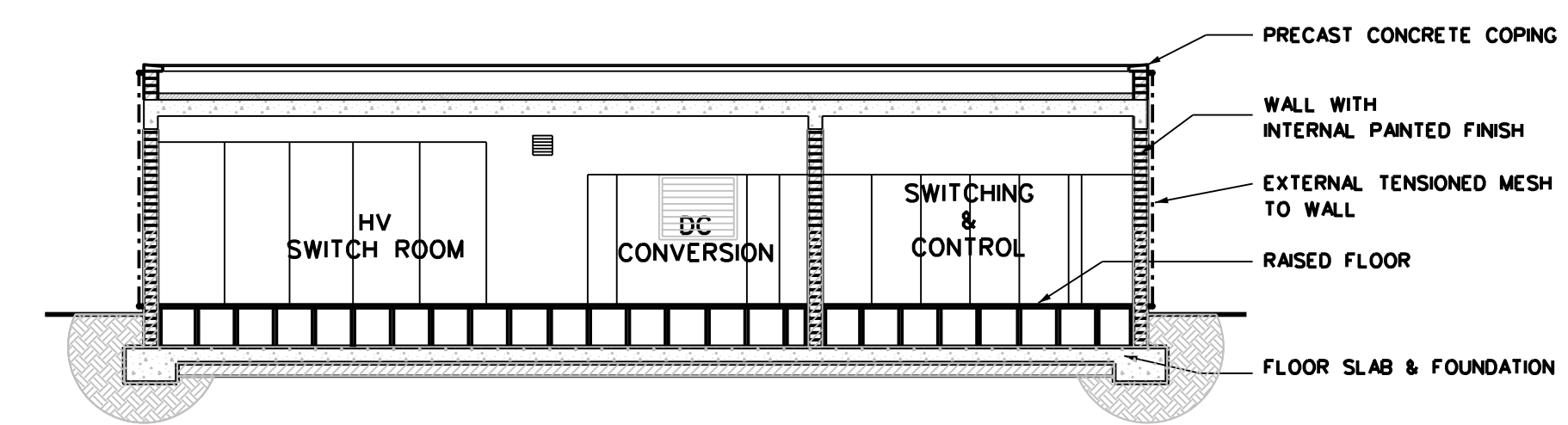
FOSTERSTOWN
SCALE 1:500



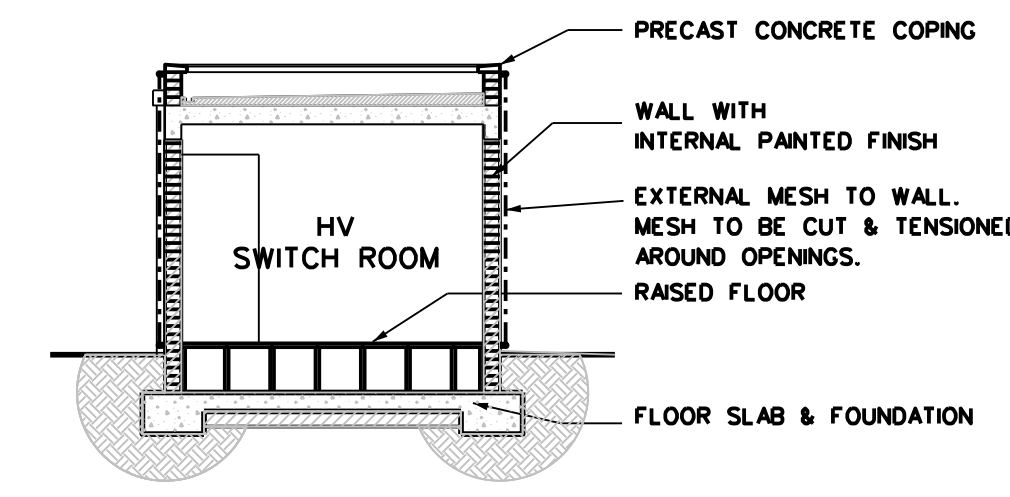
NORTHWOOD
SCALE 1:500



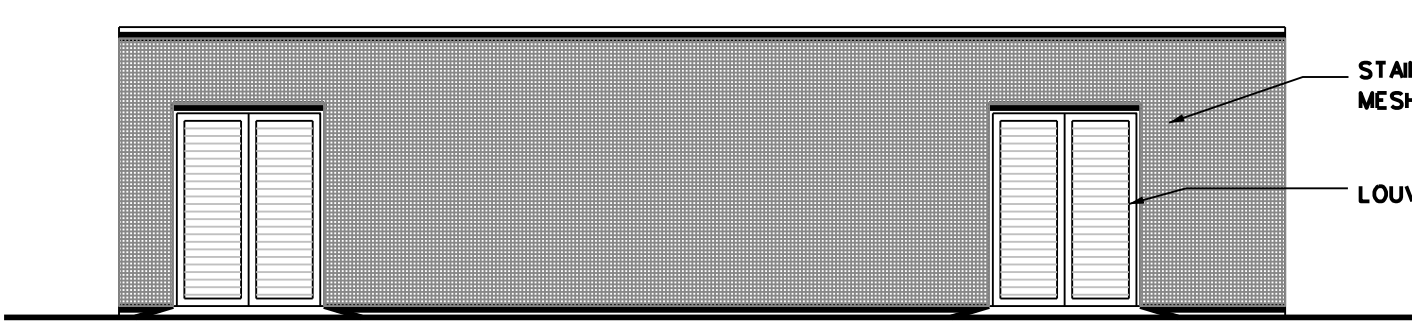
PLAN
SCALE 1:100



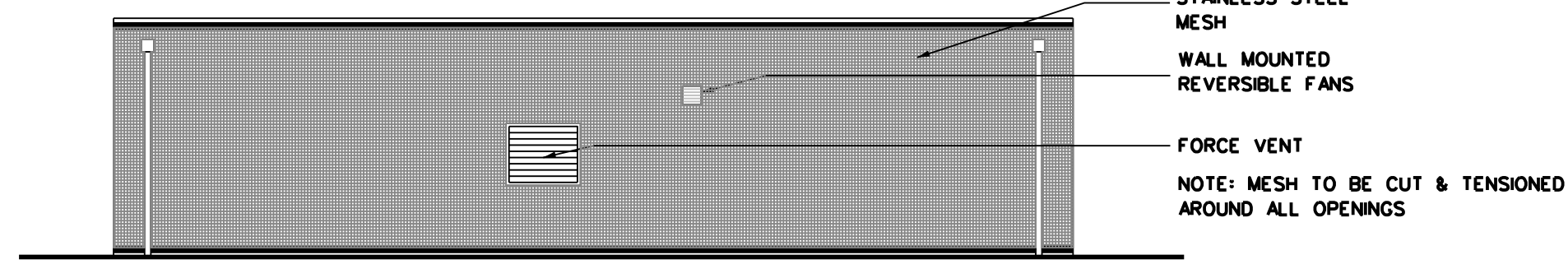
SECTION A-A
SCALE 1:100



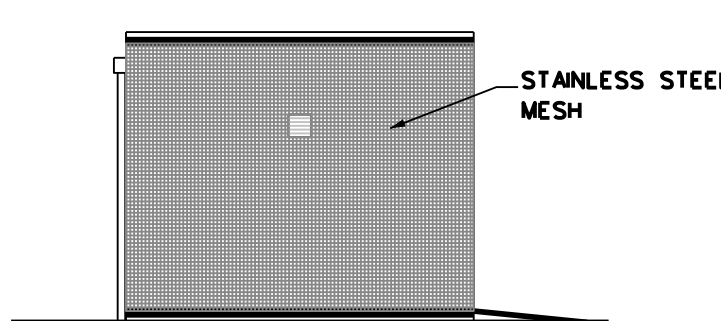
SECTION B-B
SCALE 1:100



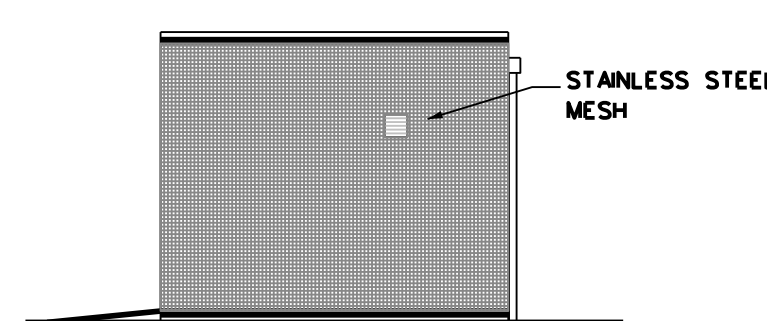
FRONT ELEVATION
SCALE 1:100



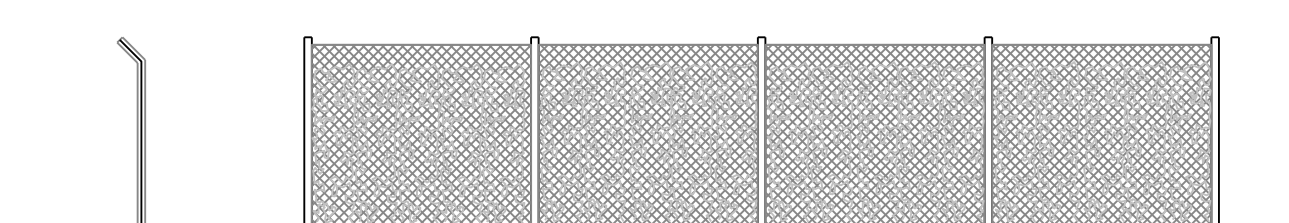
REAR ELEVATION
SCALE 1:100



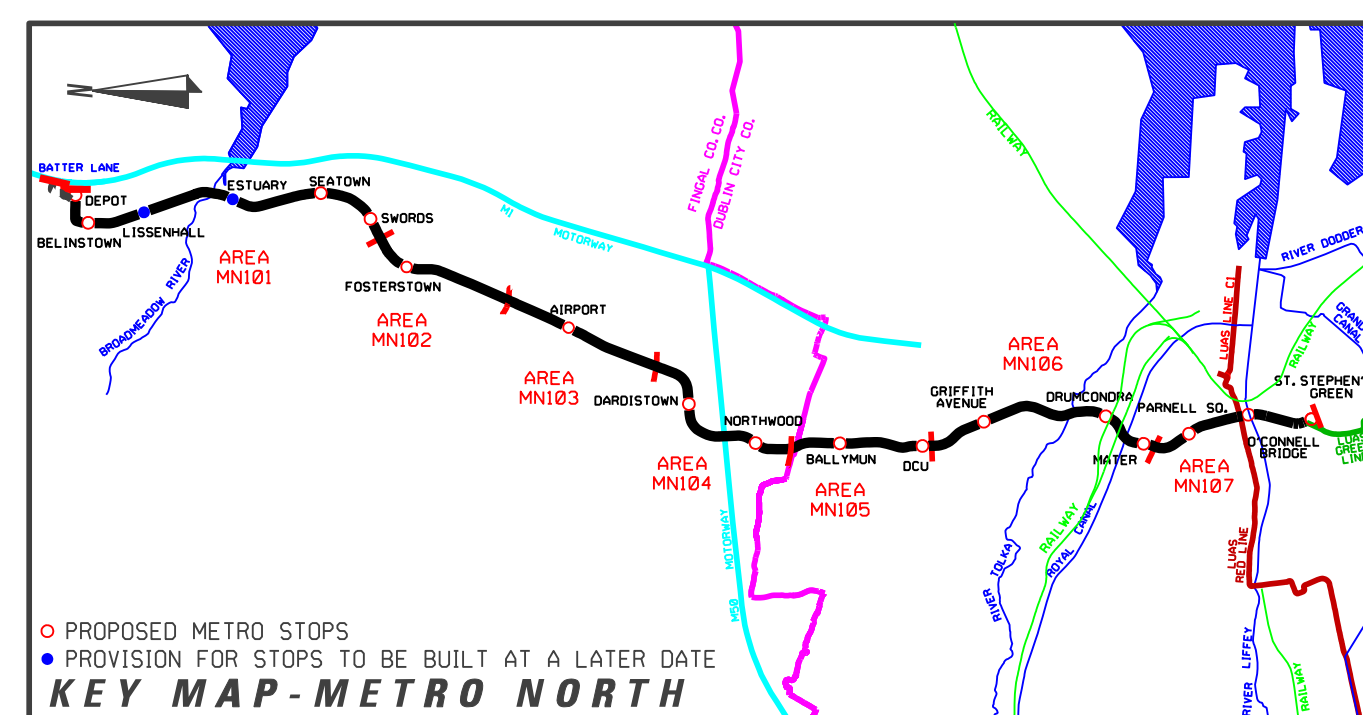
SIDE ELEVATION
SCALE 1:100



SIDE ELEVATION
SCALE 1:100



TYPICAL FENCE TO SUBSTATION
SCALE 1:100



LEGEND

	GRANITE		EXISTING TREE
	GRANITE SETTS		EXISTING TREE REMOVED
	DETERRENT PAVING		NEW TREE
	EXISTING KERB REMOVED		EDGE PLANTING
	EXISTING BUILDING LINE		TREE PIT
	STRUCTURES TO BE REMOVED		HEDGE
	SWEEP PATH EDGE		LOW LYING GROUND COVER
	POLE SUPPORT		GRASS AREA
	DIRECTION OF TRAFFIC FLOW		PLATFORM - GRANITE SLABS

REFERENCE RELATED DRAWINGS

FOR 1:500 PLAN DRAWINGS SEE RAIL ORDER PLAN No's.
 MN-RO 101 D-E (L/MN/000/GA/101005/A) FOR LISSENHALL
 MN-RO 101 J-K (L/MN/000/GA/101010/A) FOR SEATOWN
 MN-RO 101 K-O (L/MN/000/GA/101011/A) FOR SWORDS
 MN-RO 102 A-B (L/MN/000/GA/102002/A) FOR FOSTERSTOWN
 MN-RO 104 D-O (L/MN/000/GA/104007/A) FOR NORTHWOOD

Copyright Railway Procurement Agency
 This drawing is confidential and the copyright in it is owned by the RPA. This drawing must not be either issued,
 copied or otherwise reproduced in whole or in part or used in any program or system without the prior permission of the RPA.
 All U.S. data used for plans is generated from U.S. digital data and was printed under Ordnance Survey permit no. 05-8817

INTERNAL DOCUMENT NUMBER	STAGE	LINE	CONTRACT	ELEMENT	DPW NO	DPW REV
	L	MN	000	SX	000001	A

REVISION	DATE	MODIFICATION	STATUS	CHECKED/APPROVED

RPA Railway Procurement Agency

METRO

TITLE: RAILWAY WORKS LINE MN - STRUCTURES TYPICAL SUBSTATION

PREPARED: RPA OFFICE
 SCALES: 1:500, 1:100
 DATE: AUGUST 2008

CHECKED: GEOFFREY FEATHERSTONE
 APPROVED: ROBY O'DONOR

AREA NO: **000**
 PLAN NO: **MN-SS 000 0-0**
 SUBJECT: **RAIL ORDER**