

Updating the TII National Transport Model and its Application in Planning the Network

TII National Roads Conference 2018





NTpM Update

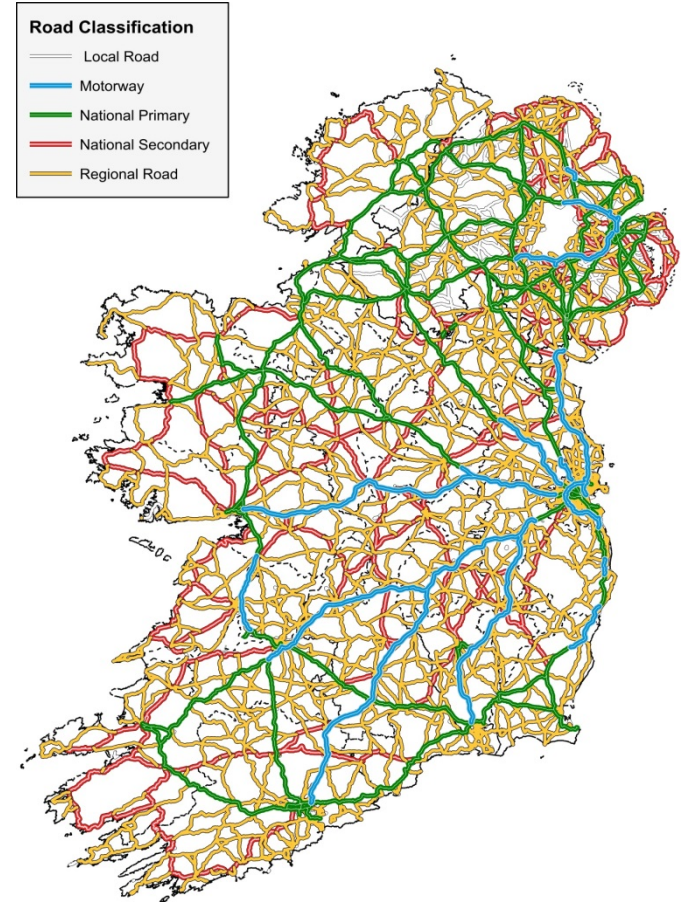
1

National Transport Model

Overview

NTpM Overview

- Transport model covering Road and Rail Transport
- Focused on inter-urban and strategic trips
- Ability to forecast strategic travel patterns across Ireland
- Flexibility to assess various views of the future

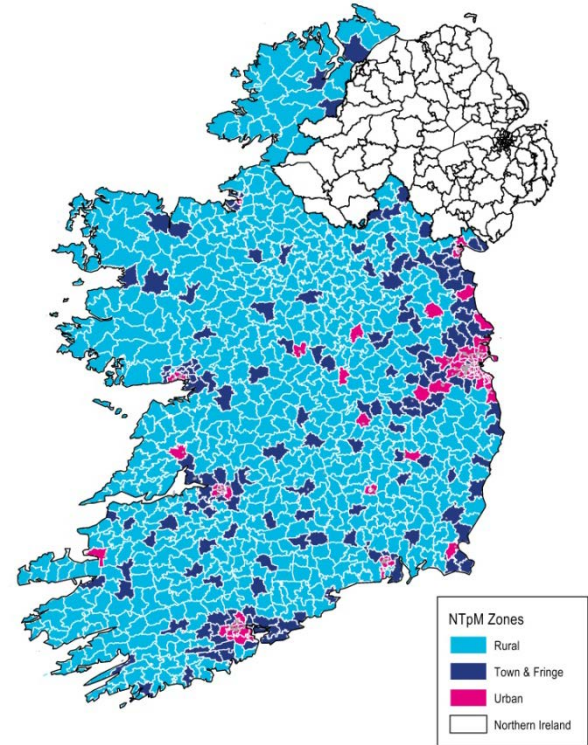


National Transport Model - Update

Introduction

NTpM Update

- First developed in 2008 – Last updated in 2013
- Full update undertaken every 5 years (following the publication of Census Results)
- 2016 POWSCAR Database (Origin-Destination Journey to Work and Education by mode)
- Various Input Data (Freight, TII TMU, Irish Rail, Inter Urban Bus etc.)



National Transport Modelling Update

Transport Demand Changes 2011 - 2016

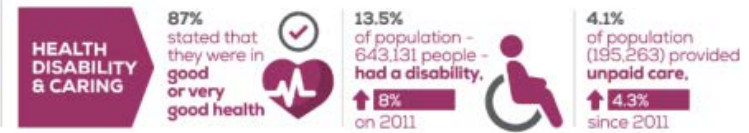
Changes Impacting Transport Demand (Census 2011 – 2016)

- **Population** increase from 4.59m to 4.76m (3.7%)
- **Unemployment** decrease from 15% to 8.9% (-6.1%)
- No. of **Private Cars** increased from 1.89m to 2.03m (7.4%)
- **Irish Rail Passengers** increased from 37.4m to 42.8m (14.4%)
- **Port Tonnages** increased from 45.1m to 50.7m (10.8%)



CENSUS 2016 SUMMARY RESULTS - PART 2

census
2016
RESULTS
www.cso.ie





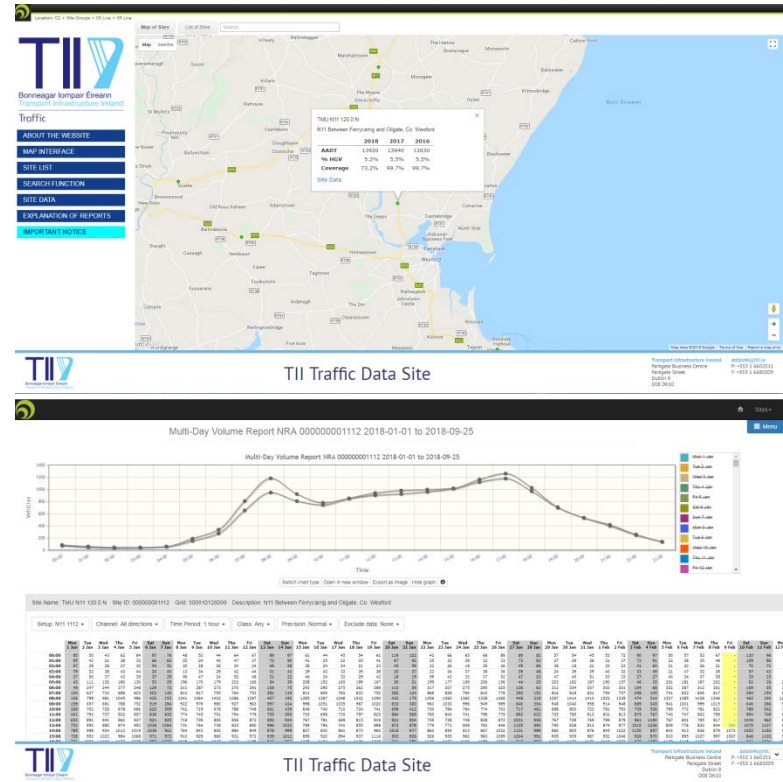
NTpM Update Enhancements

2

National Transport Model - Update Enhancements

TII Traffic Monitoring Units

- Over 300 TII TMUs in Operation
- Wide geographical coverage
- Additional 40+ TMUs in place since 2013
- Used on an annual basis to inform the TII National Roads Indicators Report



National Transport Model - Update

Enhancements

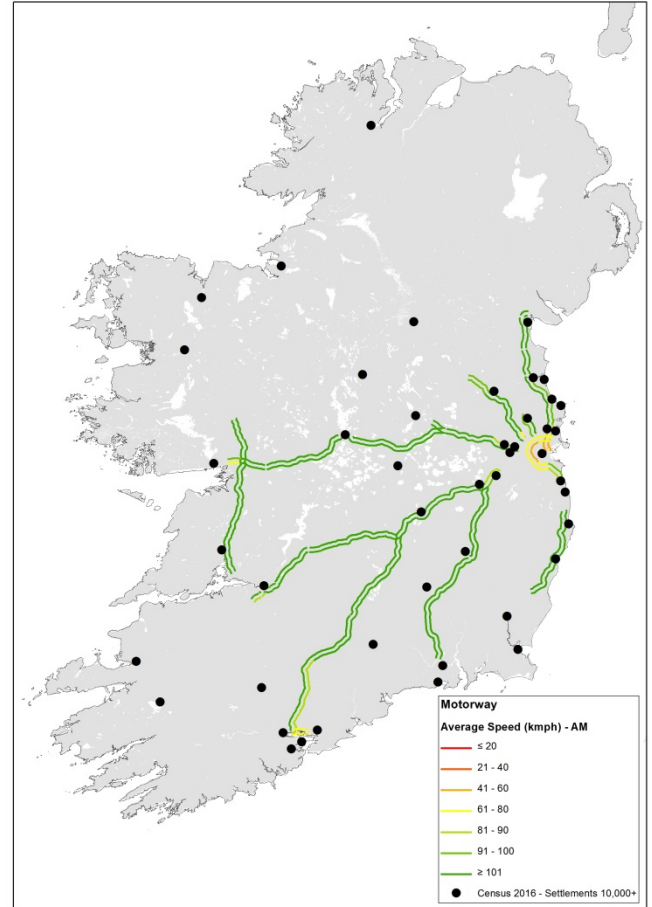
Journey Time Data

Google Maps Distance Matrix

- Journey Times and Distance Data
- Application Programming Interface (API)

Example

- Irish Motorways
- AM Peak Average Speed



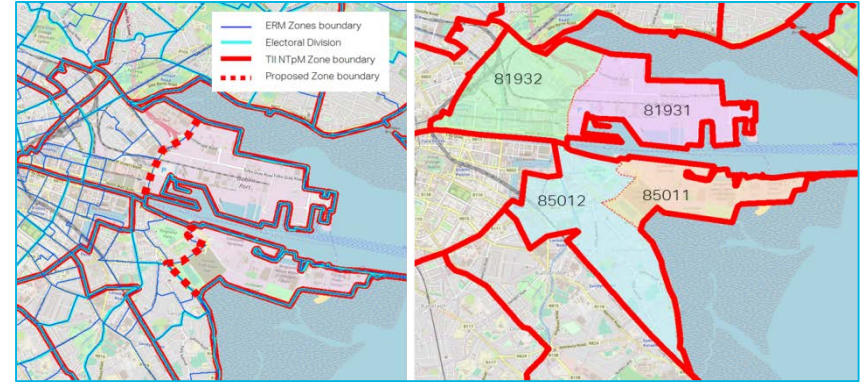
National Transport Model - Update

Enhancements

Zone Structure

Refinement of Zone Structure

- Isolation of Special Zones
- Flexibility to assess future growth scenarios
- Refinement of Zones along the M50
- Compatibility with NTA Regional Models



Special Zones Examples

- Ports – Dublin, Cork, Foynes, Waterford, Rosslare
- Airports – Dublin, Cork Airport, Shannon, Knock

National Transport Model - Update

Enhancements

Flexibility to Assess Various Future Scenarios

National Planning Framework

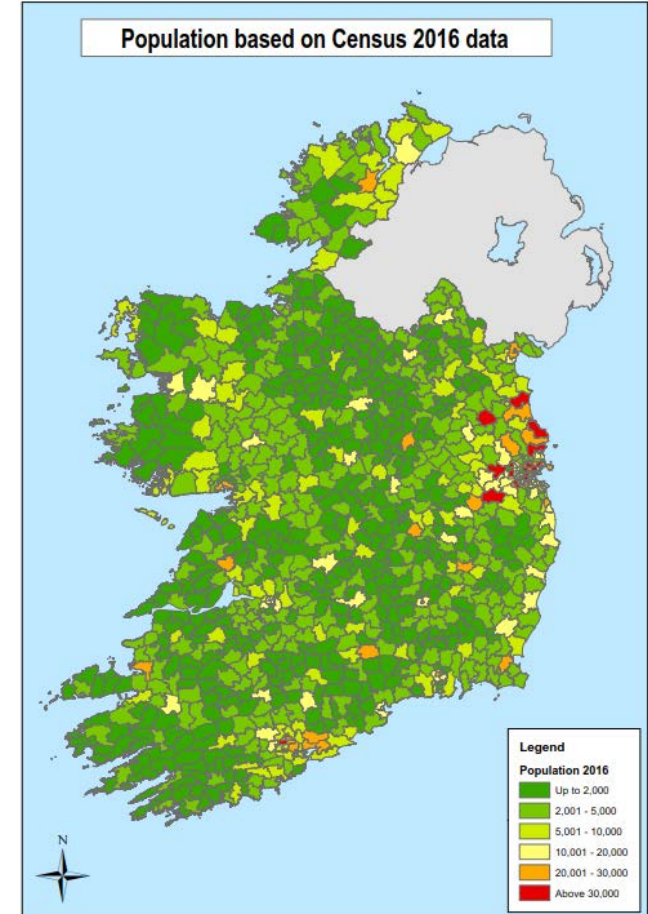
- 50% population growth in Metropolitan Areas of Dublin, Cork, Limerick, Galway and Waterford

Current Trends

- Continuation of dominance of Dublin Region
- Urban sprawl

Technology Impacts

- CAV / CITS / Electrification of Fleet
- Increase or decrease of traffic on the National Roads network





NTpM Applications

3

National Transport Model

Current Applications

M50 Demand Management
Report
April 2014

NRA dlr

Demand Management



Local Area Models

TII Traffic Indices

Region	2014 / 2015	2015 / 2016	2016 / 2017	2017 / 18
All National Roads	3.8	4.2	5.1	
Border	4.1	4.5	5.7	
Dublin	5	4.2	3.2	
Mid East	5.2	4.7	3.4	
Mid West	4.1	4.8	3.7	
Mid West	5.8	5.2	4	
South East	4	3.4	3.7	
South West	1.2	2.8	2.8	
West	3.3	3.4	2	

Traffic Indices

DRAFT AECOM TII

Irish Agglomeration Parameters

Technical Note Application development
Transport Infrastructure Ireland

Agglomeration

An Roinn Iompair, Turasóireachta agus Spóirt
Department of Transport, Tourism and Sport

Planning Land Use and Transport – Outlook 2040

Tomás Campbell and Alan Scarlett
Department of Transport, Tourism and Sport

IGTIS Annual Conference
14 June 2018

Data Sharing

AECOM TII

N4 / N7 Corridor Study

Feb 2017

Corridor Studies

TII Publications

Project Appraisal Guidelines for National Roads Unit 1.0 - Introduction

PE-PAIG-02009
October 2016

PE Planning & Evaluation Technical

Project Appraisal Guidelines

Transport Research & Information Note

Impact of Improvements in the Road Network on the Accessibility & Economic Potential of Counties, Urban Areas, Gateways & Hubs

March 2018

Transport Research

TII

TRANSPORT INFRASTRUCTURE IRELAND

NATIONAL ROADS NETWORK INDICATORS 2017

Indicators Report

National Roads 2040

TII AECOM TII

NR 2040

National Roads Policy



*NTpM Application
Example – NR2040*

4