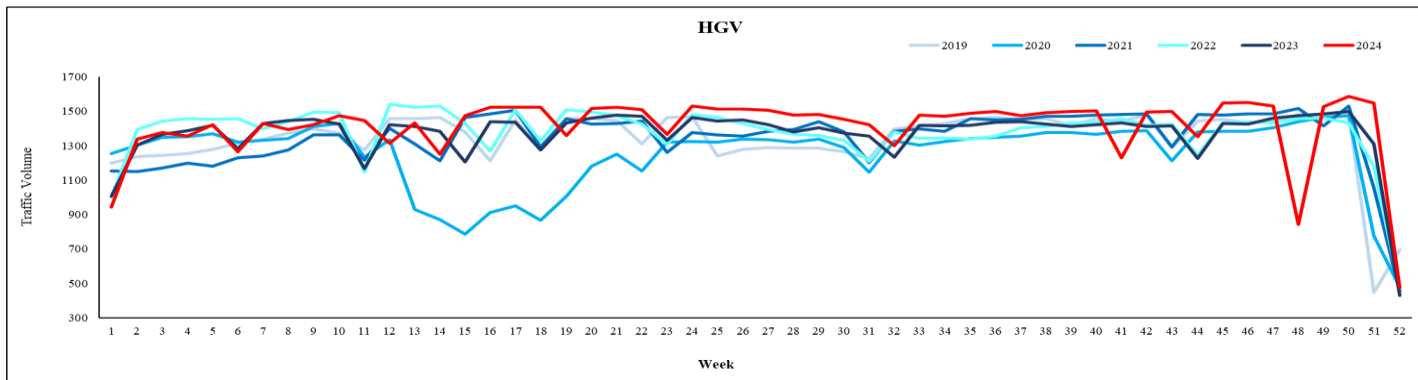
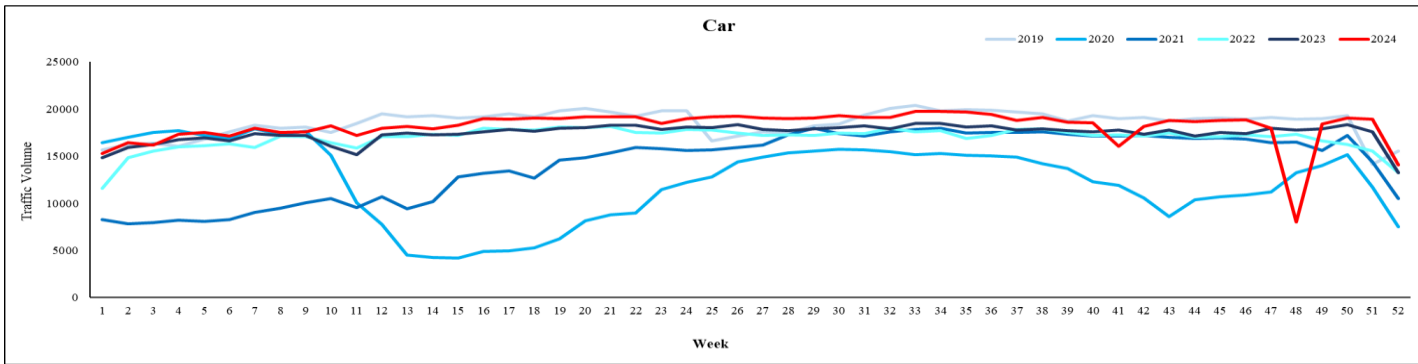
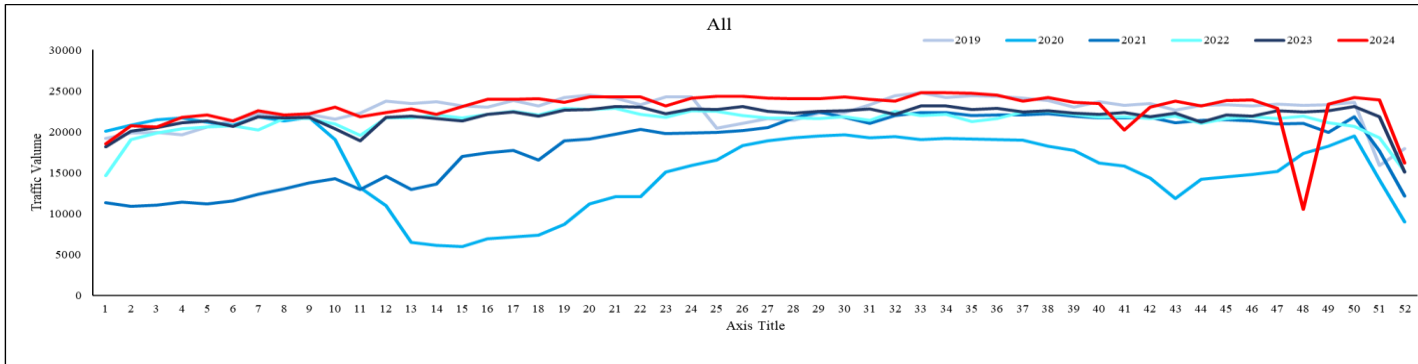


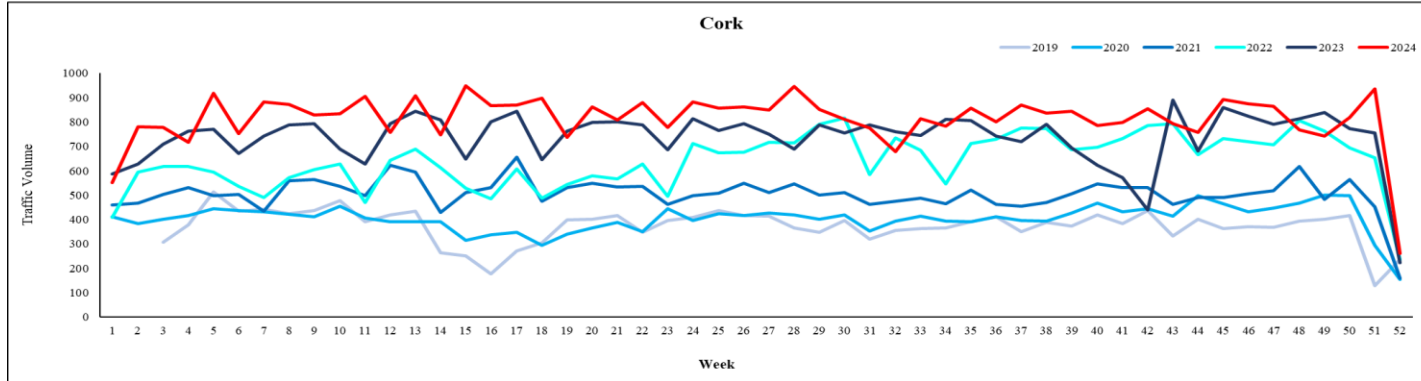
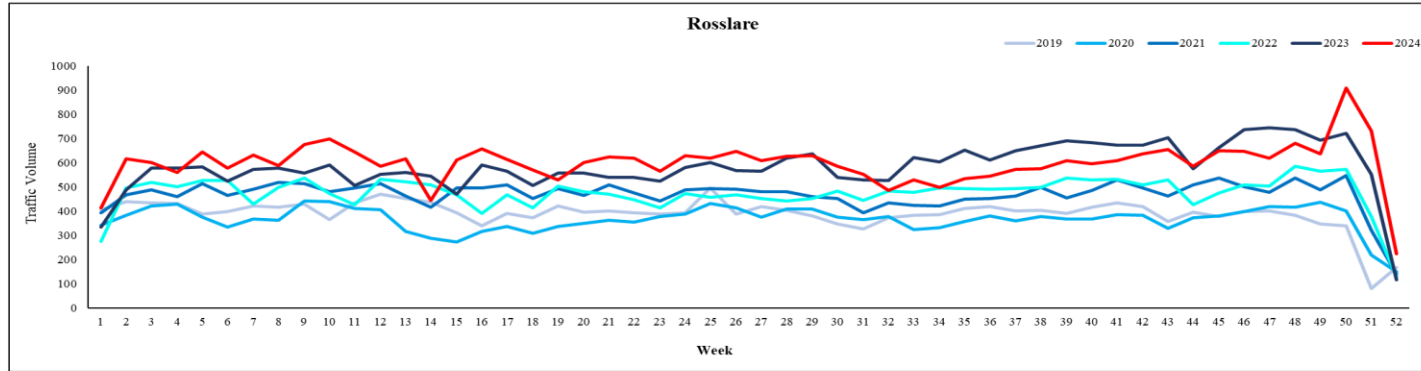
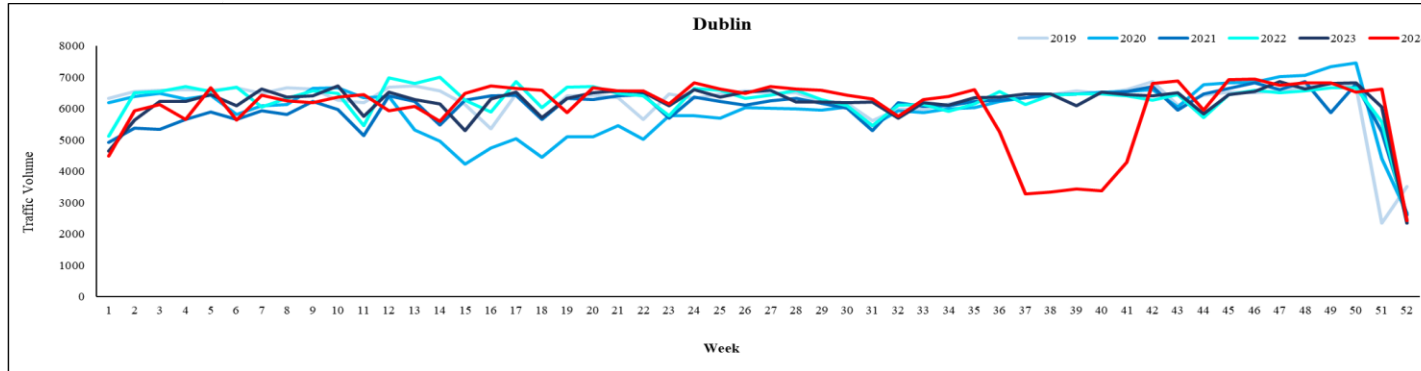
# Traffic Dashboard | Comparison 2019 to 2024



	Last week's average traffic volume					
	2024	% change in 2024 relative to				
		2019	2020	2021	2022	2023
All	16,158	-10%	+80%	+33%	+7%	+7%
Car	14,082	-10%	+88%	+34%	+6%	+6%
HGV	475	-32%	-1%	+4%	+1%	+10%

- These graphs have been prepared using data (available at [trafficdata.tii.ie](https://trafficdata.tii.ie)) from all traffic counters installed on the national road network. The 'Traffic Volume' represents the sum of traffic volumes, from all counters, divided by the number of traffic counting sites.
- These graphs represent the average daily traffic volume per week for All traffic, Cars and HGVs (Articulated and Rigid) for 2024, 2023, 2022, 2021, 2020 and 2019.
- Please note that several traffic counters lost traffic count data between June and August 2019. Consequently, the traffic counts for that period are likely to vary than what is shown on the graphs.
- Up to date daily traffic numbers and trends over the year can be found in the link below (updated daily):  
<https://www.tii.ie/roads-tolling/operations-and-maintenance/traffic-count-data/covid-traffic-patterns/>
- Where data gaps occur at an individual site or multiple sites due to technical reasons or site activities, data may be estimated. If data is not estimated, the graphs may show a minor anomaly for the affected date or dates.

# HGV Port Dashboard | Comparison 2019 to 2024



	Last week's average daily traffic volume					
	2024	% change in 2024 relative to				
		2019	2020	2021	2022	2023
Dublin	2,427	-31%	-9%	-7%	0%	+3%
Rosslare	225	+34%	+50%	+61%	+75%	+92%
Cork	262	+10%	+70%	+65%	+11%	+17%

- These graphs have been prepared using data from the traffic counters at the ports in Dublin, Rosslare and Cork. The graphs represent the average daily traffic volume per week for articulated HGV traffic for 2024, 2023, 2022, 2021, 2020 and 2019.
- Please note that, for the Dublin Port Traffic Counter, traffic data has been impacted due to resurfacing works between the period 4<sup>th</sup> September and 11<sup>th</sup> December 2024.
- There was a 65% decrease in overall articulated HGV flow at the ports during the last week of 2024 compared to the previous week, which is associated with the Christmas/New Year period.
- At Dublin Port, the shares between inbound and outbound articulated-HGV traffic were 55% and 45% respectively.
- At Rosslare Port, the shares between inbound and outbound articulated-HGV traffic were 57% and 43% respectively
- At Cork Port, the shares between inbound and outbound articulated-HGV flow was nearly equal.