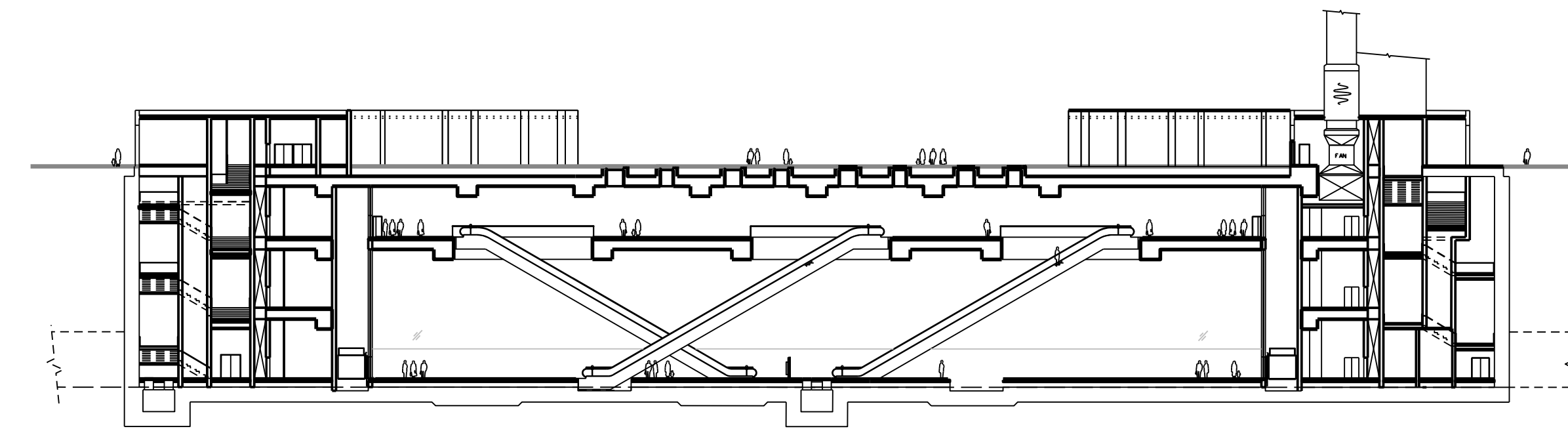
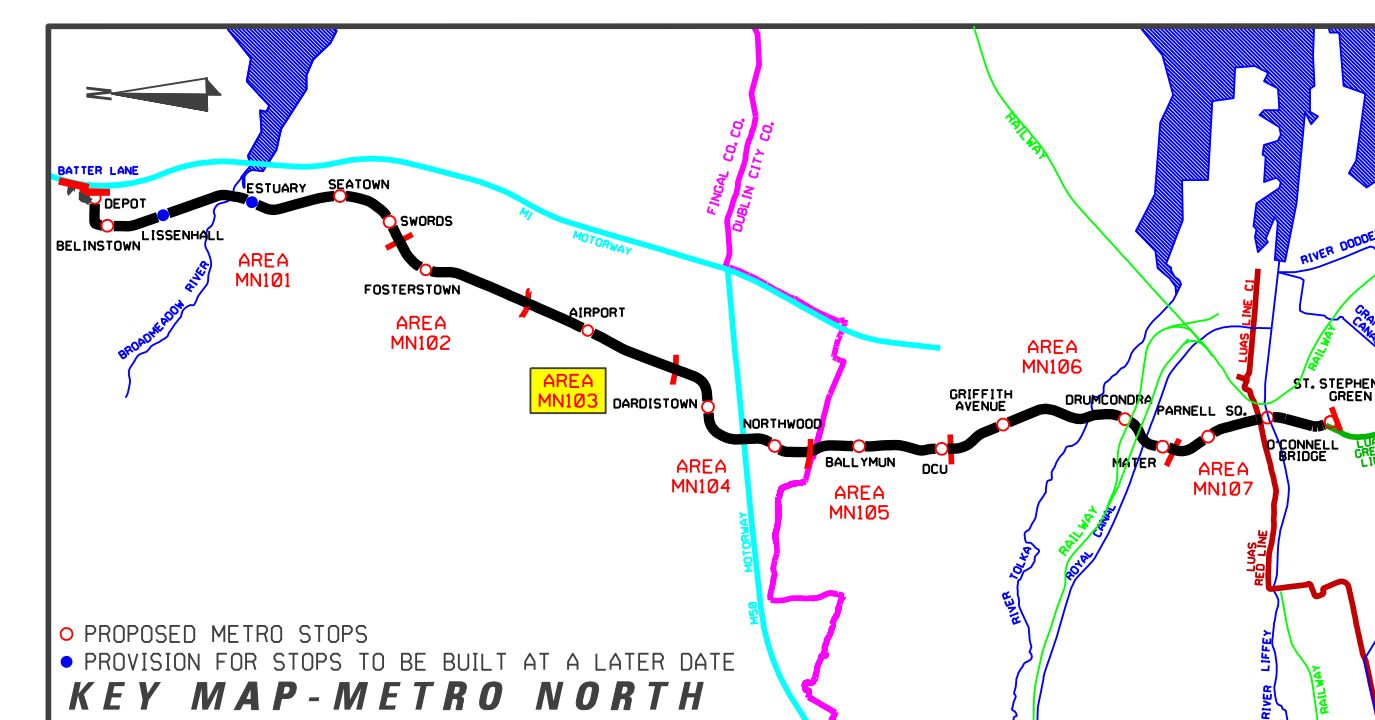


AIRPORT STOP
SCALE 1:500



AIRPORT STOP ALTERNATIVE CONFIGURATION
SCALE 1:500



REVISION	DATE	MODIFICATION	STATUS	CHECKED/APPROVED

 RPA <small>Railway Procurement Agency</small>	02/01/2008/11 Unit F402 10/1/06 Project Business Centre Parkway Tower, South Quay Phase 1/2/3 1 600 1400 Fax 1153 1 600 1401 www.rpa.co.uk	METRO
---	---	--------------

TITLE:
RAILWAY WORKS
LINE MN - STRUCTURES
AIRPORT STOP - ALTERNATIVE SECTIONS

PREPARED: RPA OFFICE	CHECKED: GEOFFREY FEATHERSTONE
SCALE: 1:500	APPROVED: RORY O'CONNOR
DATE: AUGUST 2008	

AREA NO. 103	PLAN NO. MN-ST 103 B-C6	SUBJECT: RAIL ORDER
------------------------	-----------------------------------	-------------------------------

Copyright Railway Procurement Agency
 This drawing is confidential and the copyright is owned by the RPA. This drawing must not be either loaned,
 copied or otherwise reproduced in whole or in part or used for any purpose without the prior permission of the RPA.
 All U.S. data used for plans is generated from U.S. digital data and are printed under Distance Survey permit no. D.S. 8817.

INTERNAL DOCUMENT NUMBER	STAGE	LINE	CONTRACT	ELEMENT	DRW NO.	DRW REV.
	L	MN	000	T0	103006	A