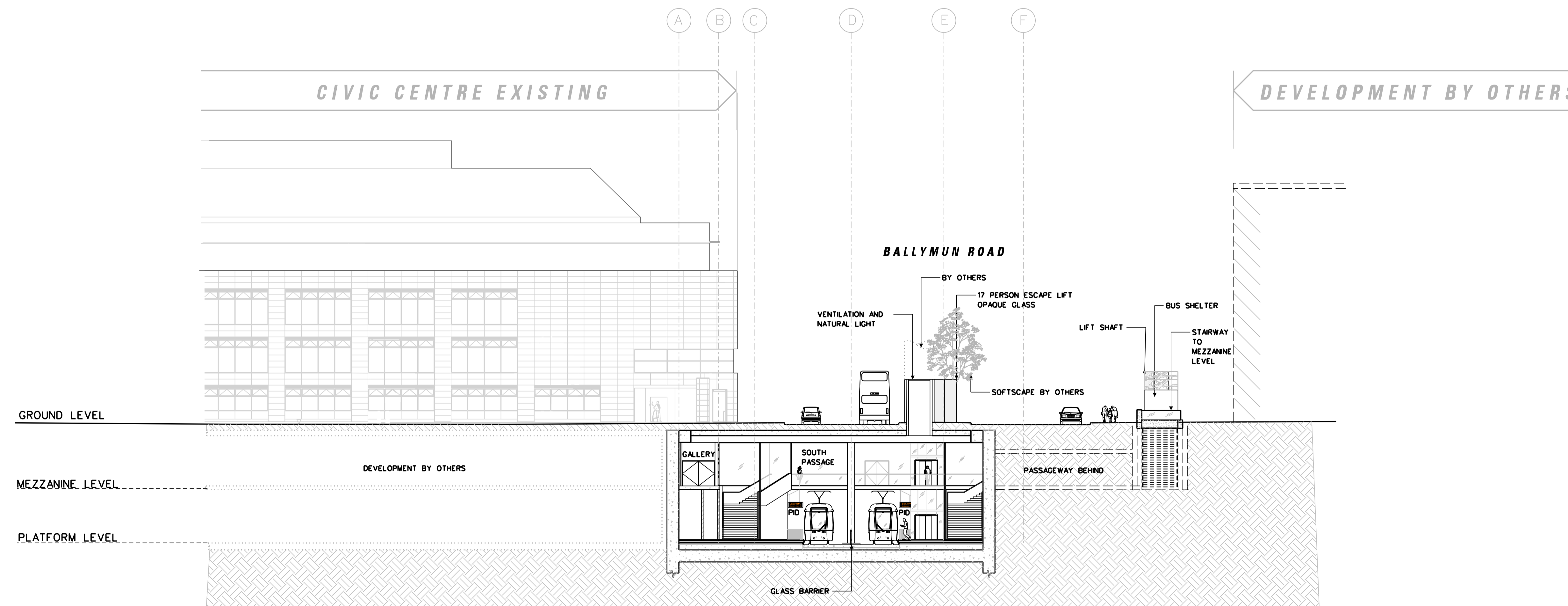


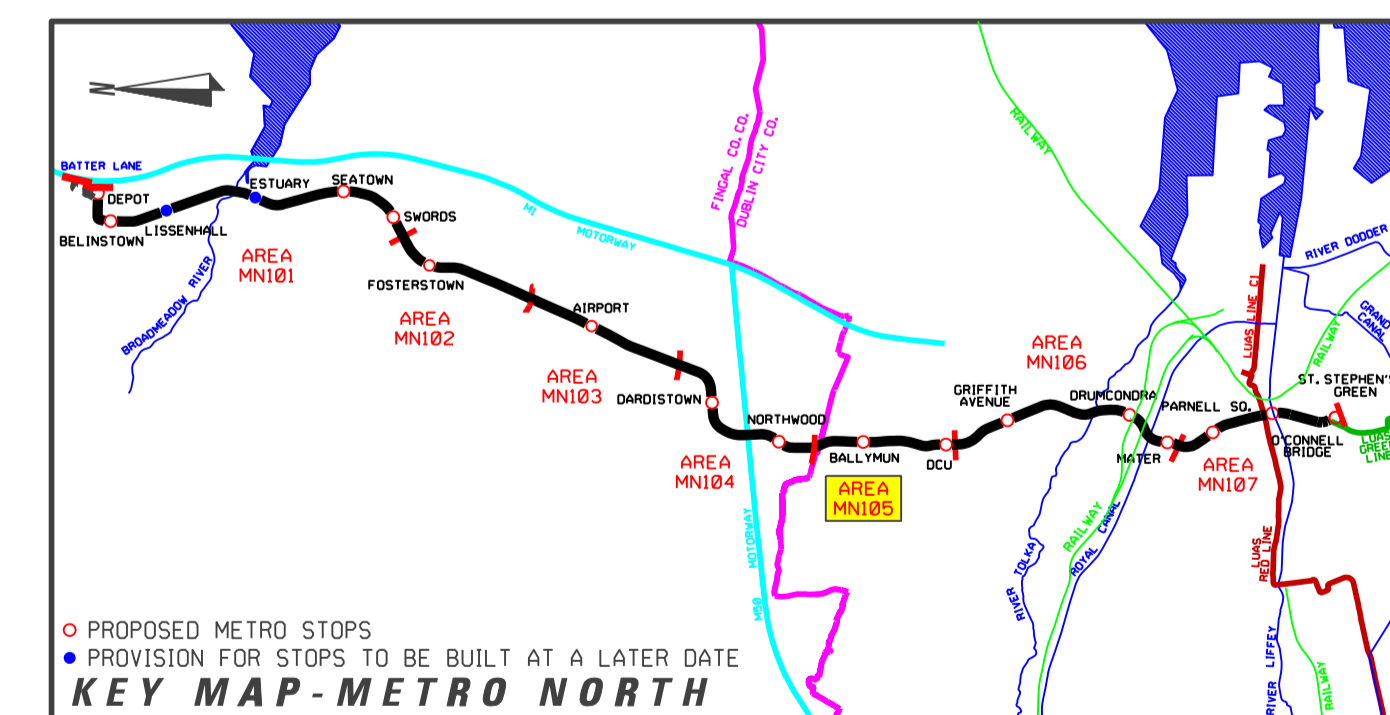
**LONGITUDINAL SECTION A-A**  
SCALE 1:200



**CROSS SECTION B-B**  
SCALE 1:200

**STATION BOX**

LEGEND			
	GRANITE		EXISTING TREE
	GRANITE SETTS		EXISTING TREE REMOVED
	DETERRENT PAVING		NEW TREE
	EXISTING KERB REMOVED		EDGE PLANTING
	EXISTING BUILDING LINE		Tree Pit
	STRUCTURES TO BE REMOVED		HEDGE
	SWEEP PATH EDGE		LOW LYING GROUND COVER
	POLE SUPPORT		GRASS AREA
	DIRECTION OF TRAFFIC FLOW		PLATFORM - GRANITE SLABS



REVISION	DATE	MODIFICATION	STATUS	CHECKED/APPROVED

	Client/Project: Dublin Transport Dublin Bus Dublin & Ireland Phone: +353 1 688 1400 Fax: +353 1 688 1401 www.rpa.ie	
	Railway Procurement Agency	

TITLE:  
**RAILWAY WORKS**  
 LINE MN - STRUCTURES  
 BALLYMUN STOP - SECTIONS A-A & B-B

PREPARED: RPA OFFICE	CHECKED: GEOFFREY FEATHERSTONE
SCALE: 1:200	APPROVED: RORY O'CONNOR
DATE: AUGUST 2008	

AREA NO. <b>105</b>	PLAN NO. <b>MN-ST 105 A-B4</b>	SUBJECT: <b>RAIL ORDER</b>
------------------------	-----------------------------------	-------------------------------

**REFERENCE RELATED DRAWINGS**

FOR 1:500 PLAN DRAWING SEE RAIL ORDER PLAN No.  
 MN-RO 105 A-B1(L/MN/000/GA/105002/A)

AND ALSO SEE  
 BALLYMUN STOP - STREET LEVEL PLAN MN-ST 105 A-B1(L/MN/000/TO/105001/A)  
 BALLYMUN STOP - MEZZANINE PLAN MN-ST 105 A-B2(L/MN/000/TO/105002/A)  
 BALLYMUN STOP - PLATFORM PLAN MN-ST 105 A-B3(L/MN/000/TO/105003/A)  
 BALLYMUN STOP - SECTIONS C-C & D-D MN-ST 105 A-B5(L/MN/000/TO/105005/A)

©Copyright Railway Procurement Agency  
 This drawing is confidential and the copyright in it is owned by the RPA. This drawing must not be either issued, copied or otherwise reproduced or included in any report or used for any purpose without the prior permission of the RPA.  
 All U.S. data used for plans is generated from D.E. digital/land maps and are printed under Ordnance Survey patent no. 0.5.8677

INTERNAL DOCUMENT NUMBER	STAGE	LINE	CONTRACT	ELEMENT	OPW NO.	DRW REV.
	L	MN	000	TO	105004	A