

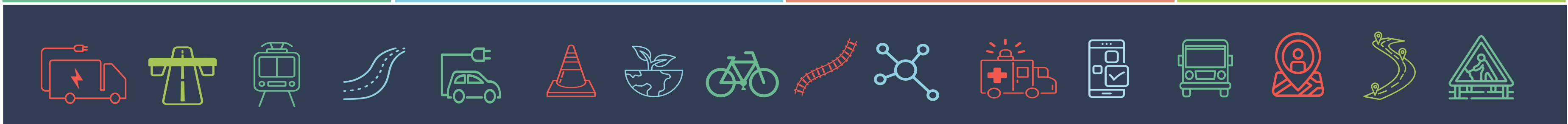
NATIONAL ROADS AND GREENWAYS CONFERENCE 2023

Thursday 28th and Friday 29th September 2023



NATIONAL ROADS AND GREENWAYS CONFERENCE 2023

Thursday 28th and Friday 29th September 2023



Project Considerations for Integrated Mobility

N/M20 Cork to Limerick Case Study

- Transport & Climate Policy Evolution
- N/M20 Project Background
- Integrated Transport Solution
- Active Travel
- Public Transport
- Mobility Hubs
- Conclusion - Integrated Mobility project



Rialtas na hÉireann
Government of Ireland

CLIMATE ACTION PLAN 2023 CAP23

Changing Ireland for the Better



Tionscadal Éireann Project Ireland 2040



Rialtas na hÉireann
Government of Ireland

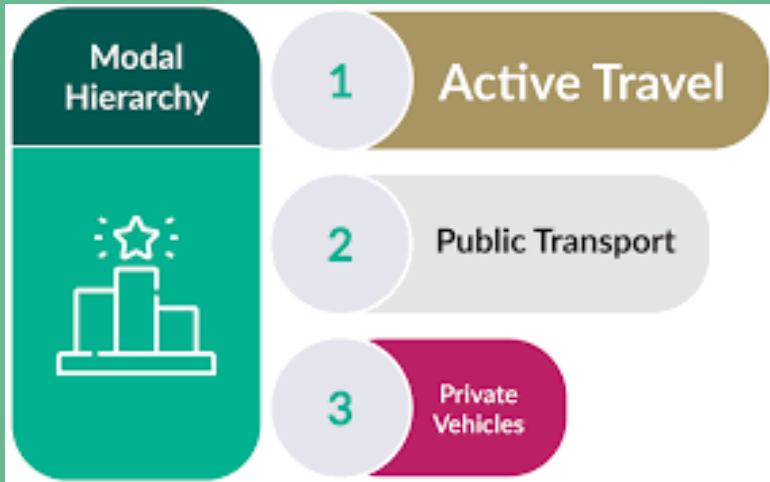
Five Cities Demand Management Study Executive Summary



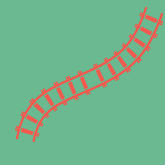
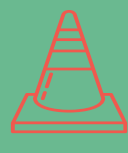
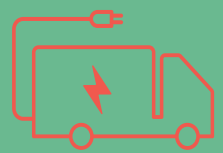
An Roinn Iompair
Department of Transport

Transport Appraisal Framework

Appraisal Guidelines for Capital Investments in Transport



NR 20 40 National Roads 2040



Project Considerations for Integrated Mobility

Transport & Climate Policy Evolution

- Climate Action Plan & Carbon Act
- Project Ireland 2040
- Sustainable Mobility
- Five Cities Demand Management / Project BRUCE
- NIFTI / TAF
- NR2040
- AISRR / Bus Connects
- National Cycle Network
- Great change brings great opportunity



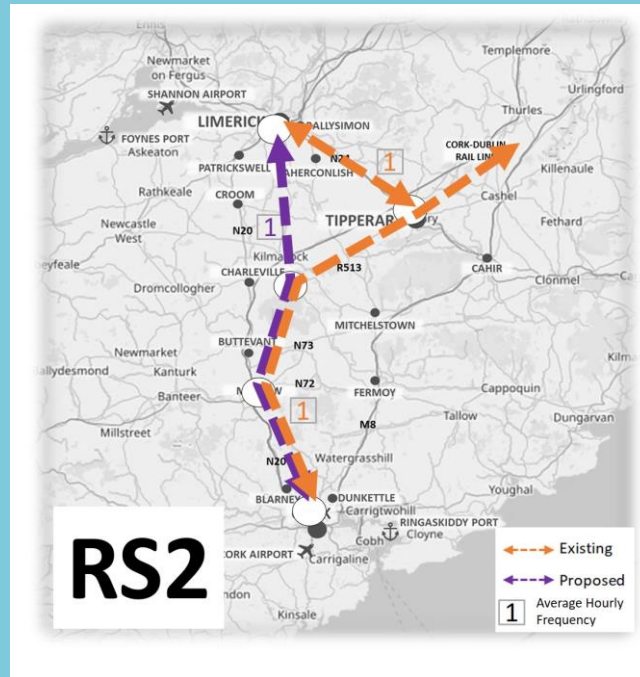
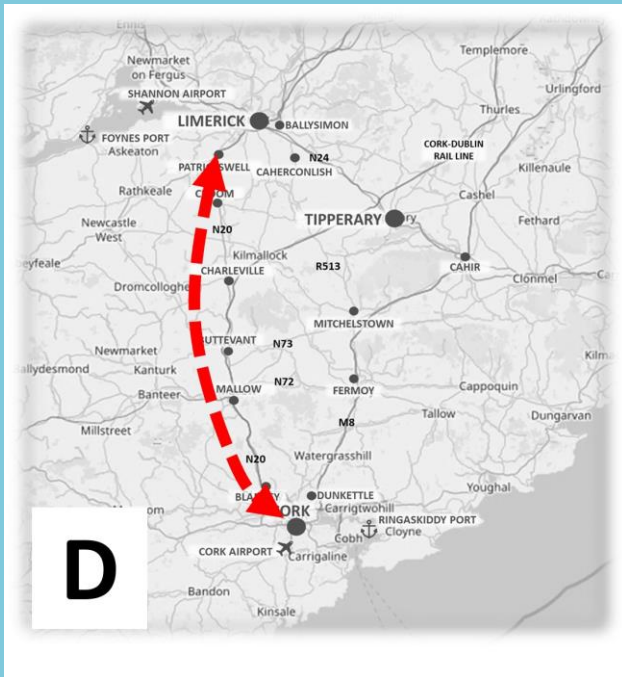


M20 Cork-Limerick Motorway Scheme

transport21
progress in motion

Comhairle Contae Chorcaí
Cork County Council

M20 Cork to Limerick



Tionscadal Éireann Project Ireland 2040

 An Roinn Iompair
Department of Transport

 **TII**
Bonneagar Iompair Éireann
Transport Infrastructure Ireland

 Comhairle Cathrach
& Contae Luimnigh
Limerick City
& County Council

 Comhairle Cathrach Chorcaí
Cork City Council

 **Cork
County Council**
Comhairle Contae Chorcaí



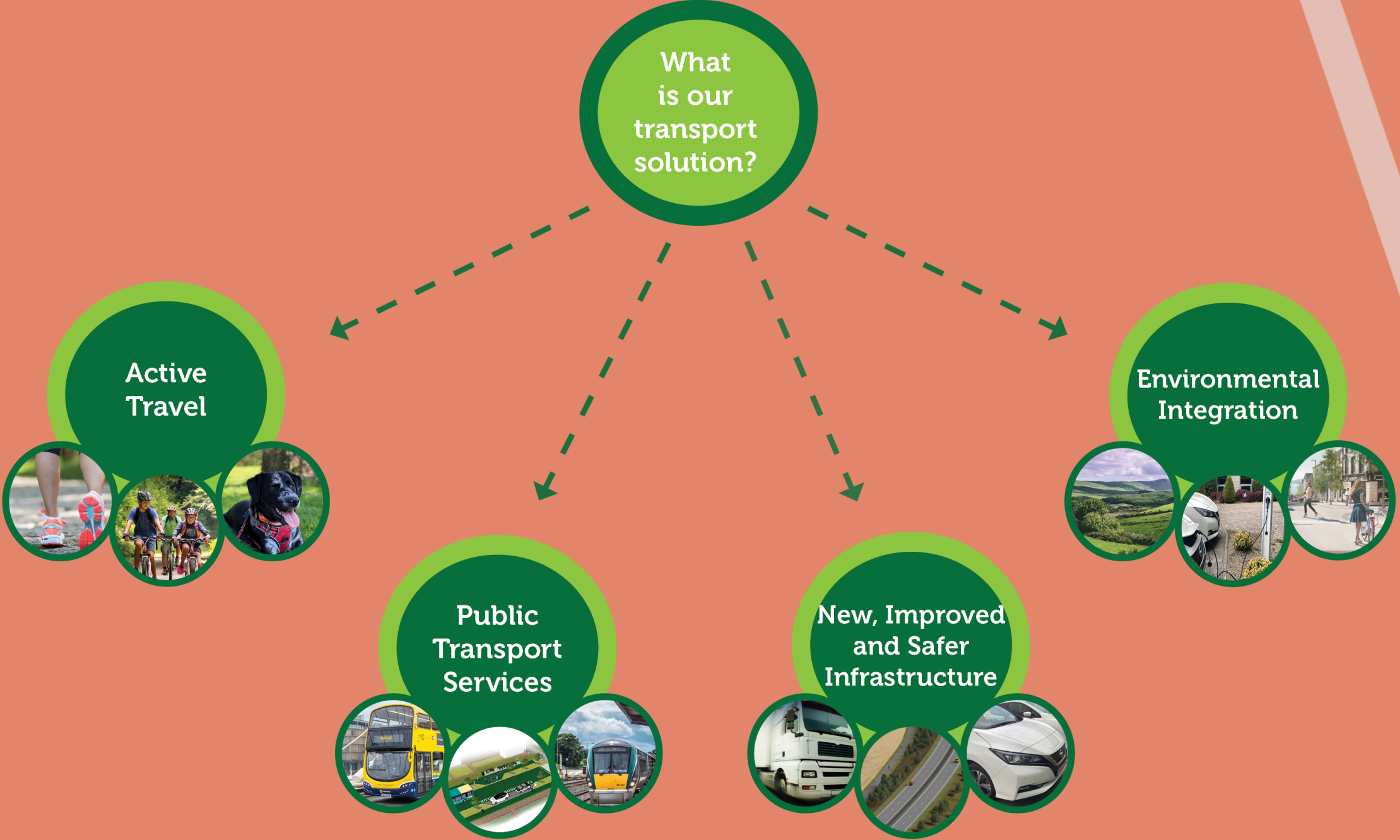
Project Considerations for Integrated Mobility

N/M20 Cork to Limerick – Background

- 80km intercity connectivity
- M20 Cork - Limerick Motorway Scheme withdrawn from planning during oral hearing in 2011
- N/M20 project recommenced Phases 1-4 in 2019 following Project Ireland 2040
- Project objective to improve connectivity between Cork & Limerick and improve safety



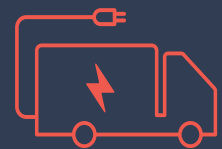
Our Transport Solution

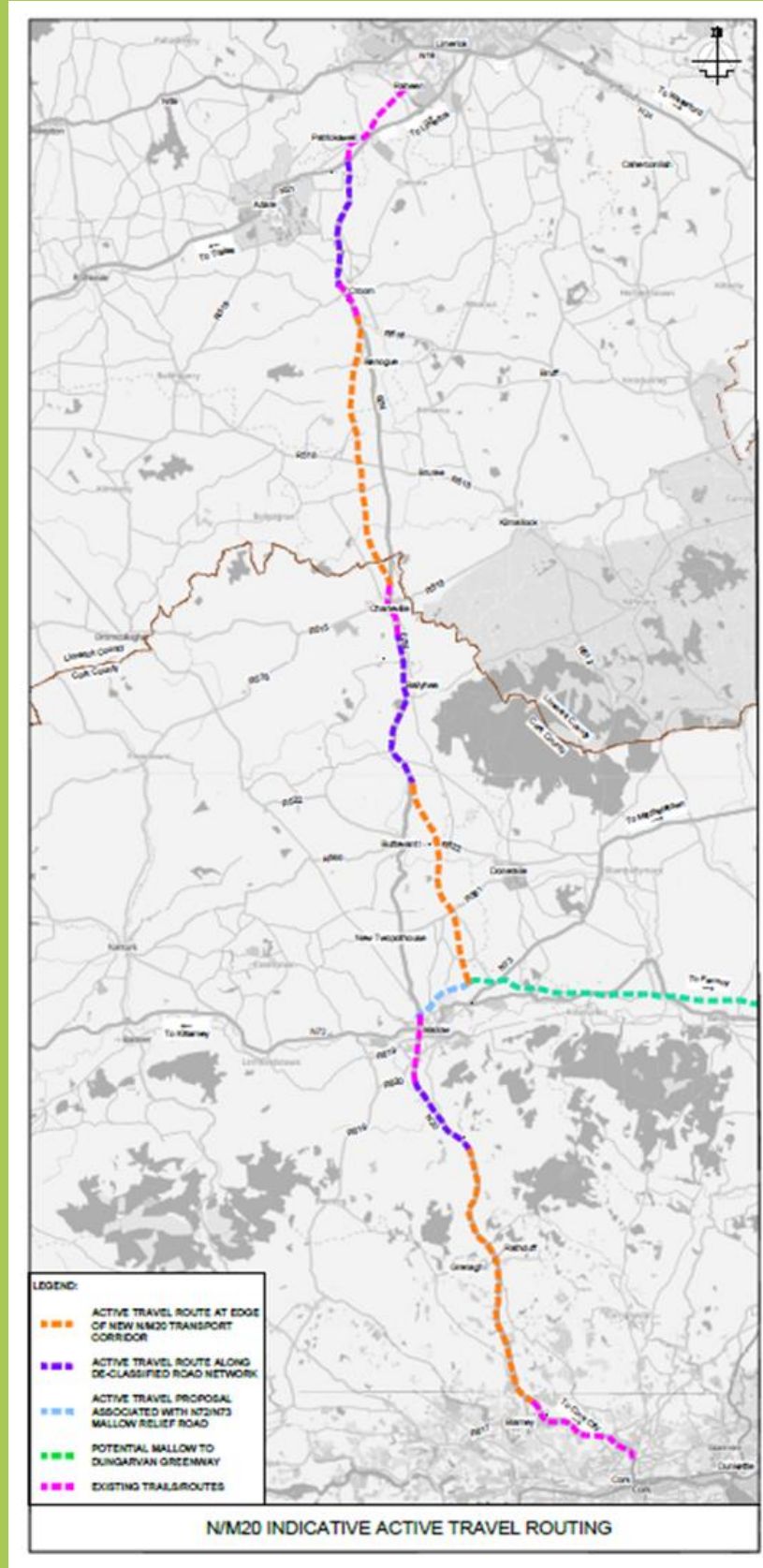


Project Considerations for Integrated Mobility

Integrated Transport Solution

- Consideration of all modes from Phase 1
- Active Travel
- Public Transport (Rail and Bus)
- New, Improved and Safer Infrastructure
- Mobility Hubs
- Environmental Integration





Project Considerations for Integrated Mobility

Active Travel

- *Minimal active travel facilities along existing N20 leading to car dependency*
- *Connecting communities along corridor*
- *Integrate with nearby Greenway projects*
- *Repurpose existing N20 where possible or integrate with offline sections of N/M20*
- *Focus on access to school, work & shops*

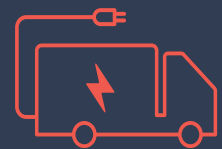




Project Considerations for Integrated Mobility

Public Transport

- Rail options taken through phases 1 & 2 with recommendation for new no change direct service via Limerick Junction
- Bus services enhanced with express intercity service, improved journey times / reliability for inter urban services and opportunities for new service between mobility hubs and mobility hubs to community shuttle service



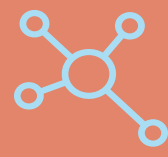
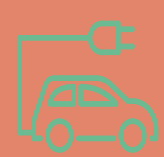
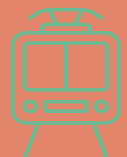
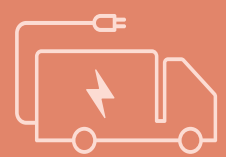
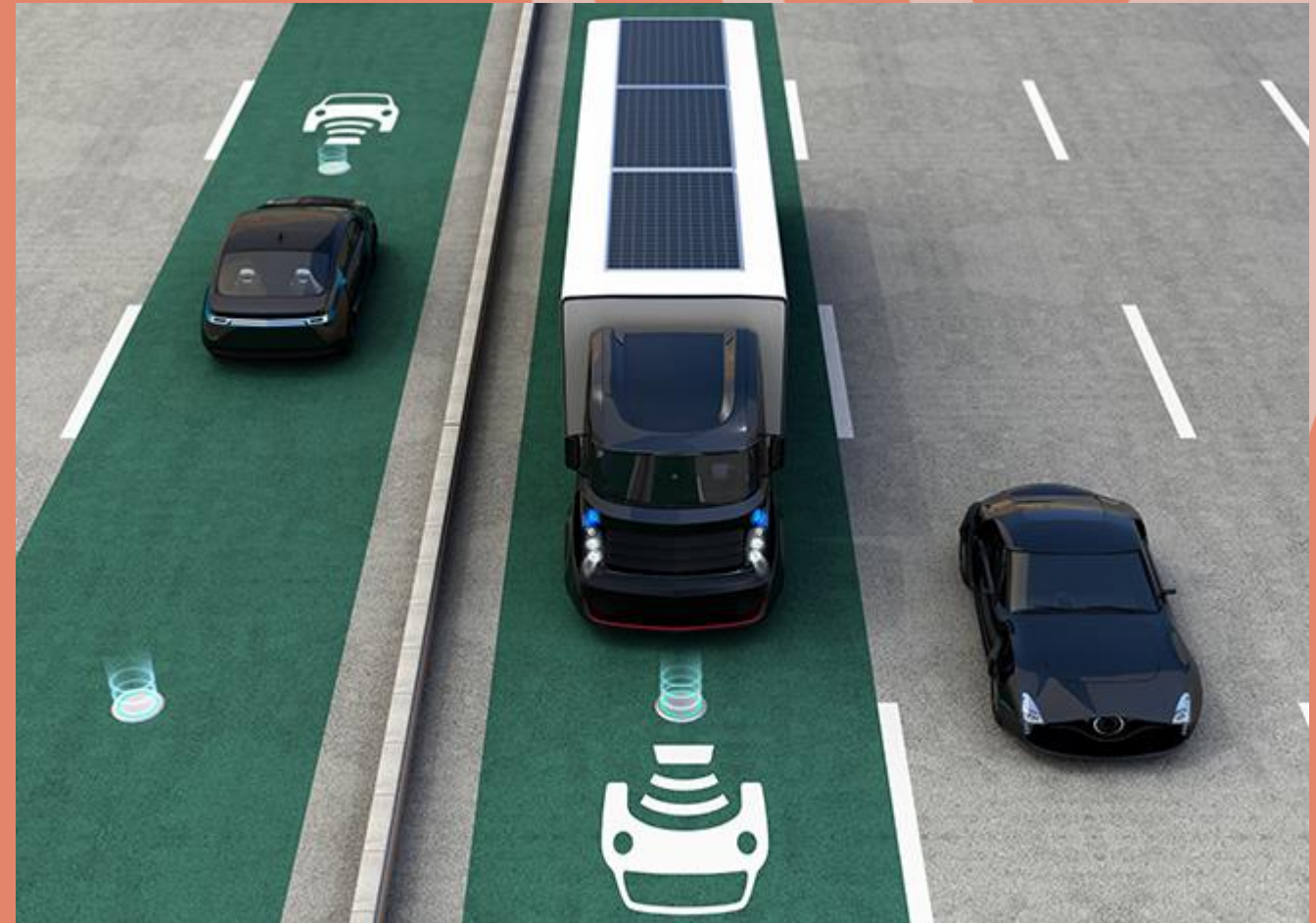


Project Considerations for Integrated Mobility

Mobility Hubs

- Located near junctions & communities
- Park and Ride (Bus & Rail)
- Park and Share
- Active travel connectivity to community
- EV charging (on route and long term)
- HGV rest area & secure overnight parking





Project Considerations for Integrated Mobility

Conclusion – Integrated Mobility project

- Consider all modes of transport from the start with integration of modes the objective where possible
- Don't be confined to past solutions as mobility solutions are being redefined
- Bring various agencies / providers together
- Integrated transport mobility will benefit project through planning process



Jari Howard

N/M20 Project Coordinator

N/M20 Project Office

www.corklimerick.ie

info@corklimerick.ie

061 973730

