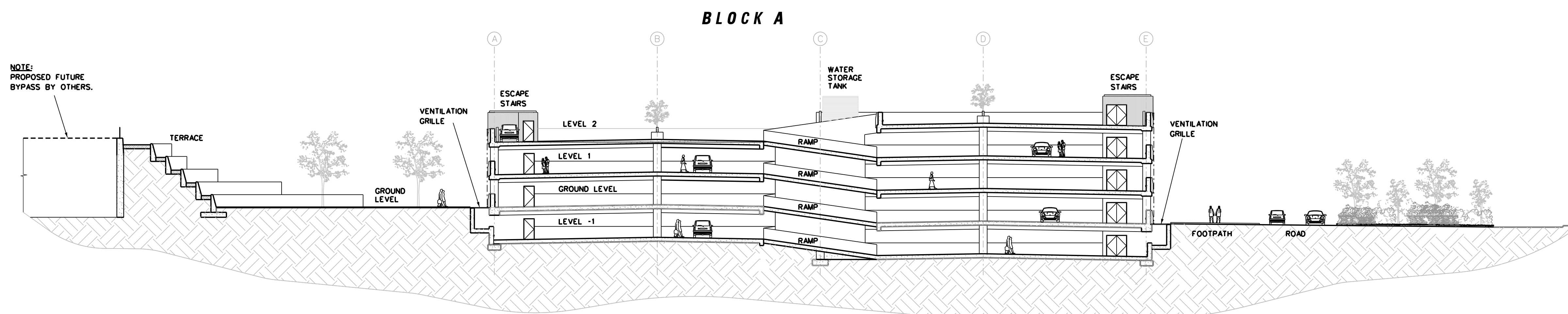
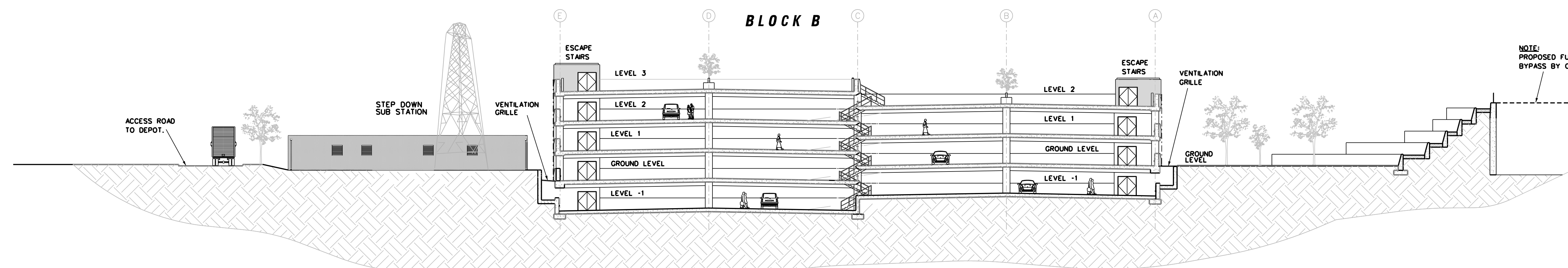


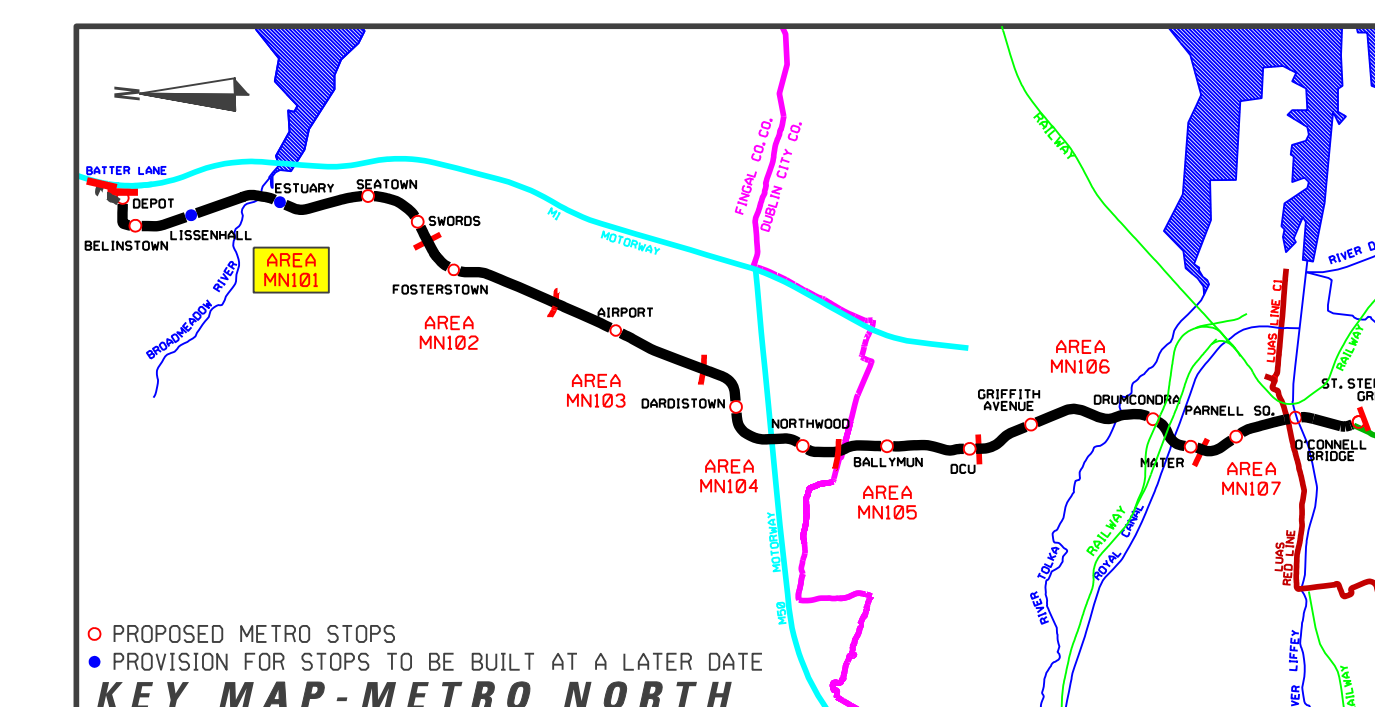
**MULTI STOREY CAR PARK - SECTION A-A**  
SCALE 1:250



**MULTI STOREY CAR PARK - SECTION B-B**  
SCALE 1:250



**MULTI STOREY CAR PARK - SECTION C-C**  
SCALE 1:250



| REVISION | DATE | MODIFICATION | STATUS | CHECKED/APPROVED |
|----------|------|--------------|--------|------------------|
|          |      |              |        |                  |

|  |   |
|--|---|
|  |   |
|  | <p><b>RAILWAY WORKS</b><br/>LINE MN - STRUCTURES<br/>MULTI STOREY CAR PARK - SECTIONS</p> |

|                      |                                |
|----------------------|--------------------------------|
| PREPARED: RPA OFFICE | CHECKED: GEOFFREY FEATHERSTONE |
| SCALE: 1:250         | APPROVED: RORY O'CONNOR        |
| DATE: AUGUST 2008    |                                |

|                     |                                |                            |
|---------------------|--------------------------------|----------------------------|
| AREA NO. <b>101</b> | PLAN NO. <b>MN-MS 101 B-C7</b> | SUBJECT: <b>RAIL ORDER</b> |
|---------------------|--------------------------------|----------------------------|

**REFERENCE RELATED DRAWINGS**

FOR 1:500 PLAN DRAWING SEE RAIL ORDER PLAN No. MN-RO 101 B-C(L/MN/000/GA/101003/A)

AND ALSO SEE

|                                      |                                      |
|--------------------------------------|--------------------------------------|
| MULTI STOREY CAR PARK - LEVEL -1     | MN-MS 101 B-C1(L/MN/000/PK/101001/A) |
| MULTI STOREY CAR PARK - GROUND LEVEL | MN-MS 101 B-C2(L/MN/000/PK/101002/A) |
| MULTI STOREY CAR PARK - LEVEL 1      | MN-MS 101 B-C3(L/MN/000/PK/101003/A) |
| MULTI STOREY CAR PARK - LEVEL 2      | MN-MS 101 B-C4(L/MN/000/PK/101004/A) |
| MULTI STOREY CAR PARK - LEVEL 3      | MN-MS 101 B-C5(L/MN/000/PK/101005/A) |
| MULTI STOREY CAR PARK - ELEVATIONS   | MN-MS 101 B-C6(L/MN/000/PK/101006/A) |

Copyright Railway Procurement Agency  
This drawing is confidential and the copyright is reserved by the RPA. This drawing must not be either loaned, copied or otherwise reproduced in whole or in part or used for any purpose without the prior permission of the RPA.  
All U.S. data used for plans is generated from U.S. digital data and are printed under Distance Survey permit no. D.S. 8817

|                          |       |      |          |         |         |          |
|--------------------------|-------|------|----------|---------|---------|----------|
| INTERNAL DOCUMENT NUMBER | STAGE | LINE | CONTRACT | ELEMENT | DRW NO. | DRW REV. |
|                          | L     | MN   | 000      | PK      | 101007  | A        |