

Applying a gender lens to sustainable transport

Implementation insights for genuine
modal shift

Presenters:

Rachel Cahill, TII Director Executive Office

Eimear Fox, TII Senior Landscape Architect



Coming to a gender lens for transport infrastructure projects



Story begins at the ITF Summit 2019

Tii publishes Travelling in a Woman's Shoes: Understanding Women's travel needs in Ireland to inform the future of sustainable transport policy and design (2020)

Tii publishes a Technical Guidance: Applying a Gender lens to TII Public Transport Projects (2021)

From 2020, TII applies a gender lens to key projects including light rail extension for Luas Finglas

Applying a gender lens: from research to practice

- Implementing a gender lens in transport infrastructure projects is rare.
- Focus on the **process** of implementation, including enablers, good practices and efforts to scale up.
- TII's 'look back' engaged stakeholders who applied a gender lens to Luas Finglas.



High level observations

- This work opens up strategic and nuanced approaches to **real** modal shift.
- Gender disaggregated data challenges traditional methods of data collection. It contributes to impactful, high-quality and representative transport data.
- Gender sensitive practices create wider opportunities.
- There are many possibilities for gender sensitive planning and design.



Case study

Luas Finglas light rail extension

Key moments in this project:

- Collecting Public Life surveys for proposed transport corridor
- Talking with local women in the area
- Communicating women's stories and data to senior leadership
- Designing the transport corridor to meet local needs



Case study

Informed design choices and a new baseline

- Support social life
- Enhance pedestrian safety
- Support care-related mobility

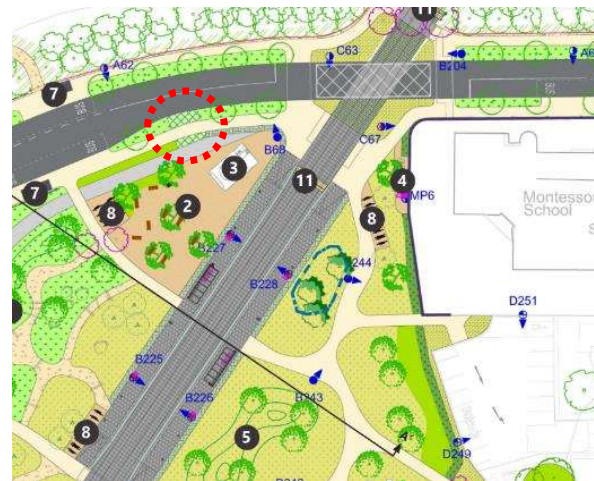
- A new Urban Integration Report (UIR) describing social value.
- A new baseline of Public Life surveys and UIR



Case study

Support Social Interaction

- Foster social interaction by including drop curbs and paved space for a coffee truck at a tram stop.

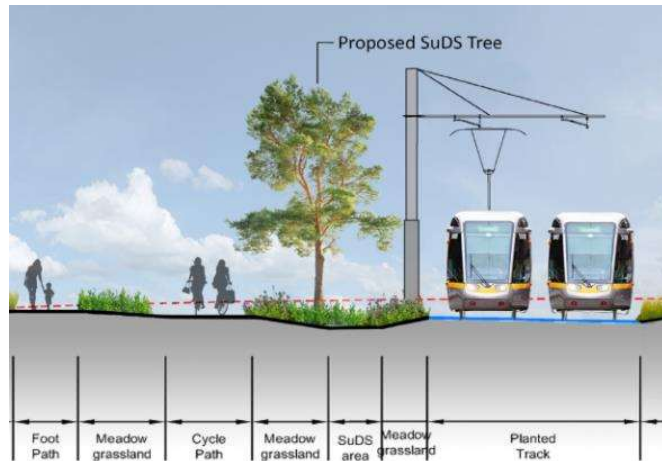


- Open up social life and a sense of safety at the stop, reduce social isolation.

Case study

Enhance pedestrian safety

- Separate cycling and walking routes
- Prioritising pedestrian safety



Case study

Support care-related mobility

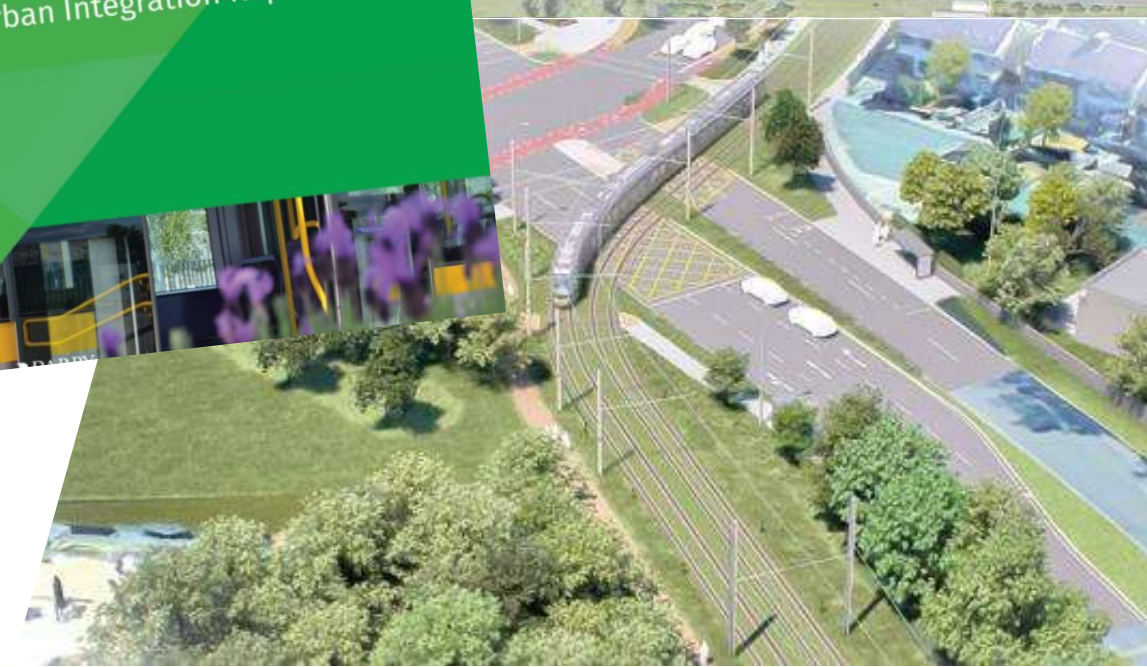
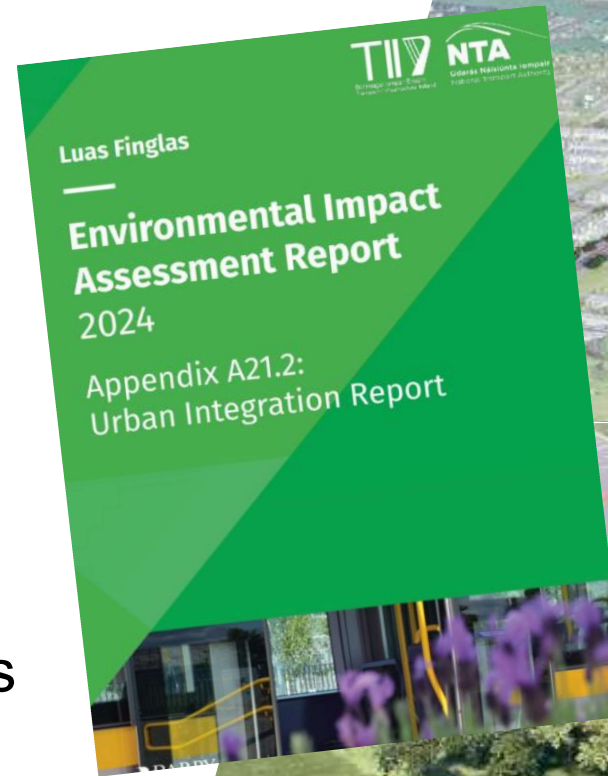
- Street re-imagined
- Encourage early childhood independent mobility



Case study

Urban Integration Report (UIR) describing social value.

- Record design rationale
- Public Life informs outcomes
- Intent embedded for future delivery



Factors that made this work

- Senior managers committed to social equity
- Proactive work across teams
- Close stakeholder involvement and shared values
- Early, proactive maintenance discussions
- Local insight



'Design challenges are also considered, such as the **specific mobility needs and concerns of women. The Jan Gehl observation studies were used as valuable data and insights to inform the final layout of stops, ensuring that the design of public spaces and the light rail system would be safe, inclusive, and responsive to the needs of the community.'**

An Coimisiún Pleanála



Building a mandate for change

- These developments **influence** and **actualise** National Sustainable Mobility Policy.
- Travelling in a Woman's Shoes included in Ireland's National Sustainable Mobility Policy.
- This recognition has a **knock-on effect**.

Next steps in applying a gender lens

- Standardise gender-sensitive practices in project phases and documentation, with clear responsibilities
- Build new skillsets
- Develop design guidance documents
- Build strong cross-functional and agency collaboration and liaison on projects



Conclusion and Q&A

- Enriched mobility data + implementation knowledge leads to a deeper understanding of the real issues and opportunities.
- This is vital knowledge for unlocking genuine modal shift and solving car dependency in context.



Bonneagar Iompair Éireann
Transport Infrastructure Ireland

