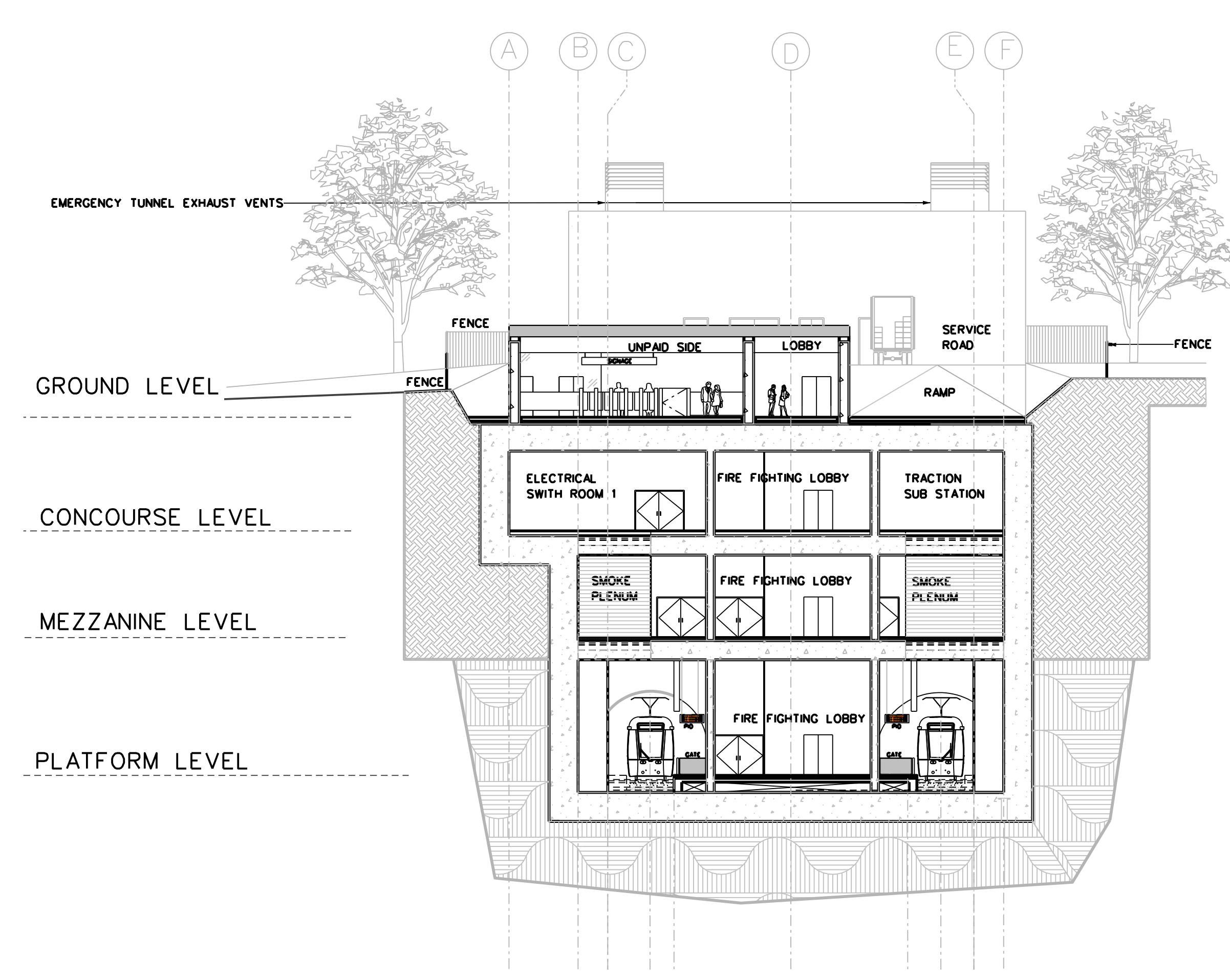
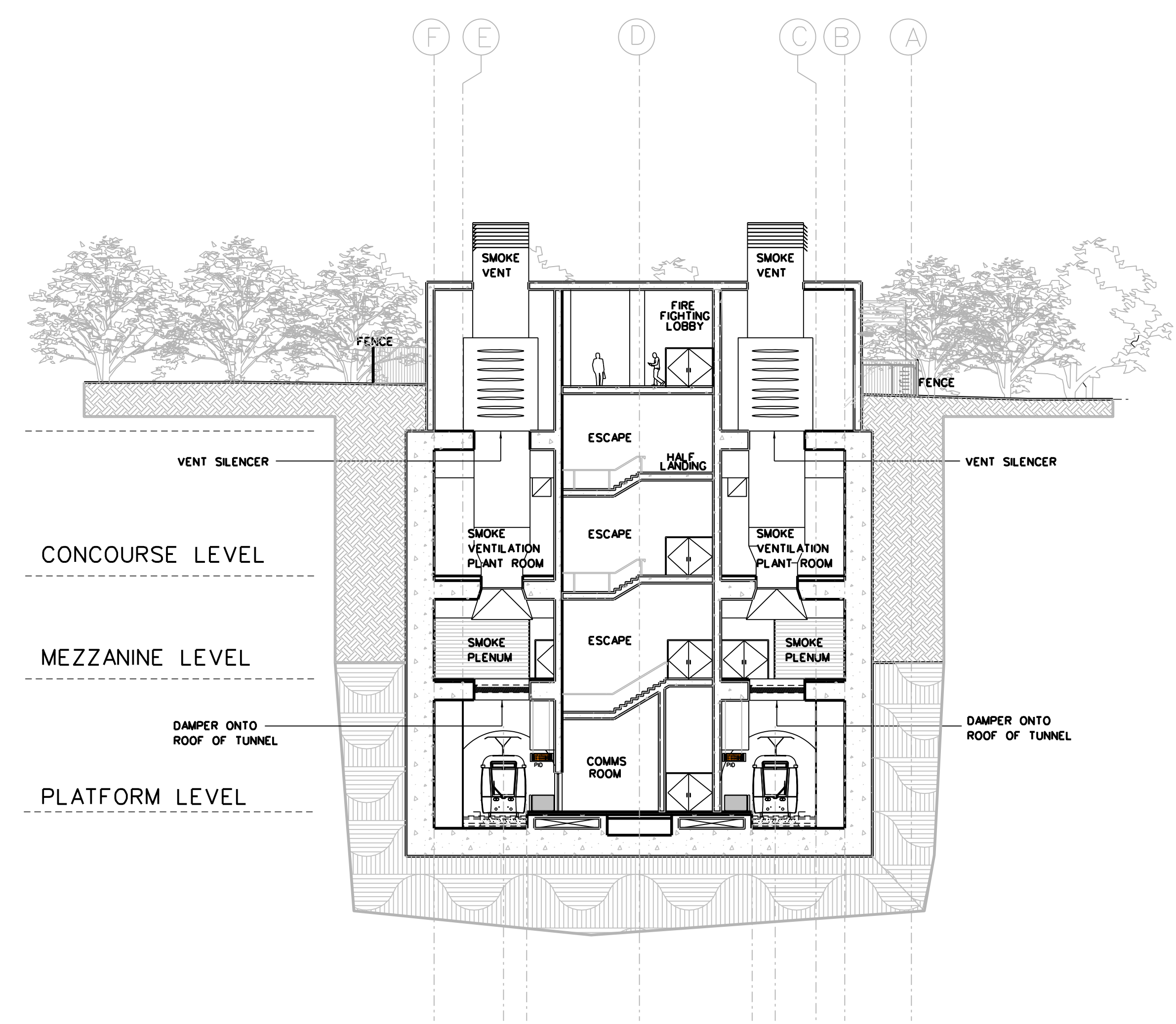


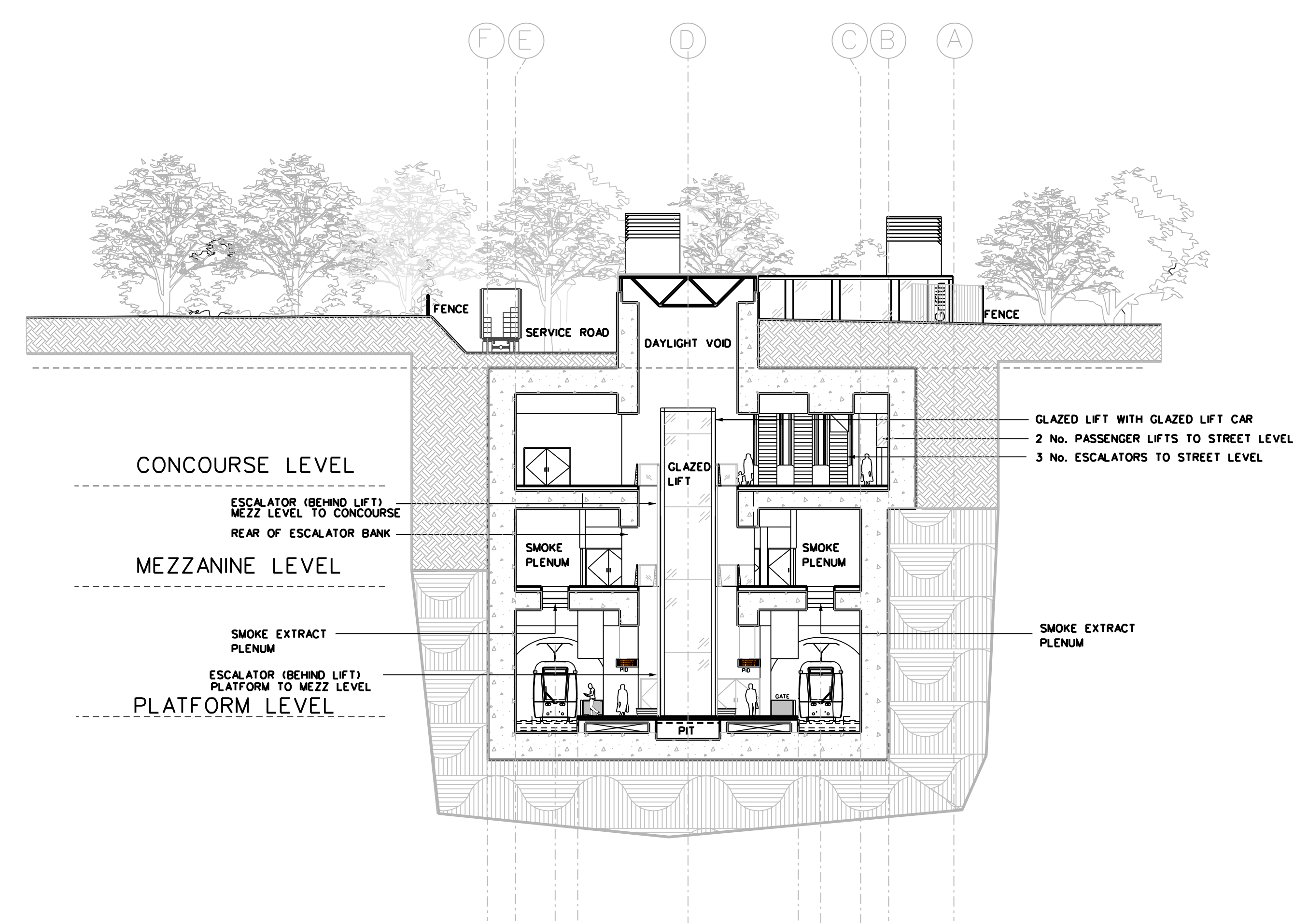
CROSS SECTIONAL ELEVATION C-C
SCALE 1:200



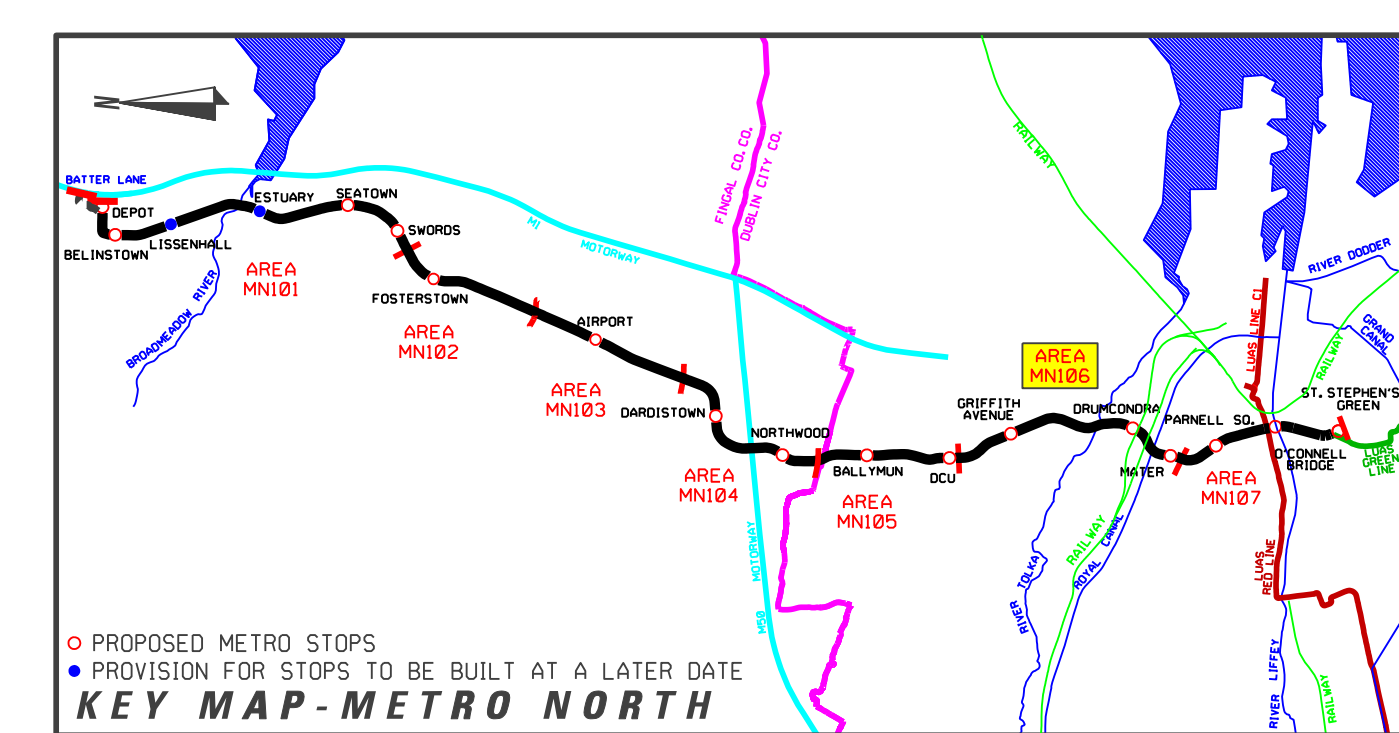
CROSS SECTIONAL ELEVATION D-D
SCALE 1:200



CROSS SECTIONAL ELEVATION E-E
SCALE 1:200



CROSS SECTIONAL ELEVATION F-F
SCALE 1:200



REVISION	DATE	MODIFICATION	STATUS	CHECKED/APPROVED



RPA
Railway Procurement Agency



TITLE:
RAILWAY WORKS
LINE MN - STRUCTURES
GRIFFITH AVENUE STOP
SECTIONS - SHEET 2 OF 2

PREPARED: RPA OFFICE	CHECKED: GEOFFREY FEATHERSTONE
SCALE: 1:200	APPROVED: ROBY O'CONNOR
DATE: AUGUST 2008	

AREA NO: 106	PLAN NO: MN-ST 106 A-B6	SUBJECT: RAIL ORDER
------------------------	-----------------------------------	-------------------------------

REFERENCE RELATED DRAWINGS

FOR 1:500 PLAN DRAWING SEE RAIL ORDER PLAN No. MN-RO 106 A-B(L/MN/000/GA/106002/A)

AND ALSO SEE

GRIFFITH AVENUE STOP - STREET LEVEL PLAN	MN-ST 106 A-B1(L/MN/000/TO/106001/A)
GRIFFITH AVENUE STOP - CONCOURSE PLAN	MN-ST 106 A-B2(L/MN/000/TO/106002/A)
GRIFFITH AVENUE STOP - MEZZANINE PLAN	MN-ST 106 A-B3(L/MN/000/TO/106003/A)
GRIFFITH AVENUE STOP - PLATFORM PLAN	MN-ST 106 A-B4(L/MN/000/TO/106004/A)
GRIFFITH AVENUE STOP - SECTIONS - SHEET 1 OF 2	MN-ST 106 A-B5(L/MN/000/TO/106005/A)
GRIFFITH AVENUE STOP - ELEVATIONS	MN-ST 106 A-B7(L/MN/000/TO/106007/A)

Copyright Railway Procurement Agency
This drawing is confidential and the copyright in it is owned by the RPA. This drawing must not be either loaned, copied or otherwise reproduced or released in any form or used for any purpose without the prior permission of the RPA.
All U.S. data used for plans is generated from U.S. digital data and was printed under Ordnance Survey permit no. 05-8817

INTERNAL DOCUMENT NUMBER	STAGE	LINE	CONTRACT	ELEMENT	OPW NO	OPW REV
	L	MN	000	TO	106006	A