



**MANY PARTS**

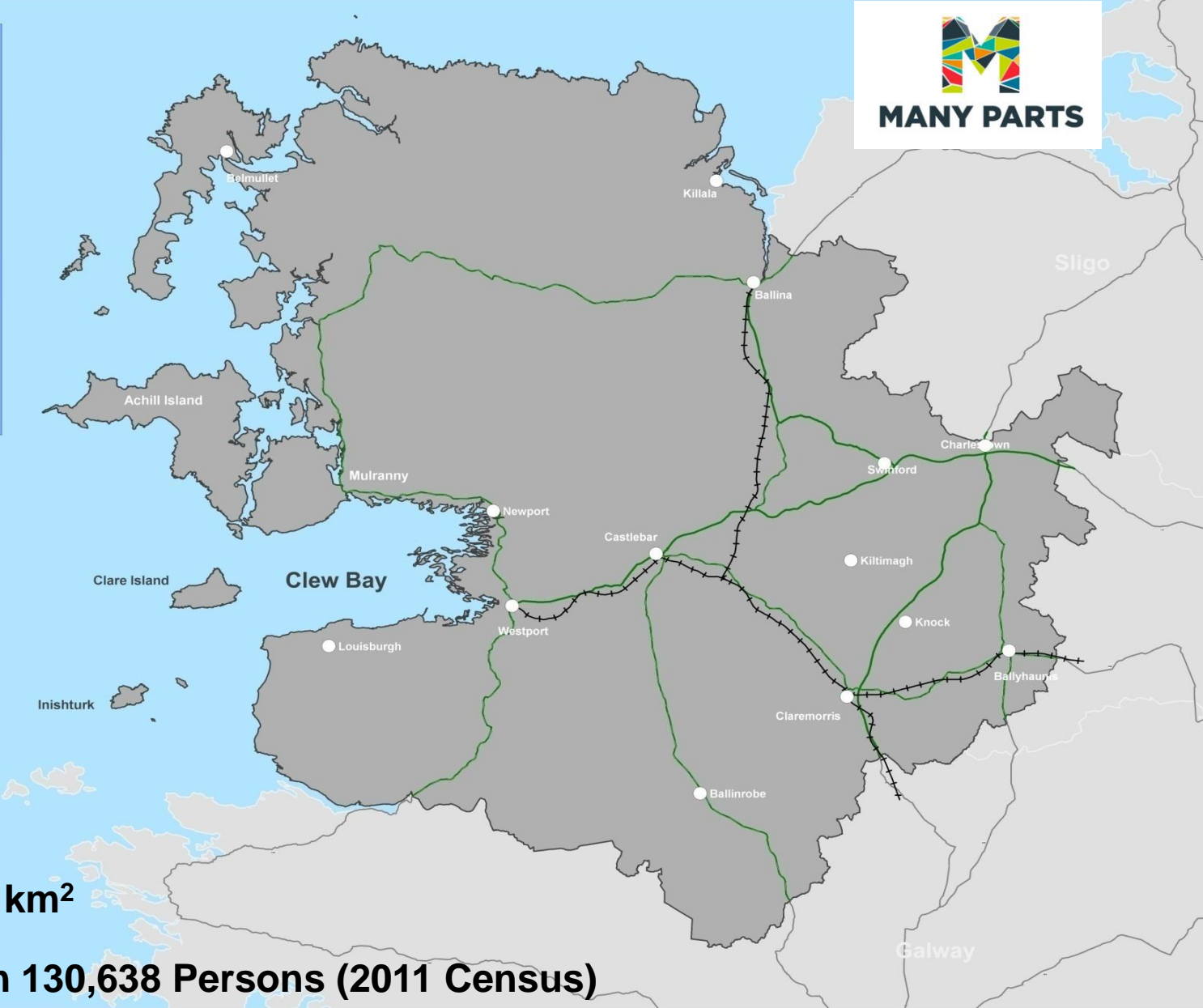
# **National Roads Authority Conference 2014**

**Peter Hynes  
Mayo Chief Executive**



# MAYO – TODAY

- FAILTE
- MAYO
- TRANSPORT
- FUTURE



- **Area 5586 km<sup>2</sup>**
- **Population 130,638 Persons (2011 Census)**



# STORY – TODAY

- **VIBRANT**
- **CREATIVE**
- **INDUSTRIOUS**
- **POSITIVE**

# Mayo - People



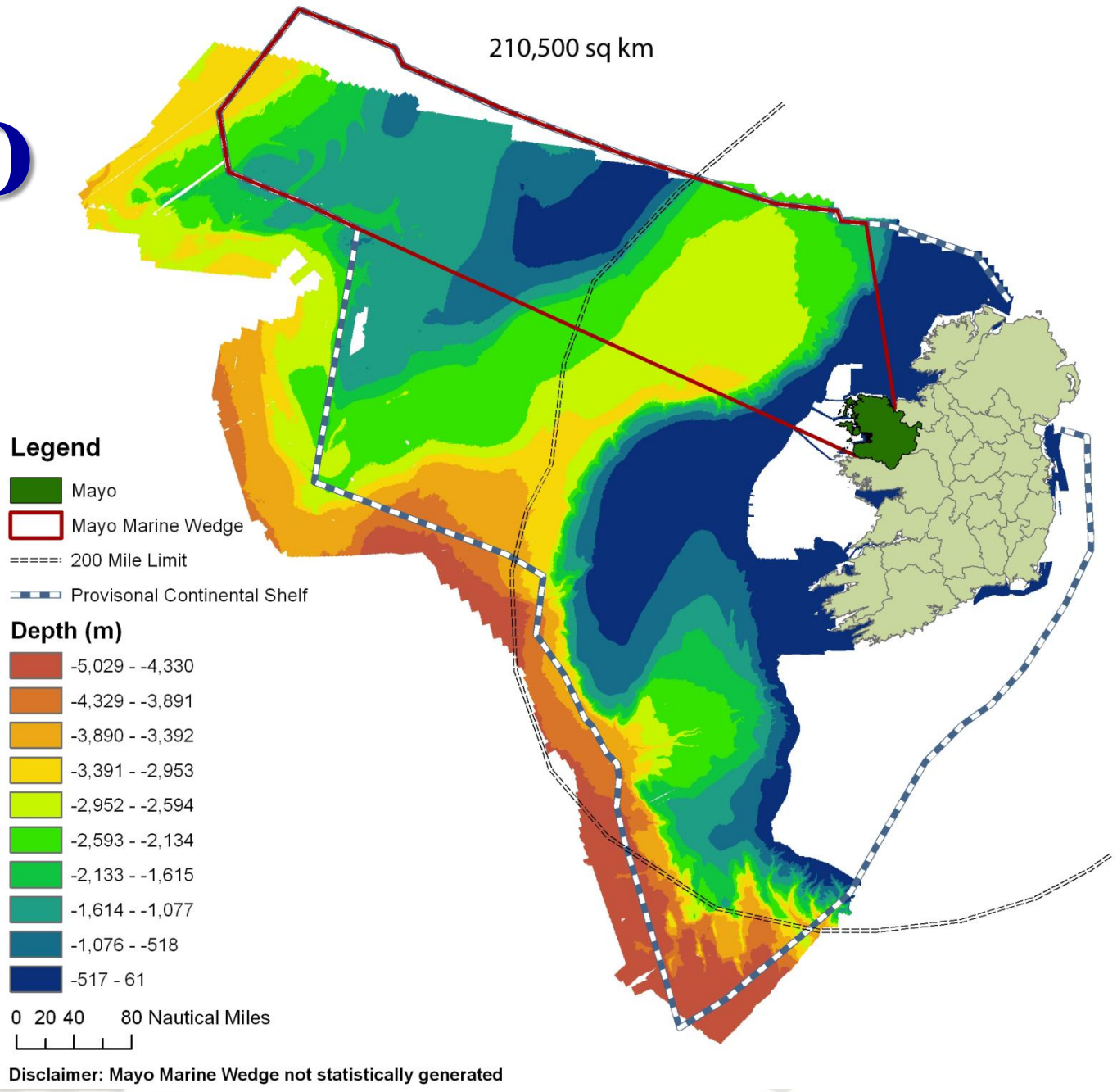
**MANY PARTS**

## Our Diaspora

Ireland ... 70,000,000  
Mayo ..... 3,500,000

# MAYO

# Sea





**MANY PARTS**

**We are very good at a lot  
of things.....**



INVEST

# Quality of Life



**MANY PARTS**



INVEST



“ Heartbeat of the Wild Atlantic Way ... “



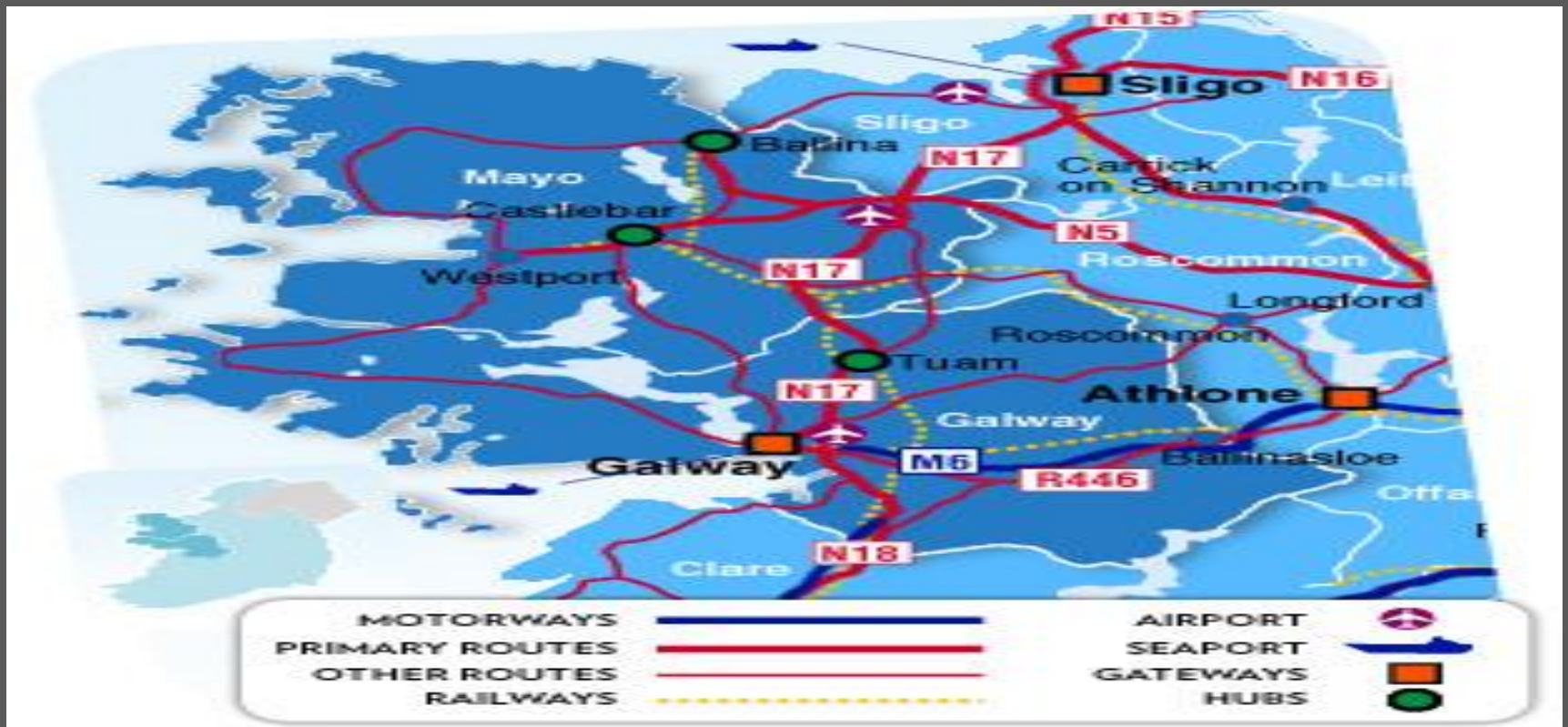


Making ...



INVEST

# West Region



# Atlantic Corridor Road Project





**Gort - Tuam**



# Ballaghaderreen By Pass



# Ballaghaderreen

# Ballaghaderreen By Pass

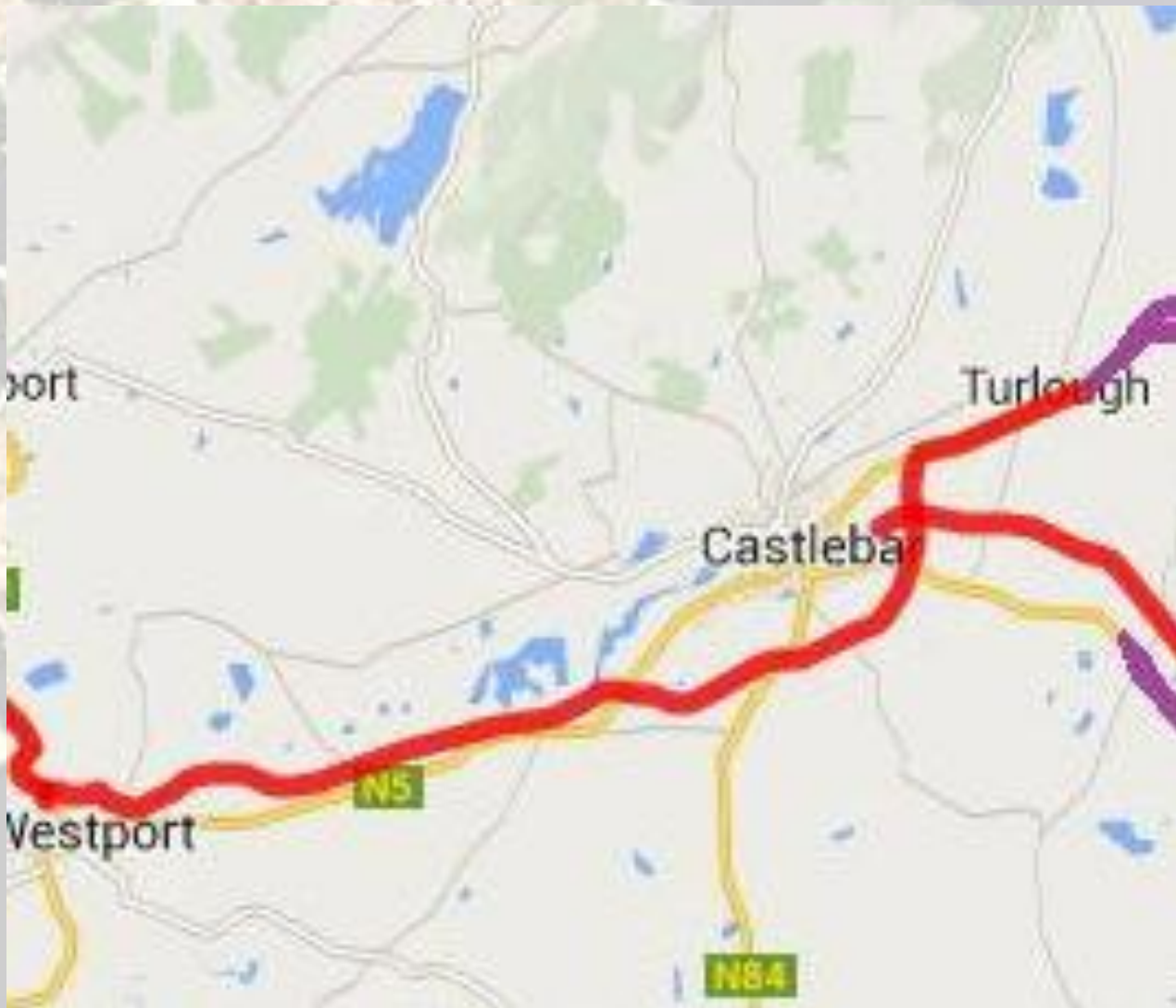


N5



ough Gara

5



# N5 Castlebar - Westport



# Tourism



**MANY PARTS**



INVEST

MAYO



# MAYO



*the Adventure Capital*

## the Adventure Capital

Walking - Cycling - Water based Activities

Golf - Equestrian - Wild Atlantic Way - Fishing - Sailing - Visitor Centres



Cycling



WILD ATLANTIC WAY

MAYO



Walking & Cycling in the West of Ireland

WILD ATLANTIC WAY



Walking



Activities



MAYO the Adventure Capital

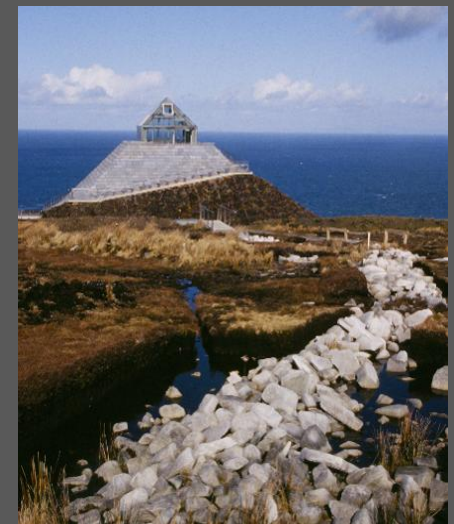
Walking - Cycling - Water based Activities

MAYO the Adventure Capital

Walking - Cycling - Water based Activities

INVEST

# Tourism



# Tourism

Over Seas Visitors .... 245,000

Domestic Visitors ..... 373,000

Accommodation Providers .. 194

Hotel / B&B Bed nights ... 7700+

Average Stay ... 4 nights



**MANY PARTS**



The tourism and hospitality industry employs an estimated 185,000 people nationally and of these about 4,500 are in Co Mayo

# THE ROUTE

From its northernmost point in Donegal to its southernmost in Cork, the Wild Atlantic Way offers one of the world's most diverse and spectacular coastlines. Immerse yourself in the culture, music and food found in the towns and villages along the way, climb the most breathtaking heights and experience a landscape that revives the soul.

2500 KM

160 DISCOVERY POINTS

15 SIGNATURE DISCOVERY POINTS

26 ISLANDS TO DISCOVER

150 HIDDEN GEMS



# Wild Atlantic Way

# Discovery Points



Inisturk



# Discovery Points



Downpatrick Head

# Discovery Points



**Downpatrick Head**



“ Heartbeat of the Wild Atlantic Way ... “





**Kilbride - N59**



**MANY PARTS**

# **FUTURE**

- **SUSTAINABLE**
- **INCLUSIVE**
- **PROSPEROUS**
- **PROUD**



**MANY PARTS**

# **THANKS**

- **NRA**
- **Mayo**
- **Delegates**
- **Minister**

**Enjoy ...**

A scenic landscape at dusk or dawn. The foreground is dark, with silhouettes of trees and a winding path leading towards a body of water. In the middle ground, there's a small building and a hill. The background shows a range of mountains under a cloudy sky with some light breaking through. The overall mood is serene and contemplative.

**Go raibh maith agaibh !**